

MINIVALVES, MECHANICALLY AND HAND OPERATED SERIES VME

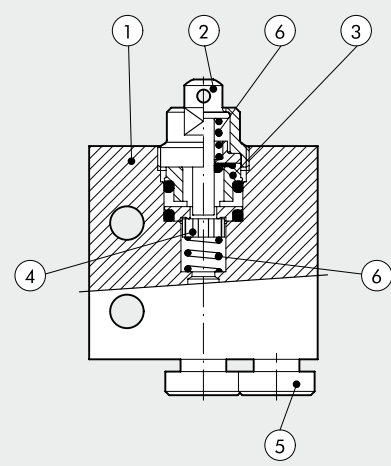
- Minivalves with 3/2 NO NC poppet,
- Installation in any position
- Push-in fittings for pipe Ø 4 mm (Ø 5/32) and M5 on the valve body
- Low actuation force
- Rapid, accurate signal
- Mechanical actuation
- The 2 places adapter allows manual actuation of 1 or 2 VME valves with manual Ø 22 mm panel actuators. Thus it is possible to obtain 3/2, 5/2, 5/3 open centre and 5/3 pressure centre pneumatic functions.
- On request, it is possible to place a NC-NO electric switch next to VME valve for mixed solenoid/pneumatic signals.



TECHNICAL DATA	
Valve fitting port	Push-in fitting for pipe Ø 4 (Ø 5/32) and M5 (axial or side)
Fluid	Filtered air without lubrication; lubrication, if used, must be continuous
Type	With poppet
Versions	Mechanical and manual
Operators:	With Plunger – Plunger for wall-mounting – Roller lever – Unidirectional roller lever
• mechanical	Depending on the type of actuation panel selected
• manual	
Operating pressure	psi 7.25 to 145
Operating temperature range	°F 14 to +140
Nominal diameter	in 0.1
Conductance C	scfm/psi 16.5
Critical ratio b	psi/psi 0.03
Flow rate at 6 bar (0.6 MPa - 87 psi) ΔP 0.5 bar (0.05 MPa - 7.25 psi)	scfm 35
Flow rate at 6 bar (0.6 MPa - 87 psi) ΔP 1 bar (0.1 MPa - 14.5 psi)	scfm 60
Actuation force – Plunger at 6 bar (0.6 MPa - 87 psi)	N 8
Recommended lubricant	ISO and UNI FD22
Installation	In any position
Compatibility with oils	Please refer to page 5-4 of the technical documentation

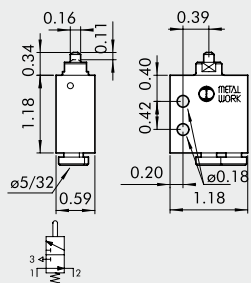
COMPONENTS

- ① VALVE BODY: Aluminium
- ② BUTTON: chemically nickel-plated brass
- ③ DISTANCE PLATES: Brass
- ④ GASKETS: NBR
- ⑤ PUSH-IN FITTING CARTRIDGES: stainless steel, brass and plastic
- ⑥ SPRINGS: stainless steel

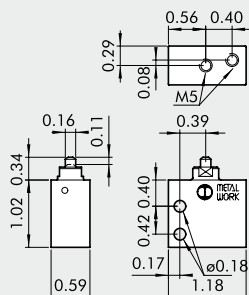


PLUNGER 3/2 NO - AXIAL FITTINGS

Ø 4



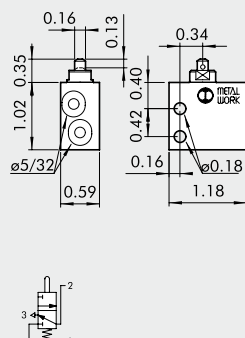
M5



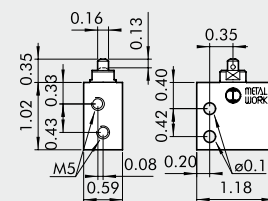
Code	Description	Weight [lb]
W3501000101	VME1-10 NO Ø 4 (Ø 5/32)	0.090
W3501000110	VME1-16 NO M5	0.080

PLUNGER 3/2 NO - SIDE FITTINGS

Ø 4



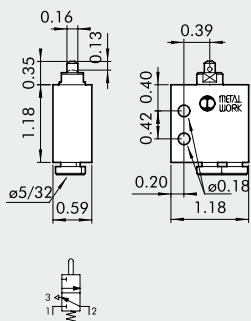
M5



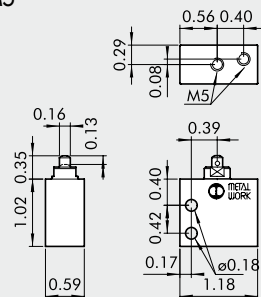
Code	Description	Weight [lb]
W3501001100	VME2-10 NO Ø 4 (Ø 5/32)	0.074
W3501001110	VME2-10 NO M5	0.074

PLUNGER 3/2 NC - AXIAL FITTINGS

Ø 4



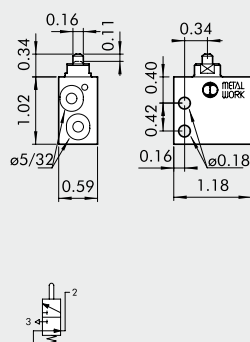
M5



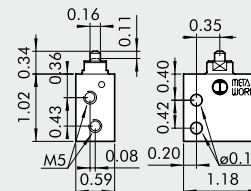
Code	Description	Weight [lb]
W3501000100	VME1-01 NC Ø 4 (Ø 5/32)	0.090
W3501000111	VME1-11 NC M5	0.080

PLUNGER 3/2 NC - SIDE FITTINGS

Ø 4



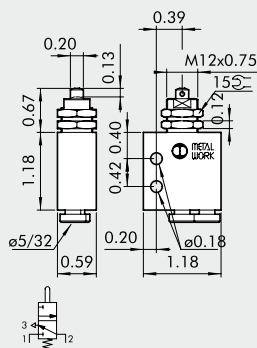
M5



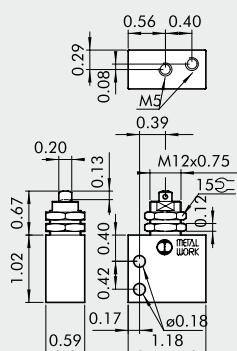
Code	Description	Weight [lb]
W3501001101	VME2-01 NC Ø 4 (Ø 5/32)	0.074
W3501001111	VME2-11 NC M5	0.074

PLUNGER FOR WALL MOUNTING, 3/2 NC - AXIAL FITTINGS

Ø 4



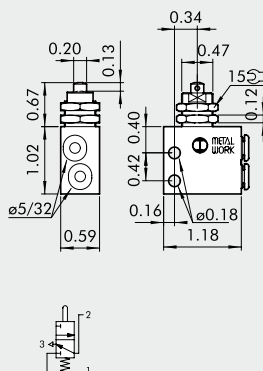
M5



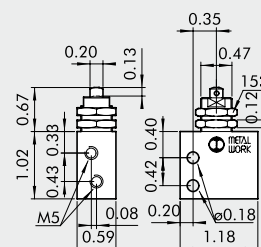
Code	Description	Weight [lb]
W3501000400	VME1-04 NC Ø 4 (Ø 5/32)	0.120
W3501000411	VME1-14 NC M5	0.105

PLUNGER FOR WALL MOUNTING, 3/2 NC - SIDE FITTINGS

Ø 4

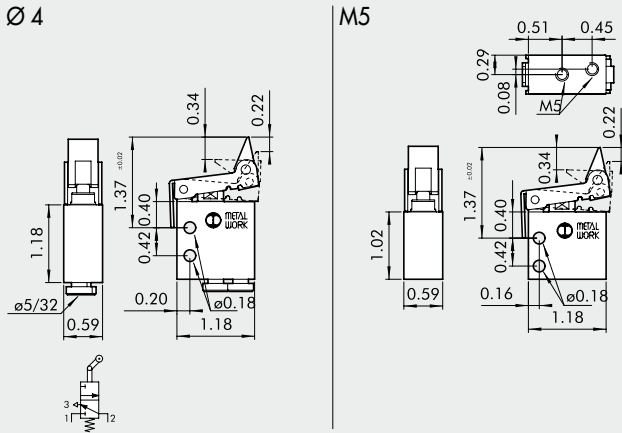


M5



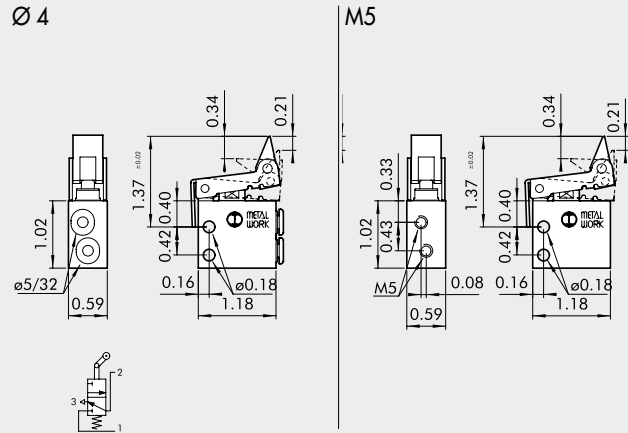
Code	Description	Weight [lb]
W3501001401	VME2-04 NC Ø 4 (Ø 5/32)	0.101
W3501001411	VME2-14 NC M5	0.101

UNIDIRECTIONAL ROLLER LEVER, 3/2 NC - AXIAL FITTINGS



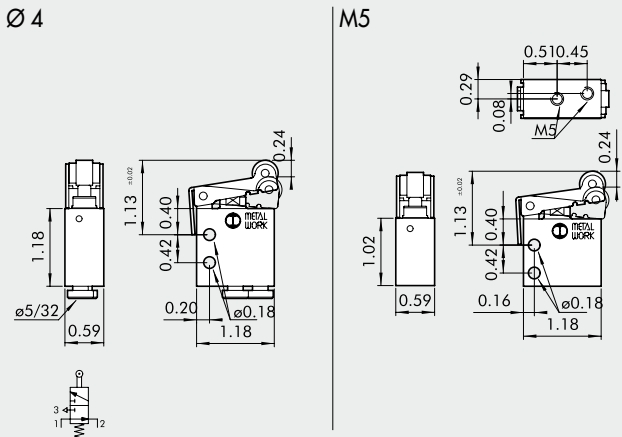
Code	Description	Weight [lb]
W3501000300	VME1-03 NC Ø 4 (Ø 5/32)	0.132
W3501000311	VME1-13 NC M5	0.119

UNIDIRECTIONAL ROLLER LEVER, 3/2 NC - SIDE FITTINGS



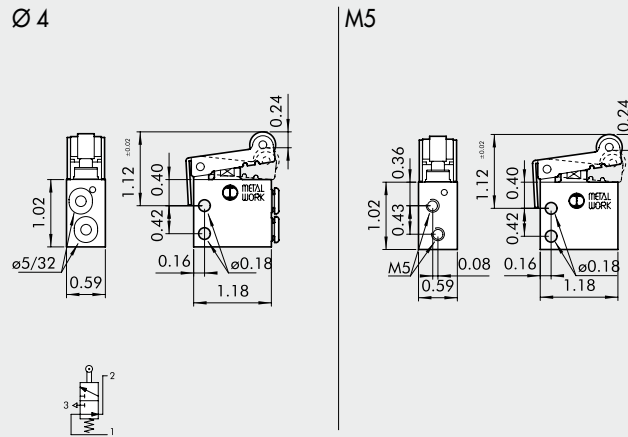
Code	Description	Weight [lb]
W3501001301	VME2-03 NC Ø 4 (Ø 5/32)	0.114
W3501001311	VME2-13 NC M5	0.114

ROLLER LEVER, 3/2 NO - AXIAL FITTINGS



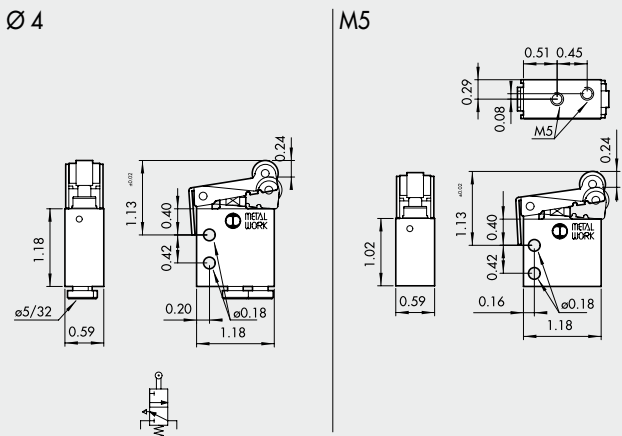
Code	Description	Weight [lb]
W3501000201	VME1-05 NO Ø 4 (Ø 5/32)	0.127
W3501000210	VME1-15 NO M5	0.114

ROLLER LEVER, 3/2 NO - SIDE FITTINGS



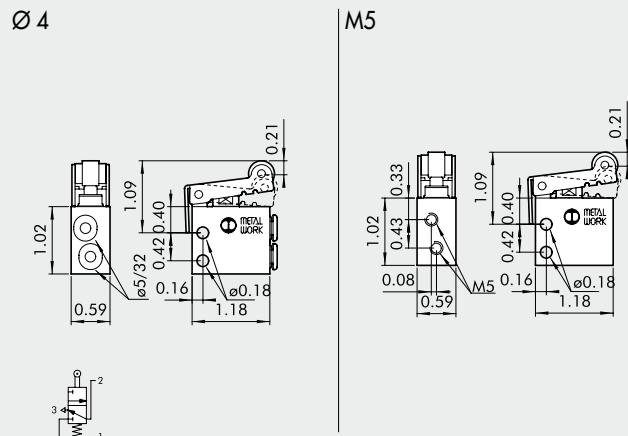
Code	Description	Weight [lb]
W3501001200	VME2-05 NO Ø 4 (Ø 5/32)	0.110
W3501001210	VME2-15 NO M5	0.110

ROLLER LEVER, 3/2 NC - AXIAL FITTINGS



Code	Description	Weight [lb]
W3501000200	VME1-02 NC Ø 4 (Ø 5/32)	0.123
W3501000211	VME1-12 NC M5	0.110

ROLLER LEVER, 3/2 NC - SIDE FITTINGS

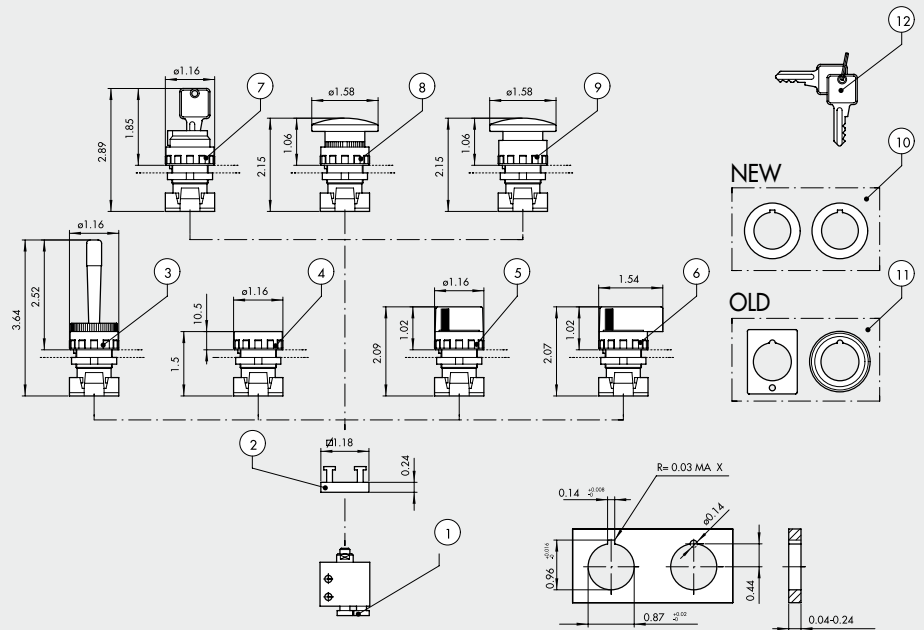


Code	Description	Weight [lb]
W3501001201	VME2-02 NC Ø 4 (Ø 5/32)	0.114
W3501001211	VME2-12 NC M5	0.110

MANUAL VME VALVES – ASSEMBLY DIAGRAM

NOTES:

- For 5/2 pneumatic operation, assemble a 3/2 NC plunger valve and a 3/2 NO one on the adapter.
- For 5/3 pneumatic operation with open centres, assemble two 3/2 NC plunger valves on the adapter.
- For 5/3 pneumatic operation with pressure centres, assemble two 3/2 NO plunger valves on the adapter.



ORDERING CODES

Symbol	Reference	Code	Description	Weight [lb]
	①	W3501000100	3/2 NC Axial fittings Ø 4 (Ø 5/32)	0.080
		W3501000111	3/2 NC Axial fittings M5	0.080
		W3501000101	3/2 NC Side fittings Ø 4 (Ø 5/32)	0.074
		W3501000111	3/2 NC Side fittings M5	0.074
	①	W3501000101	3/2 NO Axial fittings Ø 4 (Ø 5/32)	0.074
		W3501000110	3/2 NO Axial fittings M5	0.074
		W3501000100	3/2 NO Side fittings Ø 4 (Ø 5/32)	0.074
		W3501000110	3/2 NO Side fittings M5	0.074
	②	0351000050	2 places adaptor thickness 6.8 mm	0.011
	③	W0351000015	Red handler with horizontally pivoted lever	0.055
	④	W0351000011	Fat push button + 2 red/black coloured disks ◆ Bistable fat push button without disk	0.033
	⑤	W0351000030	Black selector short lever at 2 positions with return	0.044
		W0351000031	Black selector short lever at 2 positions	0.044
	⑤	W0351000032	Black selector short lever at 3 positions with return	0.044
		W0351000033	Black selector short lever at 3 positions	0.044
	⑥	W0351000034	Black selector long lever at 2 positions with return	0.057
		W0351000035	Black selector long lever at 2 positions	0.057
	⑥	W0351000036	Black selector long lever at 3 positions with return	0.057
		W0351000037	Black selector long lever at 3 positions	0.057
	⑦	W0351000016	2 positions key selector with extractable key in 2 positions	0.110
		W0351000018	2 positions key selector with extractable key in 0	0.110
	⑧	W0351000013	Red mushroom-head push button Ø 40 mm	0.059
		W0351000017	Black mushroom-head push button Ø 40 mm	0.059
	⑨	W0351000014	Red mushroom-head push button with lock Ø 40 mm	0.063
◆ It can't be supplied. As working replaced by selector with bistable short lever at 2 positions ⑤.	⑩	W0351000049	✦ Reducer from 30 to 22.5 mm	
✦ Usable only with technopolymer body selectors.	⑪	W0351000050	▲ Adapter for bore Ø 30 mm G2326	
▲ Usable only with metal body selectors.	⑫	W0351000021	✦ Key for ESC selectors	
		W0351000056	Green disk for push button ④	