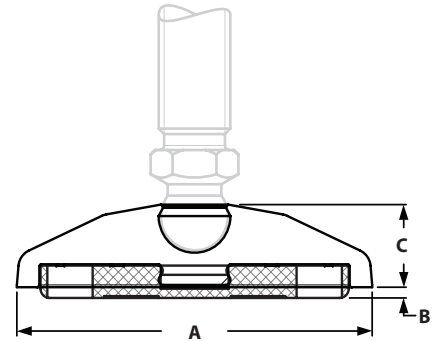


TSLOTS Hardware

BASE FOR SWIVEL FEET WITH ANTI-SLIP



- A swiveling leveling foot for stable positioning on uneven floors
- Fiberglass reinforced nylon or stainless steel

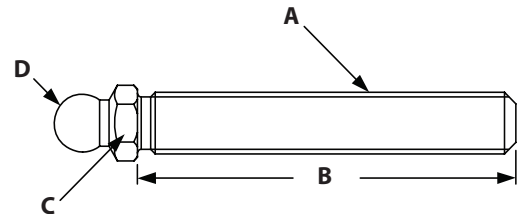


ITEM#	MATERIAL	A	B	C	LOAD CAPACITY
671386	Nylon	29mm	2mm	18mm	500 lbs
671384	Stainless Steel	29mm	2mm	18mm	2000 lbs
671392	Nylon	39mm	2mm	18mm	900 lbs
671390	Stainless Steel	39mm	2mm	18mm	3000 lbs
671398	Nylon	44mm	2mm	18mm	900 lbs
671396	Stainless Steel	44mm	2mm	18mm	3000 lbs
671410	Nylon	59mm	2mm	18mm	900 lbs
671408	Stainless Steel	59mm	2mm	18mm	3500 lbs
671425	Nylon	79mm	2mm	18mm	900 lbs
671418	Stainless Steel	79mm	2mm	18mm	3500 lbs

THREADED ROD FOR SWIVEL FEET



- Threaded Rod for swiveling feet
- Zinc plated steel
- Swiveling range 20°

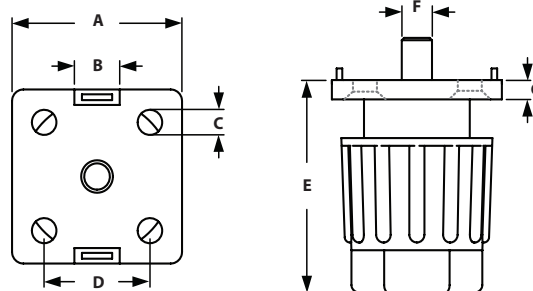


ITEM#	MATERIAL	A	B	C	D	LOAD CAPACITY
671461	Steel	M8	40mm	14mm	15mm	350 lbs
671475	Steel	M12	45mm	14mm	15mm	770 lbs
671479	Steel	M12	100mm	14mm	15mm	770 lbs
671493	Steel	M16	66mm	17mm	15mm	1450 lbs
671495	Steel	M16	100mm	17mm	15mm	1450 lbs
671499	Steel	M16	150mm	17mm	15mm	1450 lbs

ADJUSTABLE LEVELING FOOT



- Easy height adjustable leveling foot fastening to aluminum profiles
- Housing: Fiberglass reinforced nylon
- Mechanism: Zinc plated steel

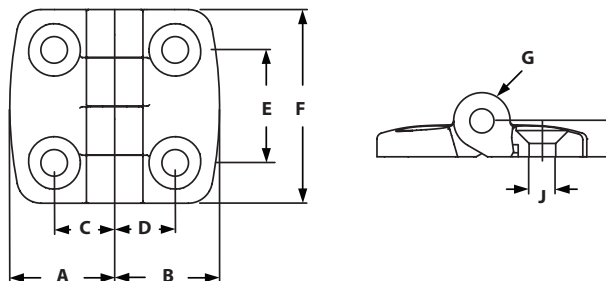


ITEM#	A	B	C	D	E	F-THREAD	G	LOAD CAPACITY
671596	30mm	8mm	4.3mm	20.5mm	35-50mm	M8	5mm	330 lbs
671597	40mm	10mm	6.5mm	28mm	45-65mm	M8	5mm	332 lbs
671598	45mm	10mm	6.3mm	28mm	45-65mm	M8	5mm	335 lbs
671599	50mm	10mm	6.3mm	28mm	45-65mm	M8	5mm	337 lbs

PLASTIC COMBI HINGES



- Hinges to panels or extrusion



ITEM#	SERIES	DESCRIPTION	A	B	C	D	E	F	G	H	J
671247	30	30/30	29.5mm	29.5mm	17.5mm	17.5mm	28mm	48mm	14mm	9mm	6.6mm
671250	30	30/40	29.5mm	38.5mm	17.5mm	22.5mm	28mm	48mm	14mm	9mm	6.6mm
671253	30	30/45	29.5mm	43.5mm	17.5mm	25mm	28mm	48mm	14mm	9mm	6.6mm
671256	30	30/50	29.5mm	48.5mm	17.5mm	27.5mm	28mm	48mm	14mm	9mm	6.6mm
671259	30	30/60	29.5mm	57.5mm	17.5mm	32.5mm	28mm	48mm	14mm	9mm	6.6mm
671274	45	45/45	43.5mm	43.5mm	25mm	25mm	28mm	48mm	14mm	9mm	6.6mm
671277	45	45/50	43.5mm	48.5mm	25mm	27.5mm	28mm	48mm	14mm	9mm	6.6mm
671280	45	45/60	43.5mm	57.5mm	25mm	32.5mm	28mm	48mm	14mm	9mm	6.6mm
671289	60	60/60	57.5mm	57.5mm	32.5mm	32.5mm	28mm	48mm	14mm	9mm	6.6mm

RECOMMENDED FASTENERS (TO EXTRUSION SLOT)

ITEM#	SERIES	QTY	DESCRIPTION
651739	30	4	M6 x 14mm FHSCS & M6 Hammer Nut
651740	45	4	M6 x 18mm FHSCS & M6 Hammer Nut

RECOMMENDED FASTENERS (TO PANEL)

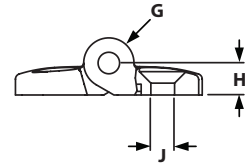
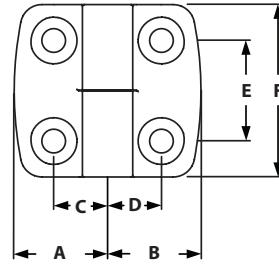
ITEM#	SERIES	QTY	BOLT	HEX NUT	WASHER
651741	30/45	4	M6 x 20mm FHSCS	Yes	Yes

TSLOTS Hardware

PLASTIC COMBI LIFT OFF HINGES



◦ Connects to panels or extrusion



ITEM#	SERIES	DESCRIPTION	LIFT OFF	A	B	C	D	E	F	G	H	J
671248	30	30/30	Left Hand	29.5mm	29.5mm	17.5mm	17.5mm	28mm	48mm	14mm	9mm	6.6mm
671251	30	30/40	Left Hand	29.5mm	38.5mm	17.5mm	22.5mm	28mm	48mm	14mm	9mm	6.6mm
671254	30	30/45	Left Hand	29.5mm	43.5mm	17.5mm	25mm	28mm	48mm	14mm	9mm	6.6mm
671257	30	30/50	Left Hand	29.5mm	48.5mm	17.5mm	27.5mm	28mm	48mm	14mm	9mm	6.6mm
671260	30	30/60	Left Hand	29.5mm	57.5mm	17.5mm	32.5mm	28mm	48mm	14mm	9mm	6.6mm
671249	30	30/30	Right Hand	29.5mm	29.5mm	17.5mm	17.5mm	28mm	48mm	14mm	9mm	6.6mm
671252	30	30/40	Right Hand	29.5mm	38.5mm	17.5mm	22.5mm	28mm	48mm	14mm	9mm	6.6mm
671255	30	30/45	Right Hand	29.5mm	43.5mm	17.5mm	25mm	28mm	48mm	14mm	9mm	6.6mm
671258	30	30/50	Right Hand	29.5mm	48.5mm	17.5mm	27.5mm	28mm	48mm	14mm	9mm	6.6mm
671261	30	30/60	Right Hand	29.5mm	57.5mm	17.5mm	32.5mm	28mm	48mm	14mm	9mm	6.6mm
671275	45	45/45	Left Hand	43.5mm	43.5mm	25mm	25mm	28mm	48mm	14mm	9mm	6.6mm
671278	45	45/50	Left Hand	43.5mm	48.5mm	25mm	27.5mm	28mm	48mm	14mm	9mm	6.6mm
671281	45	45/60	Left Hand	43.5mm	57.5mm	25mm	32.5mm	28mm	48mm	14mm	9mm	6.6mm
671276	45	45/45	Right Hand	43.5mm	43.5mm	25mm	25mm	28mm	48mm	14mm	9mm	6.6mm
671279	45	45/50	Right Hand	43.5mm	48.5mm	25mm	27.5mm	28mm	48mm	14mm	9mm	6.6mm
671282	45	45/60	Right Hand	43.5mm	57.5mm	25mm	32.5mm	28mm	48mm	14mm	9mm	6.6mm

RECOMMENDED FASTENERS (TO EXTRUSION SLOT)

ITEM#	SERIES	QTY	DESCRIPTION
651789	30	4	M6 x 12mm FHSCS & Hammer Nut
651790	45	4	M6 x 12mm FHSCS & Hammer Nut

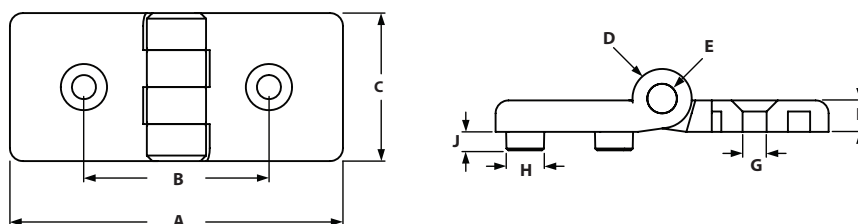
RECOMMENDED FASTENERS (TO PANEL)

ITEM#	SERIES	QTY	BOLT	HEX NUT	WASHER
651741	30/45	4	M6 x 20mm FHSCS	Yes	Yes

HEAVY DUTY PLASTIC HINGE



- Connects to panels or extrusion
- Each plate has two holes to fit locating pins



ITEM#	SERIES	A	B	C	D	E	F	G	H-SLOT	J
671050	45	90mm	50mm	40mm	16mm	8mm	9mm	6.5mm	10	5mm

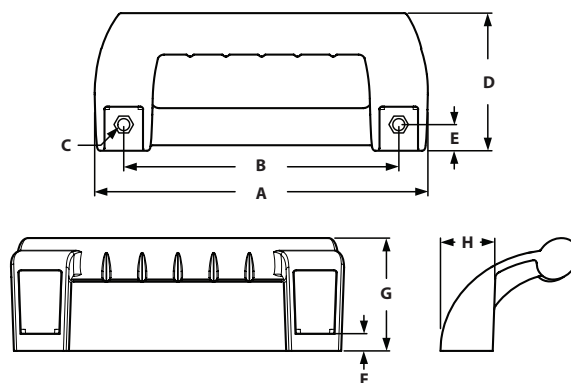
RECOMMENDED FASTENERS

ITEM#	SERIES	QTY	DESCRIPTION
651742	45	2	M6 x 20mm FHSCS & M6 Hammer Nut

MACHINE HANDLE



- Large machine handle with ergonomic design and finger protection
- Mounts on doors, flaps, and extrusion
- Cover caps are included



ITEM#	SERIES	A	B	C	D	E	F	G	H
671017	45	240mm	200mm	8.8mm	100mm	19mm	12.5mm	80mm	38mm

RECOMMENDED FASTENERS

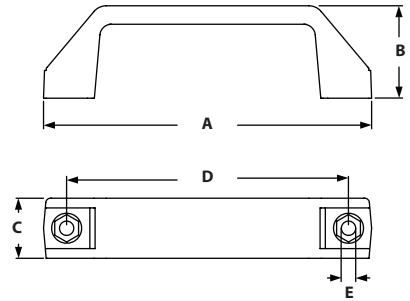
ITEM#	SERIES	QTY	DESCRIPTION
651743	45	2	M8 x 16mm SHCS & M8 Hammer Nut

TSLOTS Hardware

BRIDGE HANDLE



◦ Mounts on doors, flaps, and extrusion



ITEM#	SERIES	A	B	C	D	E
671015	30/45	142mm	40mm	26mm	122mm	6.2mm
671016	30/45	170mm	52mm	28mm	152mm	6.2mm

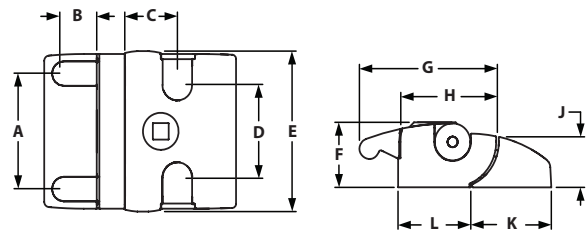
RECOMMENDED FASTENERS

ITEM#	SERIES	HANDLE	QTY	DESCRIPTION
651744	30	671015 & 671016	2	M6 x 14mm SHCS & M6 Hammer Nut
651745	45	671015	2	M6 x 16mm SHCS & M6 Hammer Nut
651746	45	671016	2	M6 x 18mm SHCS & M6 Hammer Nut

SLAM LATCH



◦ Surface: Black powder coat
 ◦ Material: Die-cast zinc
 ◦ Ideal for cabinets and guarding



ITEM#	LOCK	A	B	C	D	E	F	G	H	J	K	L
671072	Universal	56mm	16.9mm	26.4mm	45mm	75mm	31.5mm	69mm	47.9mm	24.4mm	40mm	36.5mm
671073	Unique	56mm	16.9mm	26.4mm	45mm	75mm	31.5mm	69mm	47.9mm	24.4mm	40mm	36.5mm
671074	Without	56mm	16.9mm	26.4mm	45mm	75mm	31.5mm	69mm	47.9mm	24.4mm	40mm	36.5mm

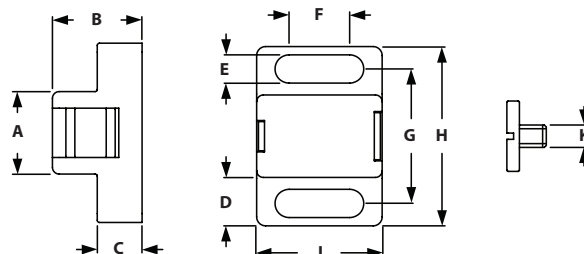
RECOMMENDED FASTENERS

ITEM#	SERIES	QTY	DESCRIPTION
651791	45	4	M6 x 14mm SHCS & Hammer Nut

MAGNETIC CATCH



- A quick locking device for doors, adaptable to the thickness of the panel units
- Fiberglass reinforced nylon



ITEM#	SERIES	A	B	C	D	E	F	G	H	J	K
671031	30/45	19mm	20mm	10mm	10.5mm	6.3mm	13.5mm	30mm	40mm	28mm	M5

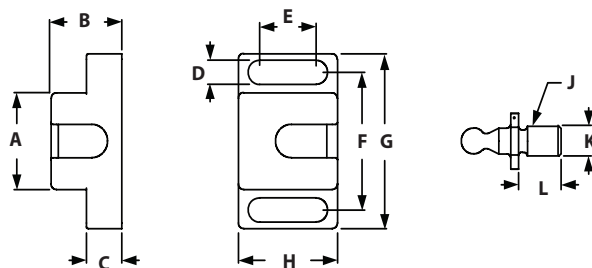
RECOMMENDED FASTENERS

ITEM#	SERIES	QTY	DESCRIPTION
651747	30	2	M6 x 16mm BHSCS & M6 Hammer Nut
651748	45	2	M6 x 18mm BHSCS & M6 Hammer Nut

BALL CATCH



- A quick locking device for doors, adaptable to the thickness of the panel units
- Fiberglass reinforced nylon



ITEM#	SERIES	A	B	C	D	E	F	G	H	J	K	L
671032	30/45	26mm	20mm	10mm	6.5mm	16mm	37mm	47mm	28mm	M8	M8	12mm

RECOMMENDED FASTENERS

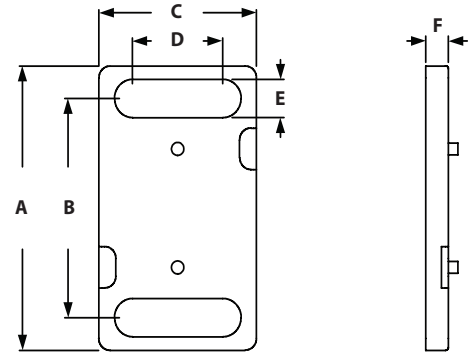
ITEM#	SERIES	QTY	DESCRIPTION
651747	30	2	M6 x 16mm BHSCS & M6 Hammer Nut
651748	45	2	M6 x 18mm BHSCS & M6 Hammer Nut

TSLOTS Hardware

SPACER FOR BALL CATCH



◦ To increase the distance to the extrusion profile from the Ball Catch



ITEM#	MATERIAL	A	B	C	D	E	F
671086	Black Nylon	48mm	37mm	28mm	16mm	6.5mm	4mm

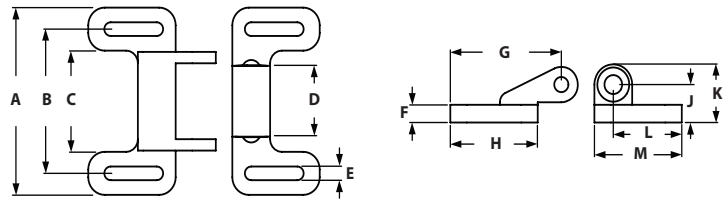
RECOMMENDED FASTENERS

ITEM#	SERIES	QTY	DESCRIPTION
651749	30	2	M6 x 20mm BHSCS & M6 Hammer Nut

DOUBLE BALL CATCH



◦ A quick locking device for doors and flaps with and without border
 ◦ Fiberglass reinforced nylon



ITEM#	SERIES	A	B	C	D	E	F	G	H	J	K	L	M
671075	30/45	74mm	57mm	40mm	28mm	5.4mm	7mm	47mm	37mm	15mm	23mm	29mm	37mm

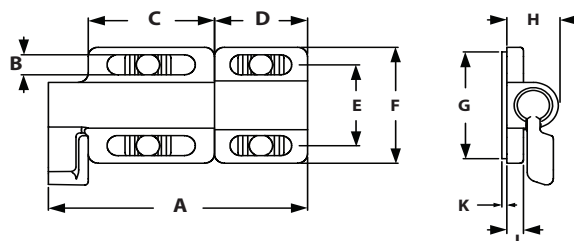
RECOMMENDED FASTENERS

ITEM#	SERIES	QTY	DESCRIPTION
651750	30	4	M5 x 14mm BHSCS & M5 Hammer Nut
651751	45	4	M5 x 16mm BHSCS & M5 Hammer Nut

DOOR LATCH



- For easy closing of doors and flaps, with spring-loaded clamp
- Including separate slot fixation strips
- Die-cast zinc



ITEM#	SERIES	A	B	C	D	E	F	G	H	J	K
671033	30/45	78mm	6.6mm	38mm	28mm	26.5mm	38mm	35mm	16mm	5mm	1.5mm

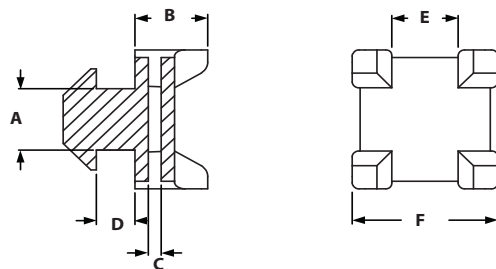
RECOMMENDED FASTENERS

ITEM#	SERIES	QTY	DESCRIPTION
651706	30	4	M6 x 12mm BHSCS & M6 Hammer Nut
651753	45	4	M6 x 16mm BHSCS & M6 Hammer Nut

CROSS CABLE BINDING BLOCK



- To secure cables to extrusion in two directions
- Can be mounted into the slot by a quarter turn
- Fiberglass reinforced nylon

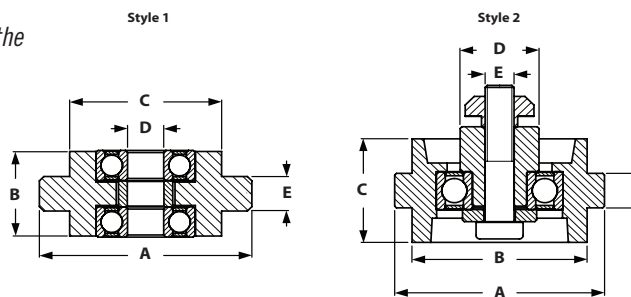


ITEM#	SERIES	A	B	C	D	E	F
671639	30	8mm	11mm	2mm	2mm	10mm	22mm
671041	45	10mm	11mm	2mm	5.8mm	10mm	22mm

ROLLERS



- To guide moving parts in the slot of the extrusion
- Fiberglass reinforced nylon



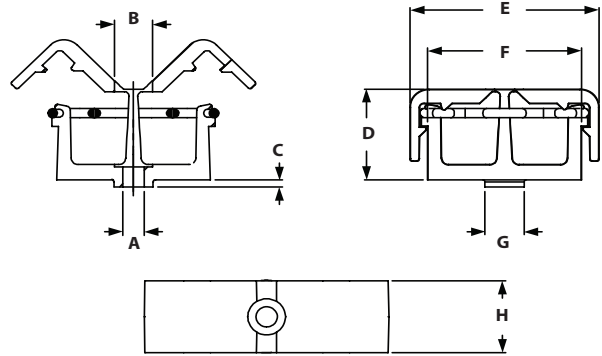
ITEM#	SERIES	STYLE	A	B	C	D	E	F
671027	30	1	39mm	17.6mm	25.8mm	6mm	8mm	N/A
671028	45	1	39mm	17.6mm	25.8mm	6mm	10mm	N/A
671029	45	1	47mm	19.6mm	33.6mm	8mm	10mm	N/A
671030	45	2	58mm	48.4mm	30mm	21.8mm	M8	10mm

TSLOTS Hardware

CLIP CABLE BINDER



- To fix cables without the need of cable ties, can be opened and closed again.
- Fiberglass reinforced nylon



ITEM#	SERIES	A	B	C	D	E	F	G	H
671089	30	4.5mm	8mm	2.5mm	20mm	40mm	32.6mm	8mm	16mm
671090	45	4.5mm	8mm	2.5mm	20mm	40mm	32.6mm	10mm	16mm

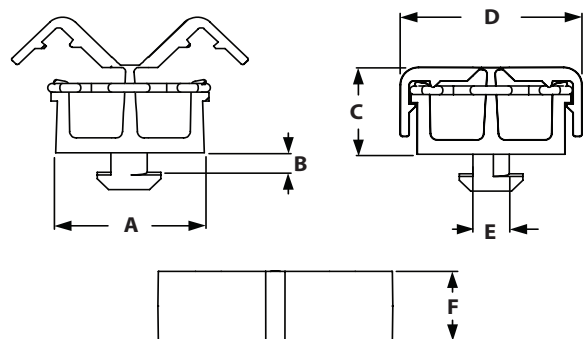
RECOMMENDED FASTENERS

ITEM#	SERIES	QTY	DESCRIPTION
651754	30	1	M4 x 8mm SHCS & M4 Hammer Nut
651755	45	1	M4 x 12mm SHCS & M4 Hammer Nut

CLIP CABLE BINDER WITH HAMMER



- To fix cables without the need of cable ties, can be opened and closed again.
- Fiberglass reinforced nylon

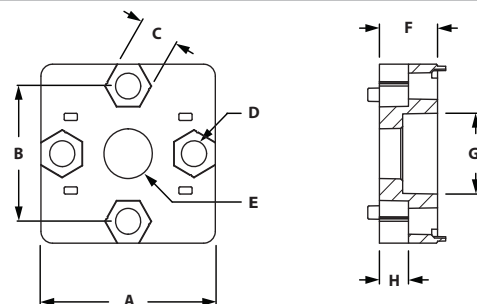


ITEM#	SERIES	A	B	C	D	E	F
671092	30	32.6mm	2mm	20mm	40mm	8mm	16mm
671091	45	32.6mm	5.9mm	20mm	40mm	10mm	16mm

PLATE CONNECTOR



- Connects two extrusions to form a tee connection
- Connecting hardware included



ITEM#	FINISH	SERIES	A	B	C	D	E	F	G	H
683584	Alu Color	30	30mm	21mm	8mm	5.5mm	8.5mm	15mm	13.6mm	7.5mm
683587	Alu Color	40	40mm	29.6mm	10mm	6.2mm	12.4mm	15mm	20mm	7.5mm

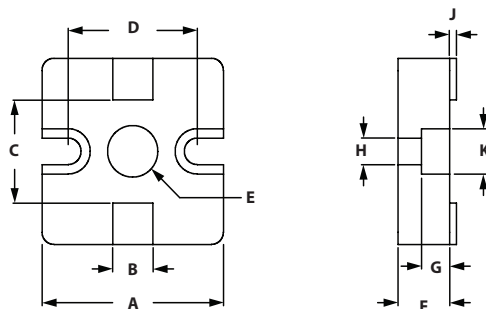
INCLUDED FASTENERS

SERIES	CONNECTING SCREW	FASTENING SCREWS	TNUT
30	M8 x 30mm	M5 x 16mm SHCS	M5 Hammer Nuts
40	S12 x 30mm Torx T50	M6 x 20mm SHCS	M6 Hammer Nuts

PLATE CONNECTOR 45



- Connects two extrusions to form a tee connection
- No machining necessary with Self-Tapping screws



ITEM#	FINISH	SERIES	A	B	C	D	E	F	G	H	J	K
671765	Plain	45	45mm	10mm	25mm	32mm	12.5mm	13mm	7mm	6.5mm	1.7mm	11mm
671766	Alu color	45	45mm	10mm	25mm	32mm	12.5mm	13mm	7mm	6.5mm	1.7mm	11mm

INCLUDED FASTENERS

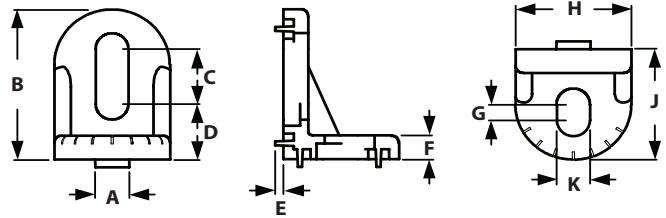
ITEM#	SERIES	QTY	DESCRIPTION
651756	45	1	S12 x 30mm LHSCS & M6 x 18mm SHCS & Hammer Nut

TSLOTS Hardware

TURNING ANGLE 30



◦ Connects to extrusion at various angles from 0° to 180°
 ◦ Die-cast aluminum



ITEM#	SERIES	A	B	C	D	E	F	G	H	J	K
671234	30/45	8mm	38mm	14mm	14mm	2mm	6mm	4mm	28mm	28mm	8mm

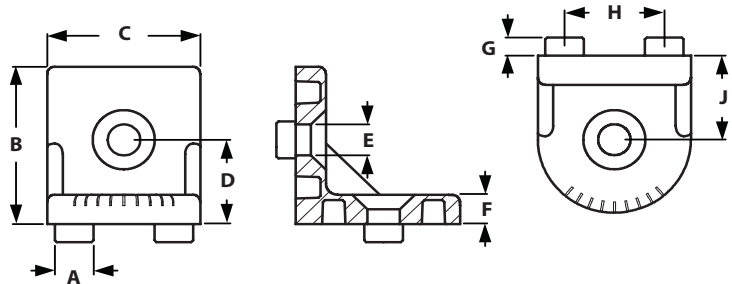
RECOMMENDED FASTENERS

ITEM#	SERIES	QTY	DESCRIPTION
651757	30	2	M8 x 12mm BHSCS & M8 Self-Aligning Tnut
651707	45	2	M8 x 16mm BHSCS & M8 Hammer Nut

TURNING ANGLE 45



◦ Connects to extrusion at various angles from 0° to 180°
 ◦ Die-cast aluminum



ITEM#	SERIES	A	B	C	D	E	F	G	H	J
671235	45	10mm	43mm	40mm	23mm	8.5mm	8mm	5mm	26mm	23mm

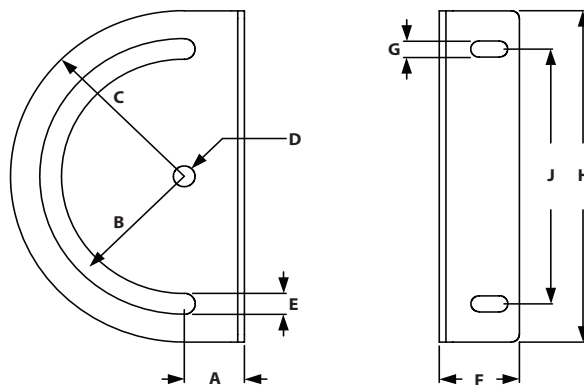
RECOMMENDED FASTENERS

ITEM#	SERIES	QTY	DESCRIPTION
651792	45	2	M8 x 18mm FHSCS & Hammer Nut

PIVOT ANGLE 130



- Connects to extrusion at an adjustable angle
- Zinc plated



ITEM#	SERIES	A	B	C	D	E	F	G	H	J
671233	45	22.5mm	R50	R65	8.1mm	8.2mm	30mm	6.3mm	130mm	100mm

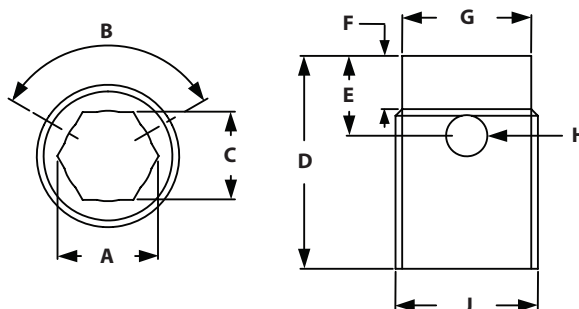
RECOMMENDED FASTENERS

ITEM#	SERIES	QTY	DESCRIPTION
651758	45	2	M6 x 12mm SHCS & Hammer Nut

CUTTING BUSHING



- For reduction from bore hole 10.2 mm to M8 thread
- Steel
- Cutting bushing tool comes separate



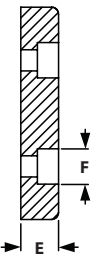
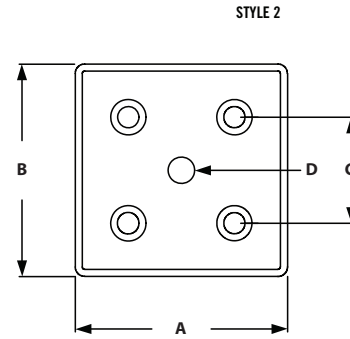
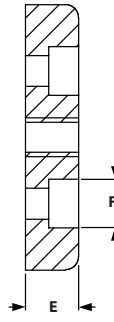
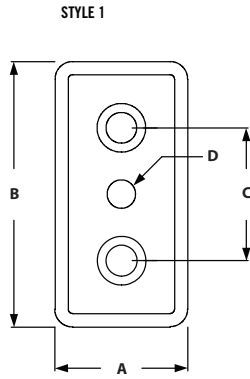
ITEM#	A	B	C	D	E	F	G	H	J
671076	M8	120°	6.6mm	16mm	6mm	4mm	9.7mm	3.1mm	10.7mm

CUTTING BUSH TOOL

ITEM#
671077

TSLOTS Hardware

BASE PLATE



- To mount leveling feet, rollers, hooks or similar components
- Connects to the extrusion slot
- Die-cast zinc

ITEM#	SERIES	STYLE	A	B	C	D-THREAD	E	F
671126	30	1	30mm	60mm	30mm	M8	12mm	M8 SHCS
671128	30	1	30mm	60mm	30mm	M10	12mm	M8 SHCS
671130	30	1	30mm	60mm	30mm	M12	12mm	M8 SHCS
671132	30	1	30mm	60mm	30mm	M14	12mm	M8 SHCS
671144	45	1	45mm	90mm	45mm	M10	16mm	M12 SHCS
671146	45	1	45mm	90mm	45mm	M12	16mm	M12 SHCS
671148	45	1	45mm	90mm	45mm	M14	16mm	M12 SHCS
671150	45	1	45mm	90mm	45mm	M16	16mm	M12 SHCS
671152	45	1	45mm	90mm	45mm	M20	16mm	M12 SHCS
671196	45	2	90mm	90mm	45mm	M10	16mm	M12 SHCS
671198	45	2	90mm	90mm	45mm	M12	16mm	M12 SHCS
671200	45	2	90mm	90mm	45mm	M14	16mm	M12 SHCS
671202	45	2	90mm	90mm	45mm	M16	16mm	M12 SHCS
671204	45	2	90mm	90mm	45mm	M20	16mm	M12 SHCS

RECOMMENDED FASTENERS (EXTRUSION END)

ITEM#	SERIES	STYLE	QTY	DESCRIPTION
651342	30	1	2	M8 x 12mm SHCS
683038	45	1	2	M12 x 30mm LHCS
683038	45	2	4	M12 x 30mm LHCS

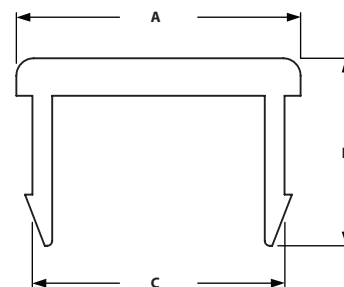
RECOMMENDED FASTENERS (EXTRUSION SLOT)

ITEM#	SERIES	STYLE	QTY	DESCRIPTION
651759	30	1	2	M12x 12mm SHCS & M8 Self-Aligning Trut

COVER PROFILE



◦ Covers the slot of the extrusion

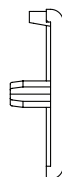
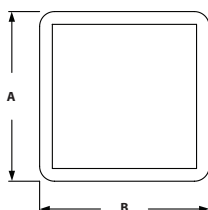


ITEM#	SERIES	COLOR	LENGTH	A	B	C
671020	30	Black	2 Meters	8.8mm	3.8mm	8.2mm
671612	30	Yellow	2 Meters	8.8mm	3.8mm	8.2mm
671613	30	Grey	2 Meters	8.8mm	3.8mm	8.2mm
671019	45	Black	2 Meters	11.5mm	7.5mm	10.2mm
671614	45	Yellow	2 Meters	11.5mm	7.5mm	10.2mm
671615	45	Grey	2 Meters	11.5mm	7.5mm	10.2mm

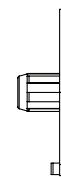
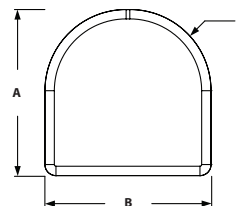
END CAPS



STYLE 1



STYLE 2



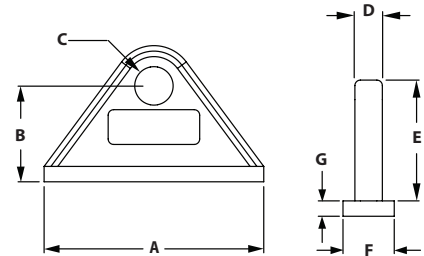
◦ Covers the end of the extrusion profiles

◦ Fiberglass reinforced nylon

ITEM#	SERIES	TYPE	STYLE	A	B	C
655703	20	Pin	1	20mm	20mm	--
671001	30	Pin	1	22.5mm	45mm	--
671000	30	Pin	1	30mm	30mm	--
671013	30	Pin	1	30mm	60mm	--
671008	40	Pin	1	40mm	40mm	--
671002	45	Pin	1	45mm	45mm	--
671003	45	Pin	1	45mm	60mm	--
671009	45	Pin	1	45mm	90mm	--
671004	45	Pin	1	60mm	60mm	--
671007	45	Pin	1	60mm	90mm	--
671006	45	Pin	1	90mm	90mm	--
671756	45	Pin	2	45mm	45mm	R. 22mm

TSLOTS Hardware

TOOL HANGERS



- Ideal for hanging air tools, cable reels, heavy door panels or transporting cables
- Fiberglass reinforced nylon

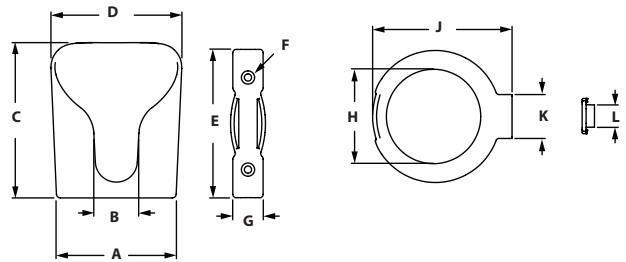
ITEM#	SERIES	A	B	C	D	E	F	G
655096	30/45	60mm	26mm	10.5mm	8/10mm	32.8mm	15mm	4.2mm
671025	30/45	60mm	26mm	10.5mm	8/10mm	32.8mm	19mm	4.2mm

ITEM#	SLOT
671018	Snap Hook Tool

CUP HOLDER



- To securely put down drinks, bottles, and cans
- Holds thermo bags, oil cans, or drills



ITEM#	VERSION	A	B	C	D	E	F	G	H	J	K	L
671078	Open Bottom	93mm	34mm	118mm	100mm	112mm	5.5mm	23mm	71mm	106mm	33mm	17mm
671079	Closed Bottom	93mm	34mm	118mm	100mm	112mm	5.5mm	23mm	N/A	106mm	33mm	17mm

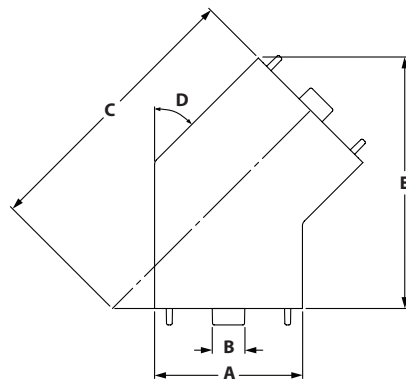
RECOMMENDED FASTENERS

ITEM#	SERIES	QTY	DESCRIPTION
651728	30	2	M5 x 16mm FHSCS & M5 Hammer Nut
651760	45	2	M5 x 20mm FHSCS & M5 Hammer Nut

45° ANGLE CONNECTOR



- Connects 2 extrusions at end at a 45° angle
- Die-cast aluminum and Nylon for cover cap
- Included fasteners- 2 Self-forming screws S12 x 30mm, 1 Hammer head screw M8 x 20, 1 flange nut M8



ITEM#	SERIES	A	B	C	D	E
671640	45	45.00mm	10.00mm	85.30mm	45°	76.20mm

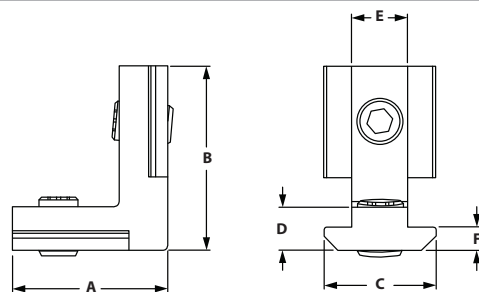
INCLUDED FASTENERS

ITEM#	SERIES	QTY	DESCRIPTION
671115	45	2	Self threaded M12 x 30mm
671372	45	1	M8 x 20mm Hammer Head
671610	45	1	M8 Flange Nut

INNER CONNECTORS



- Connects two extrusions at a 90° angle
- No machining required



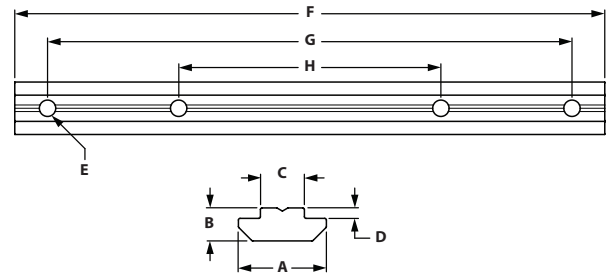
ITEM#	SERIES	A	B	C	D	E	F
671653	20	21.00mm	21.00mm	11.30mm	4.50mm	6.00mm	3.00mm
671654	30	21.00mm	30.00mm	15.80mm	7.80mm	8.00mm	6.00mm
671655	45	32.00mm	38.00mm	19.00mm	8.80mm	10.00mm	3.80mm

TSLOTS Hardware

CONNECTION STRIPS



- End-to-end connection for two extrusions
- No machining required
- Fasteners included

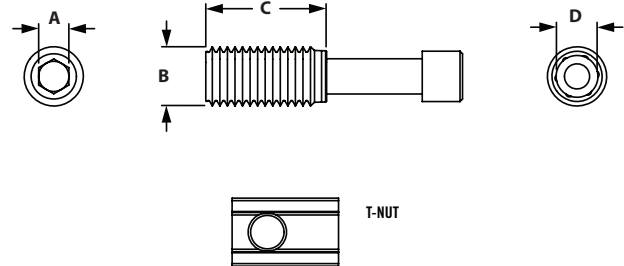


ITEM#	SERIES	A	B	C	D	E	F	G	H
671644	30	16.00mm	6.00mm	8.00mm	1.90mm	M6	180.00mm	160.00mm	80.00mm
671643	45	19.50mm	10.60mm	10.00mm	5.10mm	M8	180.00mm	158.00mm	28.00mm

T-MATIC CONNECTORS



- Connects two extrusions at a 90° angle
- No machining required
- T-nut included

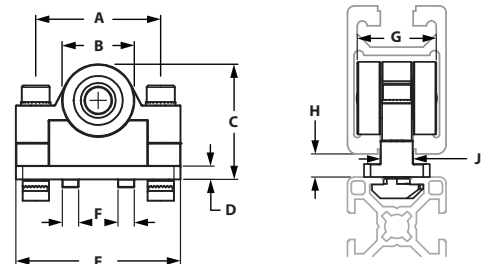


ITEM#	SERIES	A	B	C	D
671647	30	5.00mm	11.50mm	24.00mm	T45
671645	45	6.00mm	12.00mm	24.00mm	T50

C-CHANNEL SLIDING DOOR ROLLER



- Movable suspension for sliding doors built for profile item 670086
- M5 Hammer nuts, screws, and washers are included
- Used with slot 8 B-Series extrusions

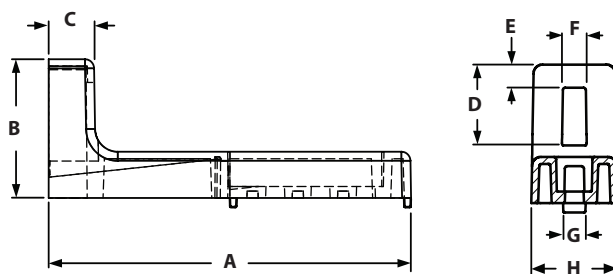


ITEM#	SERIES	EXTRUSION	A	B	C	D	E	F	G	H	J
671724	30	30mm	5.00mm	22.00mm	35.00mm	4.00mm	50.00mm	8.00mm	24.00mm	6.00mm	10.00mm

FLOOR MOUNT BRACKETS



- Connect extrusion to floor vertically
- Die-cast zinc



ITEM#	SERIES	EXTRUSION USE	A	B	C	D	E	F	G	H
671095	30	30 mm	120.00mm	45.00mm	15.00mm	15.00mm	30.00mm	8.00mm	10.00mm	19.00mm
671099	45	40 mm	160.00mm	60.00mm	20.00mm	20.00mm	38.00mm	10.00mm	10.00mm	25.00mm

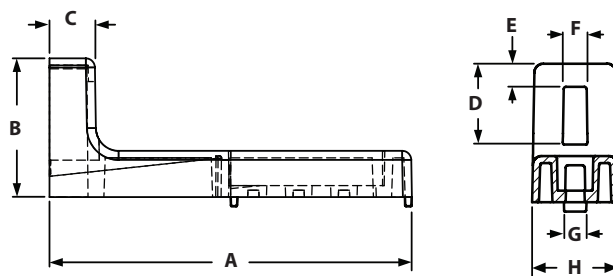
RECOMMENDED FASTENERS

ITEM#	SERIES	QTY	DESCRIPTION
651761	30	2	M6 x 10mm SHCS & M6 Hammer Nut
651743	45	2	M8 x 16mm SHCS & M8 Hammer Nut

ADJUSTABLE FLOOR MOUNT BRACKETS



- Connect extrusion to floor vertically adjustable; with adjustmet screw and threaded plate
- Die-cast zinc



ITEM#	SERIES	EXTRUSION USE	A	B	C	D	E	F	G	H
671096	30	30 mm	120.00mm	45.00mm	15.00mm	15.00mm	30.00mm	8.00mm	10.00mm	19.00mm
671100	45	40 mm	160.00mm	60.00mm	20.00mm	20.00mm	38.00mm	10.00mm	10.00mm	25.00mm

RECOMMENDED FASTENERS

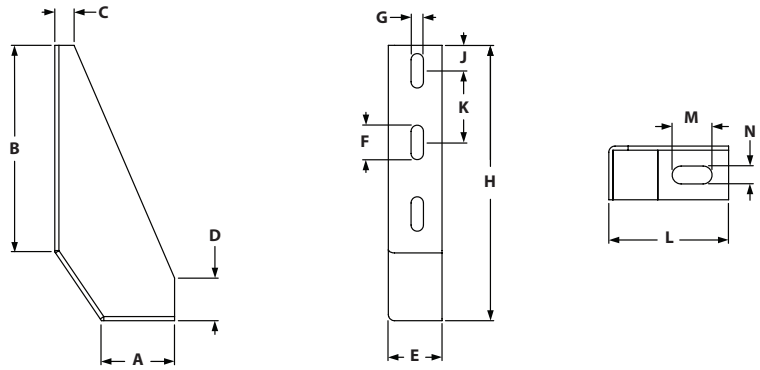
ITEM#	SERIES	QTY	DESCRIPTION
651761	30	2	M6 x 10mm SHCS & M6 Hammer Nut
651743	45	2	M8 x 16mm SHCS & M8 Hammer Nut

TSLOTS Hardware

FLOOR BRACKETS



◦ Material: Zinc Plated Steel



ITEM#	SERIES	EXTRUSION USE
671101	30/45	45 mm

A	B	C	D	E	F	G	H	J	K	L	M	N
53.00mm	150.00mm	14.00mm	31.00mm	42.00mm	25.00mm	9.00mm	200.00mm	18.50mm	52.00mm	87.00mm	29.00mm	13.00mm

RECOMMENDED FASTENERS

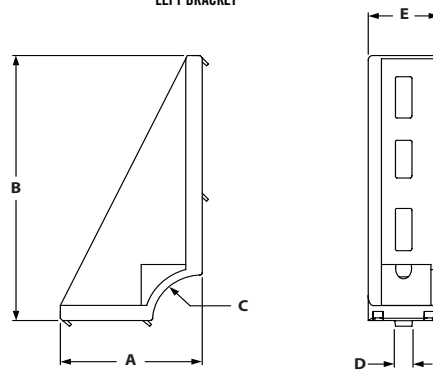
ITEM#	SERIES	QTY	DESCRIPTION
651744	30	3	M6 x 14mm SHCS & M6 Hammer Nut
651743	45	3	M8 x 16mm SHCS & M8 Hammer Nut

FLOOR BRACKETS 45



◦ Material: Die-cast aluminum

LEFT BRACKET



ITEM#	SERIES	EXTRUSION USE	STYLE	A	B	C	D	E
671208	45	45 mm	Left	86.00mm	175.00mm	30°	10.00mm	43.00mm

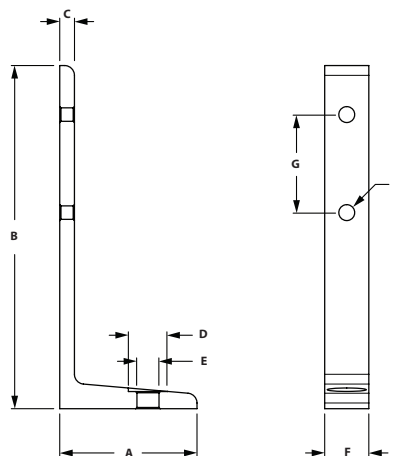
RECOMMENDED FASTENERS

ITEM#	SERIES	QTY	DESCRIPTION
651705	45	2	M8 x 20mm SHCS & Self-Aligning Tnut

2 HOLE FLOOR MOUNT BRACKET



- Strong economy base plates
- Bolts directly in the T-Slot
- Allows vertical adjustments



ITEM#	SERIES	EXTRUSION USE	A	B	C	D	E	F	G	H
671716	30	30 mm	56.00mm	140.00mm	6.00mm	22.00mm	11.00mm	27.00mm	40.00mm	7.00mm
671717	45	45 mm	56.00mm	140.00mm	6.00mm	28.00mm	13.50mm	41.00mm	40.00mm	9.00mm

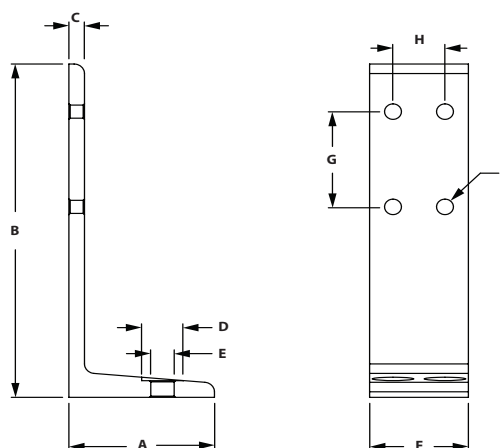
RECOMMENDED FASTENERS

ITEM#	SERIES	QTY	DESCRIPTION
651762	30	2	M6 x 16mm SHCS & M6 Hammer Nut
651743	45	2	M8 x 16mm SHCS & M8 Hammer Nut

4 HOLE FLOOR MOUNT BRACKET



- Strong economy base plates
- Bolts directly in the T-Slot
- Allows vertical adjustments



ITEM#	SERIES	A	B	C	D	E	F	G	H	J
671704	30	56.00mm	140.00mm	6.00mm	22.00mm	11.00mm	57.00mm	40.00mm	30.00mm	7.00mm
671705	45	56.00mm	140.00mm	6.00mm	28.00mm	13.50mm	86.00mm	40.00mm	45.00mm	9.00mm

RECOMMENDED FASTENERS

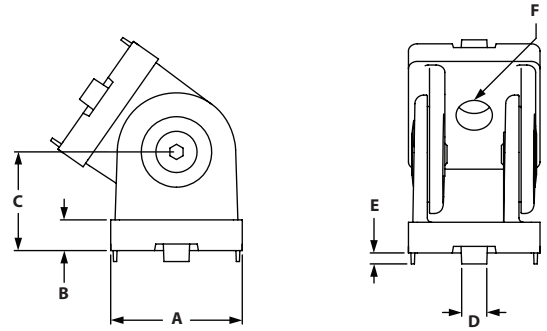
ITEM#	SERIES	QTY	DESCRIPTION
651762	30	4	M6 x 16mm SHCS & M6 Hammer Nut
651743	45	4	M8 x 16mm SHCS & M8 Hammer Nut

Pivot Joints

PIVOT JOINT 30



- Bushing enables pivot to be both structural and dynamic
- Locating pins can be removed to accommodate both extrusion end and side mount assembly



ITEM#	MATERIAL	SERIES	A	B	C	D	E	F
671102	Die Cast Zinc	30	30mm	7mm	22.5mm	8mm	2.5mm	8.3mm

RECOMMENDED FASTENERS (TO EXTRUSION SLOT)

ITEM#	SERIES	QTY	DESCRIPTION
651763	30	2	M8 x 14mm SHCS & Self-Aligning Tnut

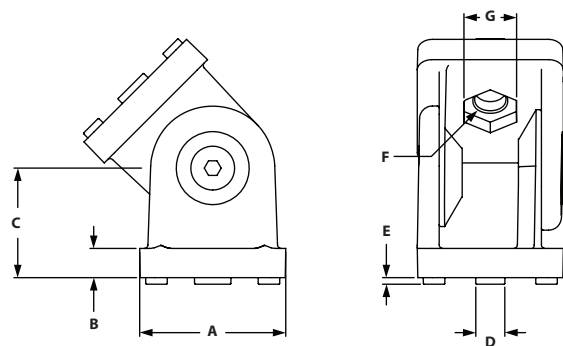
RECOMMENDED FASTENERS (TO EXTRUSION END)

BOLT ITEM	QTY	BOLT
651350	2	M8 x 25mm SHCS

PIVOT JOINT 40



- Bushing enables pivot to be both structural and dynamic
- Locating pins can be removed to accommodate both extrusion end and side mount assembly



ITEM#	MATERIAL	SERIES	A	B	C	D	E	F	G
664088	Die Cast Zinc	40	40mm	8mm	30mm	8mm	1.8mm	8.5mm	14mm

RECOMMENDED FASTENERS (TO EXTRUSION SLOT)

ITEM#	SERIES	QTY	DESCRIPTION
651764	40	2	M8 x 16mm SHCS & Self-Aligning Tnut

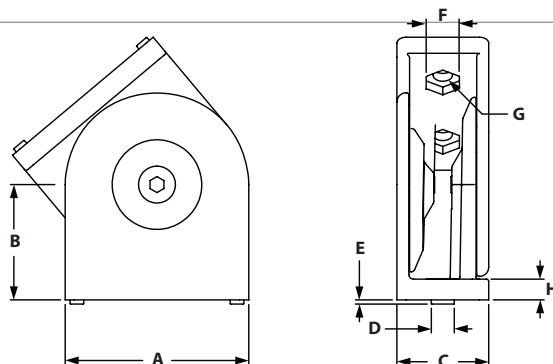
RECOMMENDED FASTENERS (TO EXTRUSION END)

ITEM#	SERIES	QTY	DESCRIPTION
651765	40	2	M8 x 30mm SHCS & Cutting Bushing

PIVOT JOINT 4080



- Bushing enables pivot to be both structural and dynamic
- Locating pins can be removed to accommodate both extrusion end and side mount assembly



ITEM#	MATERIAL	SERIES	A	B	C	D	E	F	G	H
671103	Die Cast Zinc	40	80mm	50mm	40mm	8mm	2.8mm	14mm	8.4mm	9mm

RECOMMENDED FASTENERS (TO EXTRUSION SLOT)

ITEM#	SERIES	QTY	DESCRIPTION
651764	40	4	M8 x 16mm SHCS & Self-Aligning Tnut

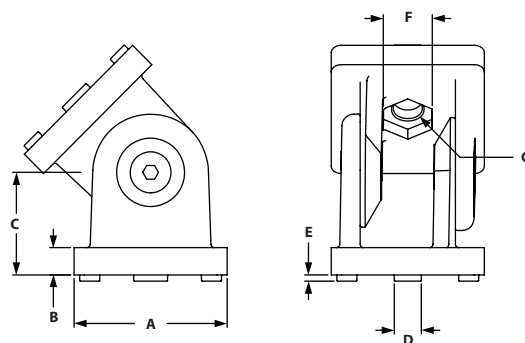
RECOMMENDED FASTENERS (TO EXTRUSION END)

ITEM#	SERIES	QTY	DESCRIPTION
651765	40	4	M8 x 30mm SHCS & Cutting Bushing

PIVOT JOINT 45



- Bushing enables pivot to be both structural and dynamic
- Locating pins can be removed to accommodate both extrusion end and side mount assembly



ITEM#	MATERIAL	SERIES	A	B	C	D	E	F	G
671106	Die Cast Zinc	45	45mm	8mm	30mm	10mm	1.8mm	14mm	8.5mm

RECOMMENDED FASTENERS (TO EXTRUSION SLOT)

ITEM#	SERIES	QTY	DESCRIPTION
651764	45	2	M8 x 16mm SHCS & Self-Aligning Tnut

RECOMMENDED FASTENERS (TO EXTRUSION END)

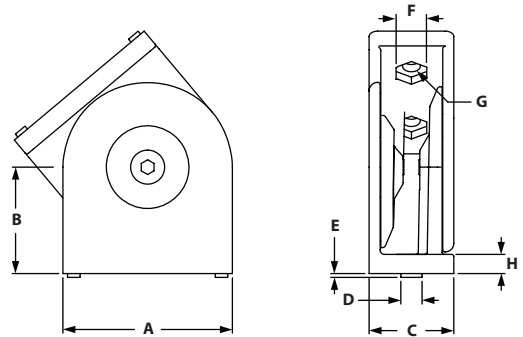
ITEM#	SERIES	QTY	DESCRIPTION
651765	45	2	M8 x 30mm SHCS & Cutting Bushing

Pivot Joints With Locking Lever

PIVOT JOINT 4590



- Bushing enables pivot to be both structural and dynamic
- Locating pins can be removed to accommodate both extrusion end and side mount assembly



ITEM#	MATERIAL	SERIES	A	B	C	D	E	F	G	H
671105	Die Cast Zinc	45	90mm	50mm	45mm	10mm	2mm	14mm	8.4mm	9mm

RECOMMENDED FASTENERS (TO EXTRUSION SLOT)

ITEM#	SERIES	QTY	DESCRIPTION
651764	40	4	M8 x 16mm SHCS & Self-Aligning Tnut

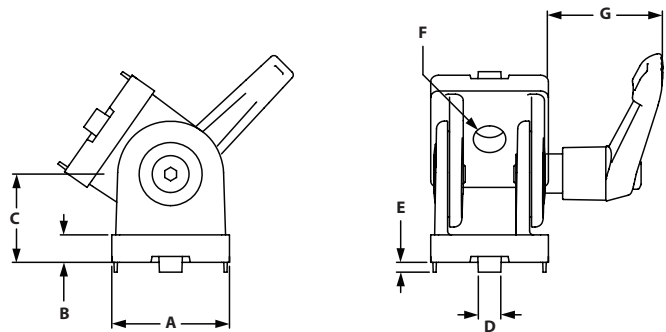
RECOMMENDED FASTENERS (TO EXTRUSION END)

ITEM#	SERIES	QTY	DESCRIPTION
651765	40	4	M8 x 30mm SHCS & Cutting Bushing

PIVOT JOINT 30 WITH LOCKING LEVER



- Bushing enables pivot to be both structural and dynamic
- Locating pins can be removed to accommodate both extrusion end and side mount assembly



ITEM#	MATERIAL	SERIES	A	B	C	D	E	F	G
671107	Die Cast Zinc	30	30mm	7mm	22.5mm	8mm	2.5mm	8.3mm	30mm

RECOMMENDED FASTENERS (TO EXTRUSION SLOT)

ITEM#	SERIES	QTY	DESCRIPTION
651763	30	2	M8 x 14mm SHCS & Self-Aligning Tnut

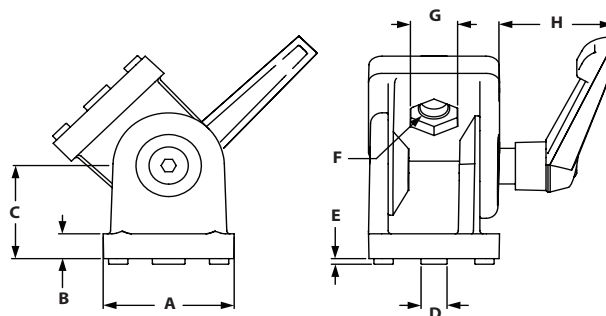
RECOMMENDED FASTENERS (TO EXTRUSION END)

BOLT ITEM	QTY	BOLT
651350	2	M8 x 25mm SHCs

PIVOT JOINT 40 WITH LOCKING LEVER



- Bushing enables pivot to be both structural and dynamic
- Locating pins can be removed to accommodate both extrusion end and side mount assembly



ITEM#	MATERIAL	SERIES	A	B	C	D	E	F	G	H
664089	Die Cast Zinc	40	40mm	8mm	30mm	8mm	1.8mm	8.5mm	14mm	41mm

RECOMMENDED FASTENERS (TO EXTRUSION SLOT)

ITEM#	SERIES	QTY	DESCRIPTION
651764	40	2	M8 x 16mm SHCS & Self-Aligning Tnut

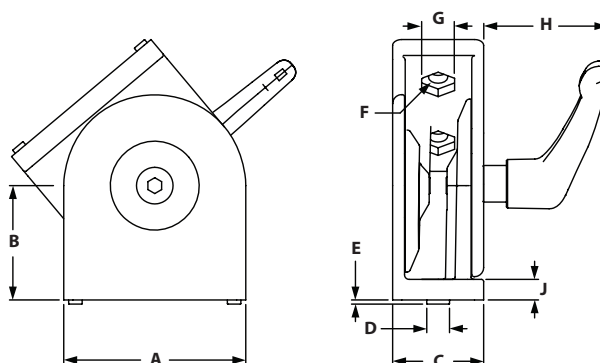
RECOMMENDED FASTENERS (TO EXTRUSION END)

ITEM#	SERIES	QTY	DESCRIPTION
651765	40	2	M8 x 30mm SHCS & Cutting Bushing

PIVOT JOINT 4080 WITH LOCKING LEVER



- Bushing enables pivot to be both structural and dynamic
- Locating pins can be removed to accommodate both extrusion end and side mount assembly



ITEM#	MATERIAL	SERIES	A	B	C	D	E	F	G	H	J
671108	Die Cast Zinc	40	80mm	50mm	40mm	10mm	2.8mm	14mm	8.4mm	9mm	9mm

RECOMMENDED FASTENERS (TO EXTRUSION SLOT)

ITEM#	SERIES	QTY	DESCRIPTION
651764	40	4	M8 x 16mm SHCS & Self-Aligning Tnut

RECOMMENDED FASTENERS (TO EXTRUSION END)

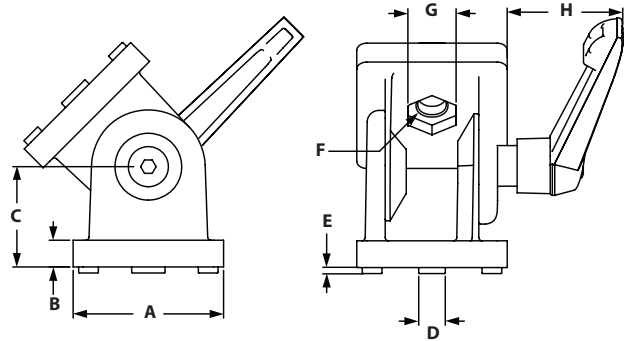
ITEM#	SERIES	QTY	DESCRIPTION
651765	40	4	M8 x 30mm SHCS & Cutting Bushing

Pivot Joints With Locking Lever

PIVOT JOINT 45 WITH LOCKING LEVER



- Bushing enables pivot to be both structural and dynamic
- Locating pins can be removed to accommodate both extrusion end and side mount assembly



ITEM#	MATERIAL	SERIES	A	B	C	D	E	F	G	H
671111	Die Cast Zinc	45	45mm	8mm	30mm	10mm	1.8mm	8.5mm	14mm	38mm

RECOMMENDED FASTENERS (TO EXTRUSION SLOT)

ITEM#	SERIES	QTY	DESCRIPTION
651764	45	2	M8 x 16mm SHCS & Self-Aligning Trnut

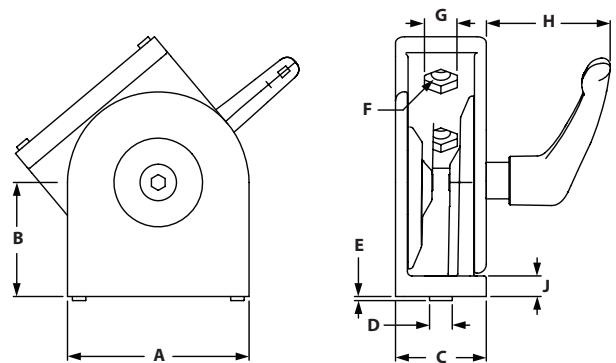
RECOMMENDED FASTENERS (TO EXTRUSION END)

ITEM#	SERIES	QTY	DESCRIPTION
651765	45	2	M8 x 30mm SHCS & Cutting Bushing

PIVOT JOINT 4590 WITH LOCKING LEVER



- Bushing enables pivot to be both structural and dynamic
- Locating pins can be removed to accommodate both extrusion end and side mount assembly



ITEM#	MATERIAL	SERIES	A	B	C	D	E	F	G	H	J
671110	Die Cast Zinc	45	90mm	50mm	45mm	10mm	8mm	8.4mm	14mm	51.3mm	9mm

RECOMMENDED FASTENERS (TO EXTRUSION SLOT)

ITEM#	SERIES	QTY	DESCRIPTION
651764	45	4	M8 x 16mm SHCS & Self-Aligning Trnut

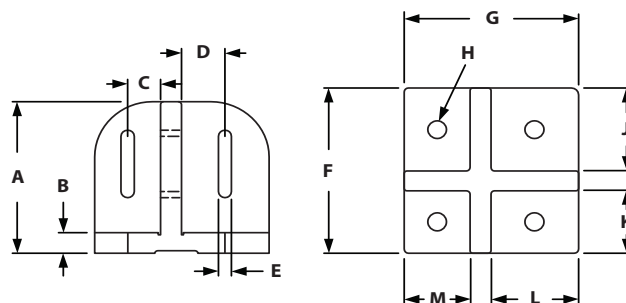
RECOMMENDED FASTENERS (TO EXTRUSION END)

ITEM#	SERIES	QTY	DESCRIPTION
651765	45	4	M8 x 30mm SHCS & Cutting Bushing

FG 120MM FOOTPLATE



- Flush mounting of supports
- Die-Cast aluminum
- Mount extrusions as posts



ITEM#	SERIES	A	B	C	D	E	F	G	H	J	K	L	M
671637	45	110mm	15mm	22.5mm	30mm	9mm	120mm	120mm	13mm	60mm	45mm	60mm	45mm

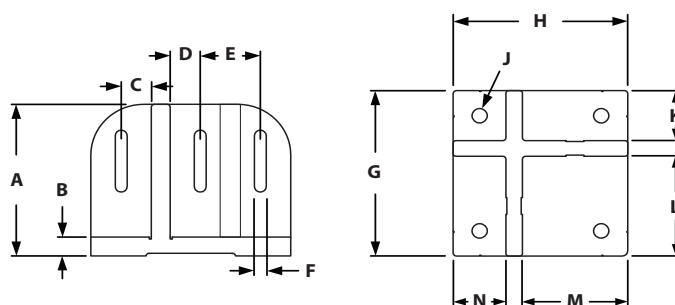
RECOMMENDED FASTENERS (TO EXTRUSION SLOT)

ITEM#	SERIES	QTY	DESCRIPTION
651766	45	2-4	M8 x 30mm Hammer Head & Flanged T-Nut

FG 150MM FOOTPLATE



- Flush mounting of supports
- Die-Cast aluminum
- Mount extrusions as posts



ITEM#	SERIES	A	B	C	D	E	F	G	H	J	K	L	M	N
671638	45	120mm	15mm	25mm	30mm	45mm	9mm	150mm	150mm	13mm	45mm	90mm	90mm	45mm

RECOMMENDED FASTENERS (TO EXTRUSION SLOT)

ITEM#	SERIES	QTY	DESCRIPTION
651766	45	2-4	M8 x 30mm Hammer Head & Flanged T-Nut