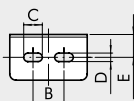
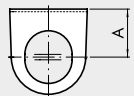


MOUNTING BRACKET FOR REG. AND FR



Code	Description
9200701	SF100- BIT-ND 1/4 - SY1
9400701	SF200-ND-3/8 1/2 - SY2

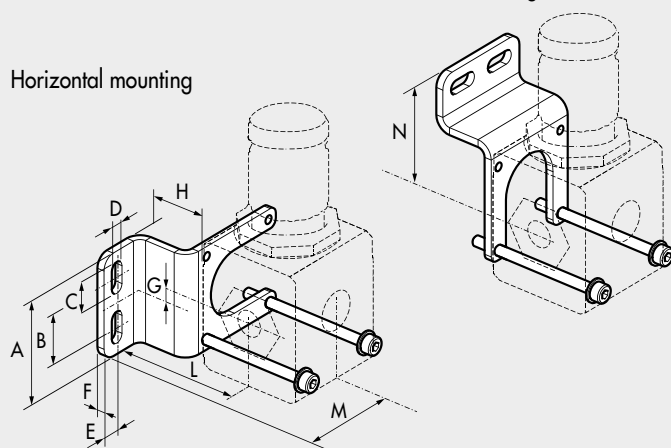


Code	A	B	C	D	E
9200701	1.26	0.79	0.48	0.22	0.56
9400701	1.66	1.59	0.47	0.22	0.59

MOUNTING BRACKET

Vertical mounting

Horizontal mounting

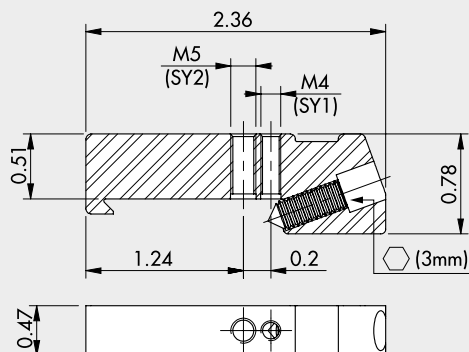


Code	Description
9200716X	Mounting bracket SY1
9200717X	Mounting bracket SY2

Note: Supplie complete with screws and washers.
Max torque 0.59 lbf ft for SY1 - Max torque 1.47 lbf ft for SY2
Codes to be used for units in the standard and the anti-corrosion version

Code	A	B	C	D	E	F	G	H	L	M	N
9200716X	1.63	0.79	0.5	0.22	0.276	0.12	0.03	0.98	1.72	1.83	1.85
9200717X	2.36	1.57	0.5	0.22	0.315	0.12	0.05	1.18	1.85	2.29	2.34

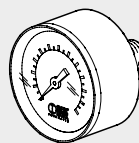
CONNECTION BRACKETS ON THE BAR (DIN EN50022)



Code	Description
9200718X	Connection brackets on DIN bar, SY1 - SY2

Note: 2 pieces per pack complete with screws and washers.
Max torque 0.8 Nm for SY1 - Max torque 2.0 Nm for SY2
Codes to be used for units in the standard and the anti-corrosion version

PRESSURE GAUGES

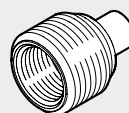


Code	Description
9700101	M 40 1/8 012 (0-180)
9700102	M 40 1/8 04 (0-60)
9800101	M 50 1/8 012 (0-180)
9800102	M 50 1/8 04 (0-60)
9900101	M 63 1/4 012 (0-180)



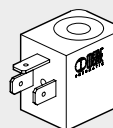
9700109	M 40x40 1/8 04 (0-60)
9700110	M 40x40 1/8 012 (0-180)

ADAPTERS FOR PRESSURE GAUGES (SY2)



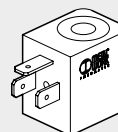
Code	Description
9210005	1/4 adapter for 1/8 pressure gauge

COIL 22 mm FOR APR AND V3V ELPN



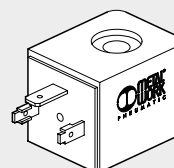
Code	Description
W0215000151	Coil 22 Ø 8 BA 2W-12VDC
W0215000101	Coil 22 Ø 8 BA 2W-24VDC
W0215000111	Coil 22 Ø 8 BA 3.5VA-24VAC
W0215000121	Coil 22 Ø 8 BA 3.5VA-110VAC
W0215000131	Coil 22 Ø 8 BA 3.5VA-220VAC

"UL" AND "CSA" COILS 22 mm



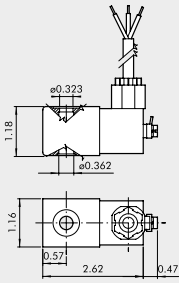
Code	Description
W0215000251	Coil 22 Ø 8 BA 2W-12VDC UR
W0215000201	Coil 22 Ø 8 BA 2W-24VDC UR
W0215000211	Coil 22 Ø 8 BA 3.5VA-24VAC UR
W0215000221	Coil 22 Ø 8 BA 3.5VA-110VAC UR
W0215000231	Coil 22 Ø 8 BA 3.5VA-220VAC UR

COIL 30 mm FOR APR AND V3V ELPN



Code	Description
W0210010100	Coil 30 Ø 8 2W-24VDC
W0210011100	Coil 30 Ø 8 3.5VA-24VAC 50/60 HZ
W0210012100	Coil 30 Ø 8 3.5VA-110VAC 50/60 HZ
W0210013100	Coil 30 Ø 8 3.5VA-220VAC 50/60 HZ

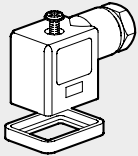
KIT FOR COIL EEXM



Code	Description
0227606913	Kit for coil 30 24 VDC EEXMT5 cable 118 inch
0227606915	Kit for coil 30 24 VDC EEXMT5 cable 197 inch
0227608013	Kit for coil 30 24 VAC EEXMT5 cable 118 inch
0227608015	Kit for coil 30 24 VAC EEXMT5 cable 197 inch
0227608023	Kit for coil 30 110 VAC EEXMT5 cable 118 inch
0227608025	Kit for coil 30 110 VAC EEXMT5 cable 197 inch
0227608033	Kit for coil 30 230 VAC EEXMT5 cable 118 inch
0227608035	Kit for coil 30 230 VAC EEXMT5 cable 197 inch

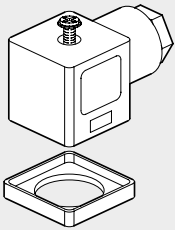
According to Atex 94/9 CE rule,
 Ⓜ II 2G Ex mb IIC T4/T5 Gb
 Ⓜ II 2D Ex tb IIIC T130/T95 °C IP66 Db

ELECTRIC CONNECTOR 22 mm FOR APR AND V3V ELPN



Code	Description
W0970510011	Connector standard
W0970510012	Connector 22 LED 24V
W0970510013	Connector 22 LED 110V
W0970510014	Connector 22 LED 220V
W0970510015	Connector 22 LED VDR 24V
W0970510016	Connector 22 LED VDR 110V
W0970510017	Connector 22 LED VDR 220V
W0970510070	Connector 22 ATEX II 2 GD

ELECTRIC CONNECTOR 30 mm FOR APR AND V3V ELPN



Code	Description
W0970520033	Connector 30 STD
W0970520034	Connector 30 LED 24V
W0970520035	Connector 30 LED 110V
W0970520036	Connector 30 LED 220V
W0970520037	Connector 30 LED VDR 24V
W0970520038	Connector 30 LED VDR 110V
W0970520039	Connector 30 LED VDR 220V

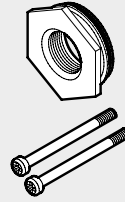
KIT COIL SIDE 22 IP65



Code	Description
0222100100	Kit for coils 22 - IP65

Improved IP65 protection, even after prolonged exposure to atmospheric agents.

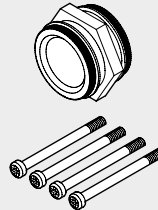
THREADED PORT



Code	Description
9210001U	Kit IN OUT 1/8 NPT SY1
9210002U	Kit IN OUT 1/4 NPT SY1
9210003U	Kit IN OUT 3/8 NPT SY1
9210011U	Kit IN OUT 3/8 NPT SY2
9210012U	Kit IN OUT 1/2 NPT SY2
9210013U	Kit IN OUT 3/4 NPT SY2
9210014U	Kit IN OUT 1 NPT SY2
9210001Z	Kit IN OUT 1/8 NPT SY1 anti-corrosion
9210002Z	Kit IN OUT 1/4 NPT SY1 anti-corrosion
9210003Z	Kit IN OUT 3/8 NPT SY1 anti-corrosion
9210011Z	Kit IN OUT 3/8 NPT SY2 anti-corrosion
9210012Z	Kit IN OUT 1/2 NPT SY2 anti-corrosion
9210013Z	Kit IN OUT 3/4 NPT SY2 anti-corrosion
9210014Z	Kit IN OUT 1 NPT SY2 anti-corrosion

Max torque 0.3 lbf ft for SY1
 Max torque 1.84 lbf ft for SY2

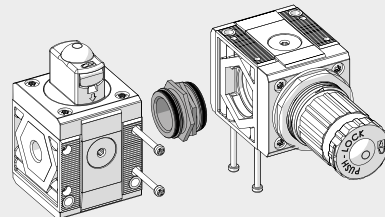
CONNECTING NIPPLE KIT



Code	Description
9210000	Connecting nipple kit SY1
9210010	Connecting nipple kit SY2
9210000X	Connecting nipple kit SY1 anti-corrosion
9210010X	Connecting nipple kit SY2 anti-corrosion

Max torque 0.3 lbf ft for SY1
 Max torque 1.84 lbf ft for SY2

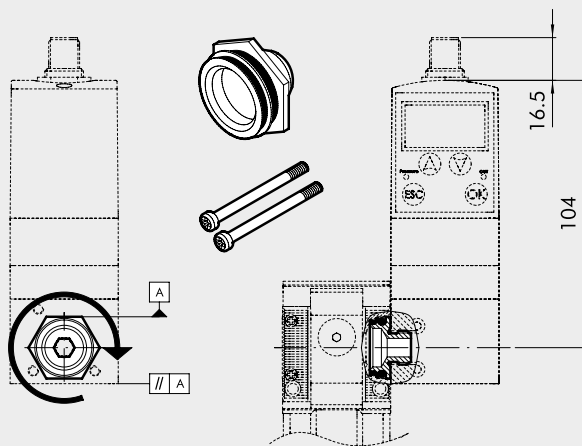
90° CONNECTING ELEMENT KIT



Code	Description
9210009	90° SY1 connection element kit
9210019	90° SY2 connection element kit
9210009X	90° anti-corrosion SY1 connection element kit
9210019X	90° anti-corrosion SY2 connection element kit

Max torque 0.3 lbf ft for SY1
 Max torque 1.84 lbf ft for SY2

KIT CONNECTING REGTRONIC 1/4 AND GS REGULATOR



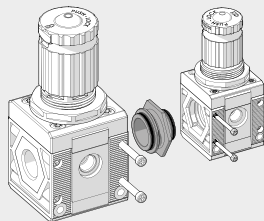
Code	Description
9210004	Adaptor for REGTRONIC 1/4 SY1

Max torque for screw, 0.3 lbf ft

Instructions:

- 1) Screw the connecting bushing onto the REGTRONIC 1/4 as far as it will go.
Use sealant on the G1/4 thread to provide a further seal.
- 2) Unscrew the bushing slightly until two surfaces of the hexagon are parallel to the body of REGTRONIC 1/4 (see diagram).
- 3) Insert the bushing into the Syntesi® unit.
- 4) Tighten the two self-tapping screws in the Syntesi® unit to a torque of 0.3 lbf ft max.

SY1 - SY2 SIZE ADAPTER

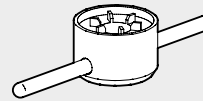


Code	Description
9210006	SY1 - SY2 size adapter
9210006X	SY1 - SY2 size adapter anti-corrosion

Max torque for screw, 0.3 lbf ft for SY1

Max torque for screw, 1.84 lbf ft for SY2

BOWL DISASSEMBLY SPANNER



Code	Description
9170601	CS TF - TL BIT/SY1
9210050	CS TF - TL SY2

WALL-FIXING SCREW



Code	Description
9210030	M4 x 55 fixing screw SY1
9210031	M5 x 75 fixing screw SY2

Max torque 0.59 lbf ft

Max torque 1.47 lbf ft

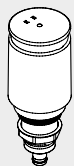
PADLOCK



Code	Description
9062401	Padlock

NOTES

AUTOMATIC DRAIN (RA)



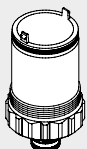
Code	Description
9000802	RA automatic drain spare part

AUTOMATIC DRAIN (SAC)



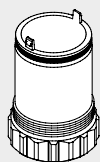
Code	Description
9000803	Spares SAC automatic drain

BOWL RMSA/RA/SAC



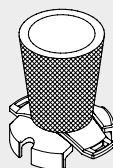
Code	Description
9210100	Bowl FIL FR DEP RMSA SY1
9210101	Bowl FIL FR RA SY1
9210102	Bowl FIL FR DEP SAC SY1
9210105	Bowl FIL FR DEP RMSA SY2
9210106	Bowl FIL FR RA SY2
9210107	Bowl FIL FR DEP SAC SY2

LUBRICATOR BOWL



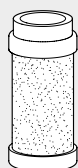
Code	Description
9210110	Bowl LUB SY1
9210115	Bowl LUB SY2

FILTERING ELEMENT



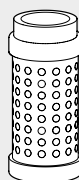
Code	Description
9210150	Filtering element 5 (yellow) μm SY1
9210151	Filtering element 20 (white) μm SY1
9210152	Filtering element 50 (blue) μm SY1
9210155	Filtering element 5 (yellow) μm SY2
9210156	Filtering element 20 (white) μm SY2
9210157	Filtering element 50 (blue) μm SY2

PURIFIER FILTERING ELEMENT



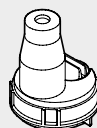
Code	Description
9210160	Cartridge DEP SY1
9210165	Cartridge DEP SY2

AC FILTERING ELEMENT



Code	Description
9210161	Cartridge AC SY1
9210166	Cartridge AC SY2

TRANSPARENT LUBRICATOR COVER



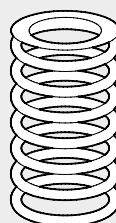
Code	Description
9210180	Transparent cover LUB SY1
9210185	Transparent cover LUB SY2

LUBRICATOR OIL-FILLING CAP



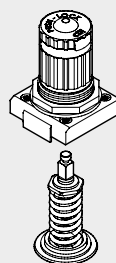
Code	Description
9210181	Oil-filling cap LUB SY1
9210186	Oil-filling cap LUB SY2

SPRINGS FOR REGULATORS AND FR



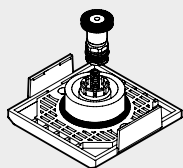
Code	Description
9210190	MO 02 (0-30 psi) SY1
9210191	MO 04 (0-60 psi) SY1 / SY1 anti-corrosion
9210192	MO 08 (0-120 psi) SY1
9210193	MO 012 (0-180 psi) SY1
9210195	MO 02 (0-30 psi) SY2
9210196	MO 04 (0-60 psi) SY2
9210197	MO 08 (0-120 psi) SY2
9210198	MO 012 (0-180 psi) SY2
9210192X	MO 08 (0-120 psi) SY1 anti-corrosion
9210193X	MO 012 (0-180 psi) SY1 anti-corrosion
9210197X	MO 08 (0-120 psi) SY2 anti-corrosion
9210198X	MO 012 (0-180 psi) SY2 anti-corrosion

BELL FOR REG AND FR



Code	Description
9210200	Bell 02 (0-30 psi) SY1
9210201	Bell 04 (0-60 psi) SY1
9210202	Bell 08 (0-120 psi) SY1
9210203	Bell 012 (0-180 psi) SY1
9210220	Bell 02 (0-30 psi) SY2
9210221	Bell 04 (0-60 psi) SY2
9210222	Bell 08 (0-120 psi) SY2
9210223	Bell 012 (0-180 psi) SY2
9210202X	Bell 08 (0-120 psi) SY1 anti-corrosion
9210203X	Bell 012 (0-180 psi) SY1 anti-corrosion
9210222X	Bell 08 (0-120 psi) SY2 anti-corrosion
9210223X	Bell 012 (0-180 psi) SY2 anti-corrosion

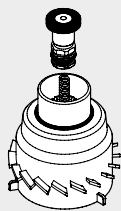
POPPET FOR REG



Code	Description
9210210	Poppet REG SY1
9210230	Poppet REG SY2
9210210X	Poppet REG SY1 anti-corrosion
9210230X	Poppet REG SY2 anti-corrosion

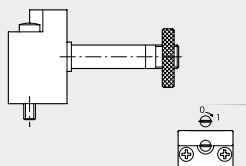
NOTES

POPPET FOR FR



Code	Description
9210211	Poppet FR 5 µm SY1
9210212	Poppet FR 20 µm SY1
9210213	Poppet FR 50 µm SY1
9210231	Poppet FR 5 µm SY2
9210232	Poppet FR 20 µm SY2
9210233	Poppet FR 50 µm SY2

CNOMO CONTROL FOR V3V AND APR SY2



Code	Description
9453922	Elpn Cnomo control kit, manual bistable

NOTES