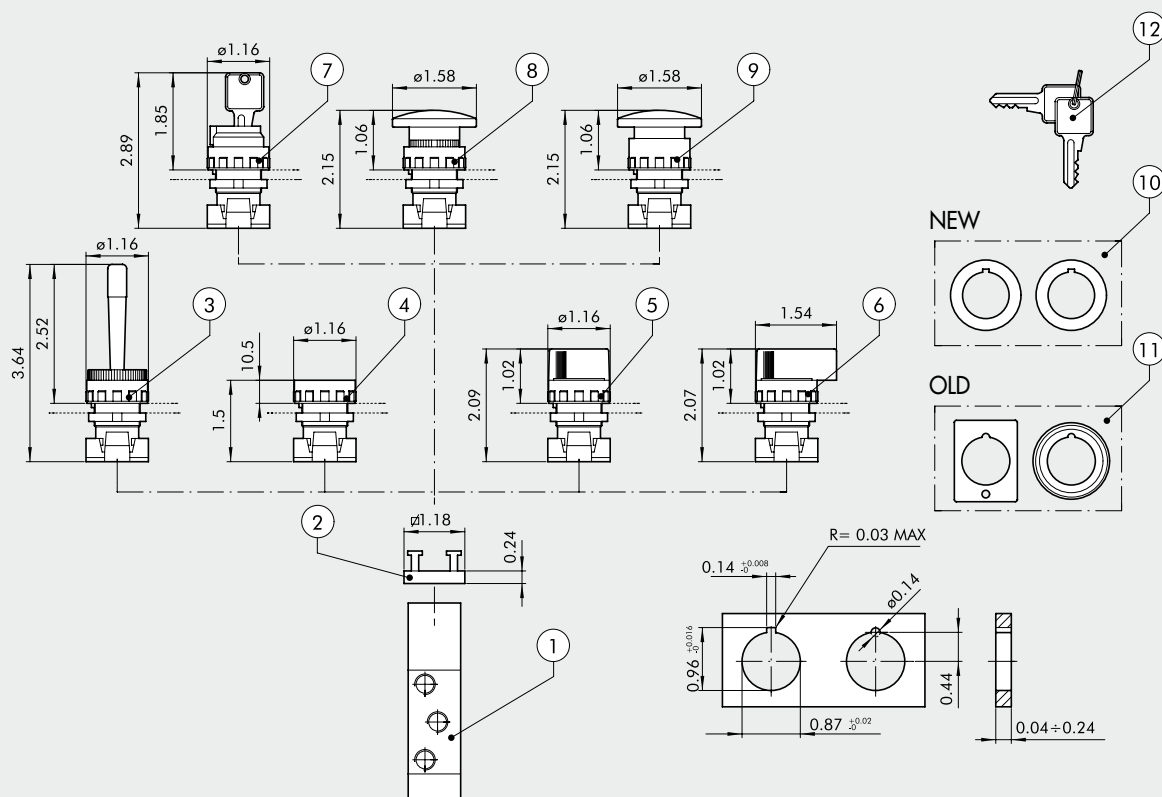


ASSEMBLY DIAGRAM FOR PILOT-ASSISTED HAND-OPERATED VALVES SERIES 70 WITH PANEL ACTUATORS

ORDERING CODES

Symbol	Reference	Code	Abbrev.	Description	Weight [lb]
	①	7010001800U	MAV 23 BRE NC U	Pilot-assisted plunger 3/2, 1/8" NPT	0.273
	①	7010001900U	MAV 25 BRE OO U	Pilot-assisted plunger 5/2, 1/8" NPT	0.331
	②	0351000050		2 places adaptor thickness 6.8 mm	0.015
	③	W0351000015		Red handler with horizontally pivoted lever	0.055
	④	W0351000011		Fat push button + 2 red/black coloured disks ◆ Bistable fat push button without disk	0.033
	⑤	W0351000030		Black selector short lever at 2 positions with return	0.044
		W0351000031		Black selector short lever at 2 positions	0.044
	⑤	W0351000032		Black selector short lever at 3 positions with return	0.044
		W0351000033		Black selector short lever at 3 positions	0.044
	⑥	W0351000034		Black selector long lever at 2 positions with return	0.057
		W0351000035		Black selector long lever at 2 positions	0.057
	⑥	W0351000036		Black selector long lever at 3 positions with return	0.057
		W0351000037		Black selector long lever at 3 positions	0.057
	⑦	W0351000016		2 positions key selector with extractable key in 2 positions	0.110
		W0351000018		2 positions key selector with extractable key in 0	0.110
	⑧	W0351000013		Red mushroom-head push button Ø 40 mm	0.060
		W0351000017		Black mushroom-head push button Ø 40 mm	0.060
	⑨	W0351000014		Red mushroom-head push button with lock Ø 40 mm	0.064
◆ It can't be supplied. As working replaced by selector with bistable short lever at 2 positions ⑤.	⑩	W0351000049		◆ Reducer from 30 to 22.5 mm	
✦ Usable only with technopolymer body selectors.	⑪	W0351000050		▲ Adapter for bore Ø 30 mm G2326	
▲ Usable only with metal body selectors.	⑫	W0351000021		✦ Key for ESC selectors	
		W0351000056		Green disk for push button ④	