

PNEUMATIC LOGIC

Metal Work logic elements are available with 5 different functions: OR, AND, NOT, YES, MEMORY.

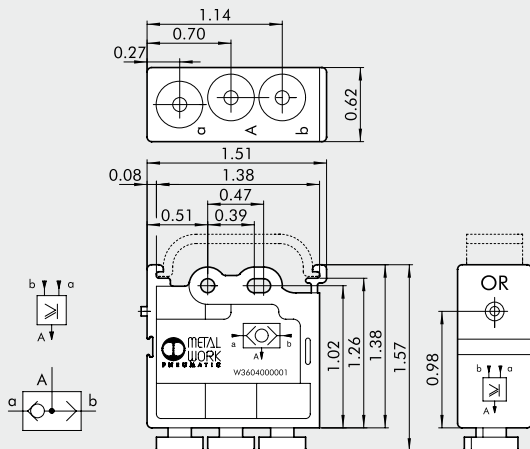
Main features common to all elements:

- Adaptor for Ω bar (DIN EN 50022) integral with the body.
- Built-in pressure indicator.
- Pipe locking system using $\varnothing 4$ ($\varnothing 5/32$) built-in fittings.



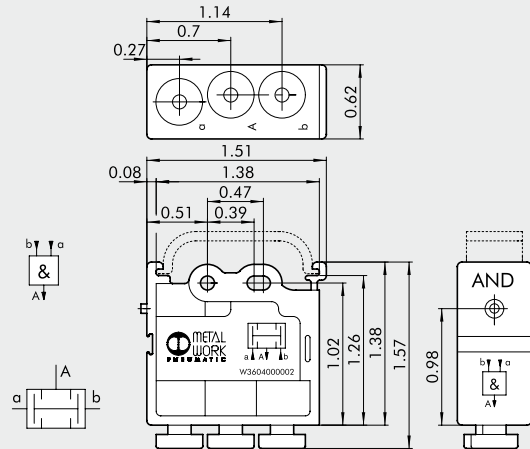
TECHNICAL DATA	
Operating temperature	°F
Valve fitting	14 to + 140
Pressure range	psi
	Push-in fitting for $\varnothing 4$ pipe ($\varnothing 5/32$)
	OR - AND: from 218 to 116
	YES-NOT - MEMORY: from 0 to 116, pilot pressure from 21.8 to 116
	NOT: 87 switching threshold = 5.8
Nominal diameter	in
Flow rate at 6 bar (0.6 MPa-87 psi) ΔP 1 bar (0.1 MPa-14.5 psi)	Nl/min
	scfm
	0.106
	100
	3.53
Fluid	Lubricated or unlubricated filtered compressed air; must be uninterrupted when lubricated
Recommended lubricant	ISO e UNI FD22
Actionament	Via compressed air
Reset	AND-OR: via compressed air
	YES-NOT via mechanical spring
	MEMORY: via compressed air
Installation	In any position
Mounted	On Omega bar (DIN EN 50022) size 35 x 7 or 35 x 15 mm
	Wall-mounted with $\varnothing 0.165$ holes
MATERIALS	
Body	Technopolymer
Spool	Aluminium

LOGIC ELEMENT: OR



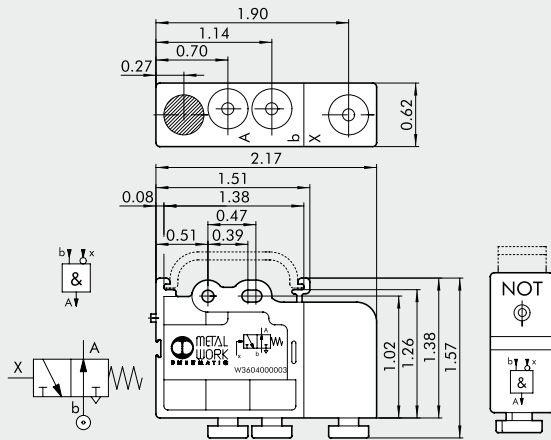
Code	Description
W3604000001	OR - logic sum

LOGIC ELEMENT: AND



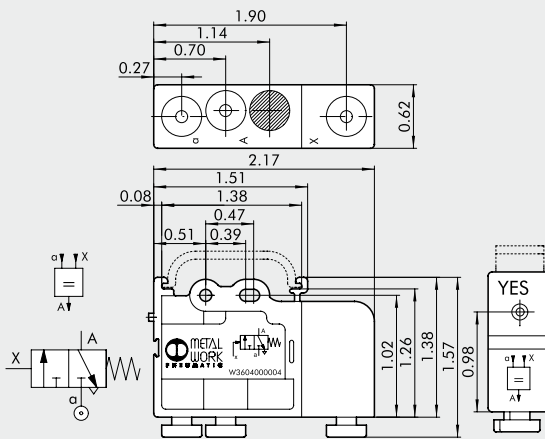
Code	Description
W3604000002	AND - logic product

LOGIC ELEMENT: NOT



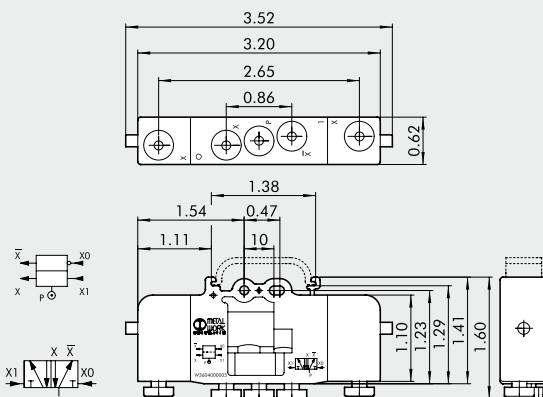
Code W3604000003
Description NOT - Negation

LOGIC ELEMENT: YES



Code W3604000004
Description YES - Affirmation

LOGIC ELEMENT: MEMORY



Code W3604000005
Description Memory

NOTES

TIMER

The Timer is part of Metal Work range of logic elements, which also includes OR, AND, NOT, YES, MEMORY.

The value of the signal output delay is set by rotating a knob. It can work both as 3/2 NC and 3/2 NO, depending on whether feeding is through port "a" or port "b".

The maximum delay time can be increased by unscrewing a plug and connecting the port to an external auxiliary tank.

- Adaptor for Ω bar (DIN EN 50022) integrated in the body.
- Pressure indicator via an orange pin
- Pipe clamping system using $\varnothing 4$ ($\varnothing 5/32$) built-in push-on fittings.

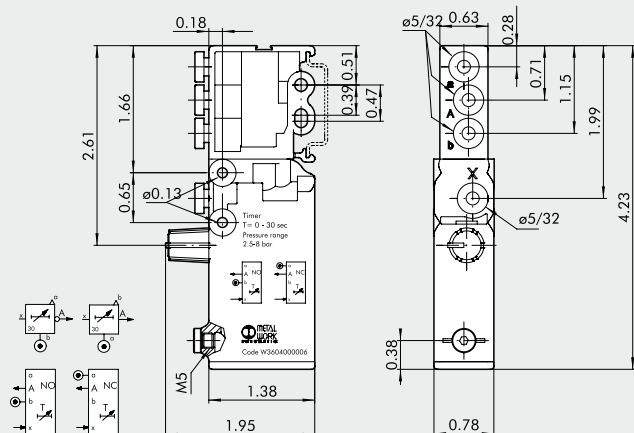


TECHNICAL DATA

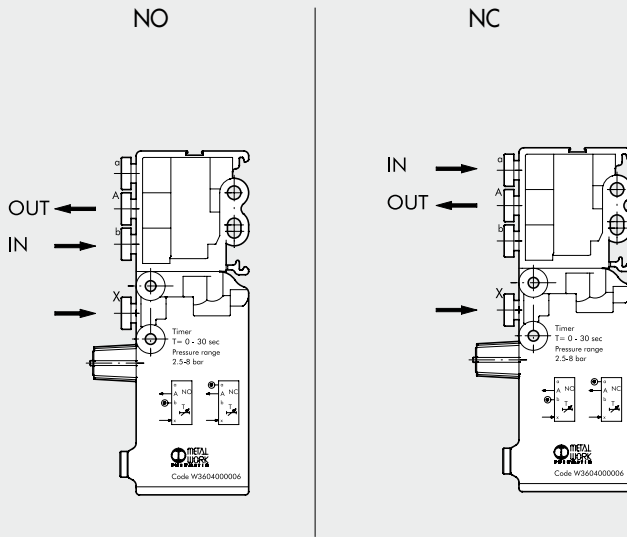
Temperature range	°F	14 to + 140
Valve coupling	mm	Push-in fitting for $\varnothing 4$ pipe ($\varnothing 5/32$)
Pressure range	psi	36.3 to 116
Nominal diameter	in	0.106
Flow rate at 6 bar (0.6 MPa, 87 psi) ΔP 1 bar (0.1 MPa, 14.5 psi)	NI/min	100
	scfm	3.53
Delay setting range	s	From 0 to 30, at 87 psi
Signal shutoff time	s	< 0.1
Repeatability	s	± 0.4
Fluid		Filtered, lubricated or unlubricated compressed air. If used, must be continuous
Operating		By compressed air
Repositioning		By mechanical spring
Installation		In any direction
Assembly		On Ω bar (DIN EN 50022) size 35 x 7 or 35 x 15 mm - Wall mounting using $\varnothing 0.165$ holes
MATERIALS		
Body		Anodized aluminium / Technopolymer
Internal parts		Brass / Technopolymer
Gaskets		NBR
Spring		Spring steel

DIMENSIONS AND ORDERING CODES

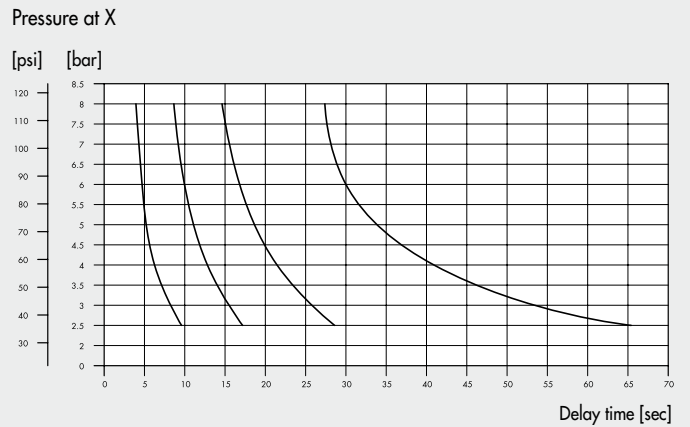
Code	Description
W3604000006	Timer



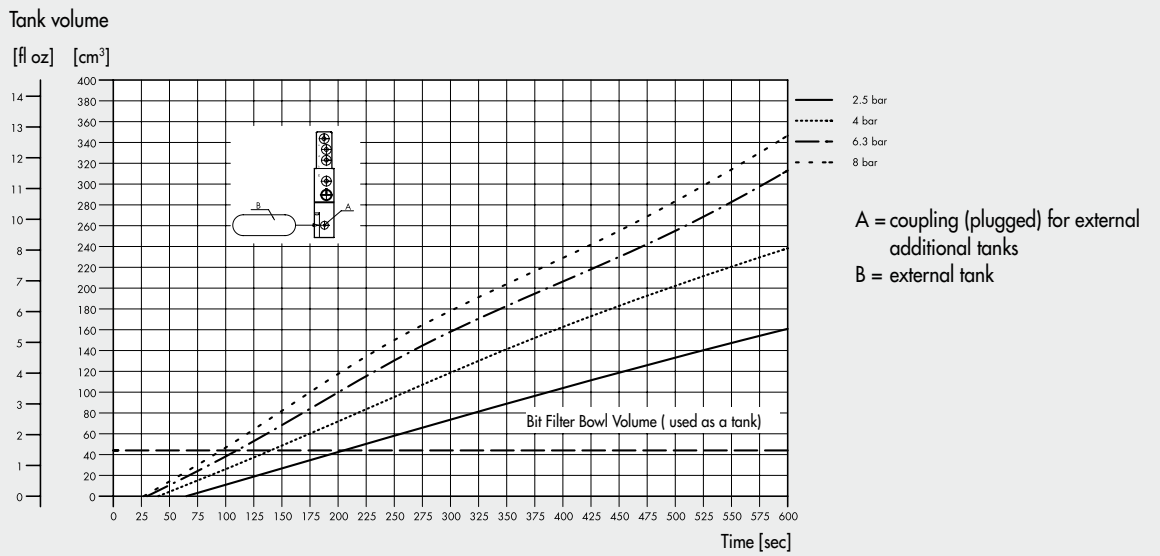
NORMALLY OPEN AND NORMALLY CLOSED OPERATION



CHANGE IN THE DELAY WITH CHANGE IN PRESSURE



HOW TO INCREASE THE DELAY



NOTES

Blank area for notes.