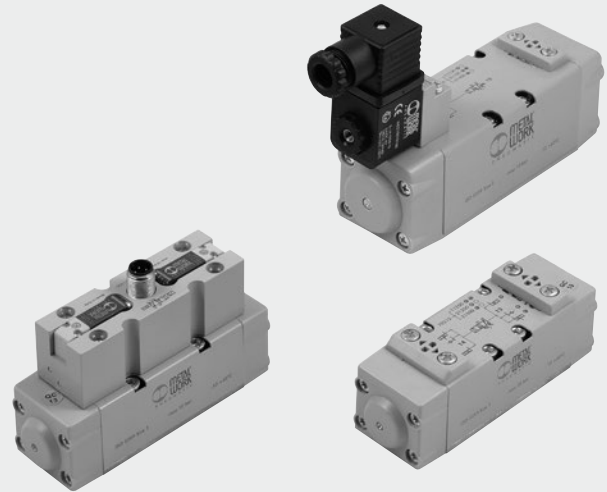


# VALVES ISO 5599/1, SERIES IPV-ISV

The assembly surface dimensions of ISO1, ISO2 and ISO3 valves are to ISO5599-1. They are available in the 5-way versions with 2 and 3 positions and with pneumatic or solenoid actuation.



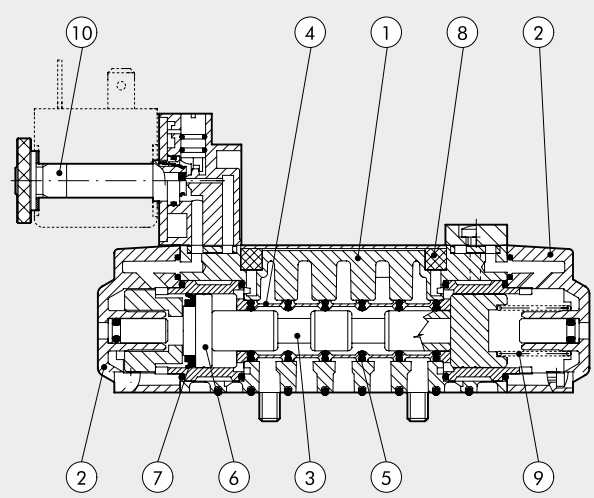
VALVES

VALVES ISO 5599/1, SERIES IPV-ISV

TECHNICAL DATA	ISO 1	ISO 2	ISO 3
Fluid	Filtered air without lubrication; lubrication, if used, must be continuous		
Operating pressure: psi	Vacuum to 145 pneumatic – 36.3 to 145 solenoid/pneumatic		
• monostable	Vacuum to 145 pneumatic – 14.5 to 145 solenoid/pneumatic		
• bistable	Vacuum to 145		
• pilot-assisted	36.3		
Minimum pilot pressure psi	14 to + 140		
Operating temperature range °F	0.30   0.47   0.59		
Nominal diameter in	0.61   1.60   2.37		
Conductance C scfm · psi	0.36   0.25   0.43		
Critical ratio b psi/psi	25   64   113		
Flow rate at 87 psi ΔP 7.25 psi scfm	39 Cv 1.1   95.5 Cv 2.7   162.7		
Flow rate at 87 psi ΔP 14.5 psi scfm	In any position (vertical assembly is not recommended for bistable valves subjected to vibration)		
Installation	On single and manifold bases according to ISO 5599/1		
Assembly	ISO and UNI FD 22		
Recommended lubricant	to CNOMO/in-line pilot / M12   to CNOMO		
Solenoid pilot	Bistable on solenoid pilot		
Manual	Monostable on valve body		
Maximum coil nut torque lbf ft	0.74		
Compatibility with oils	Please refer to page 5-4 of the technical documentation		

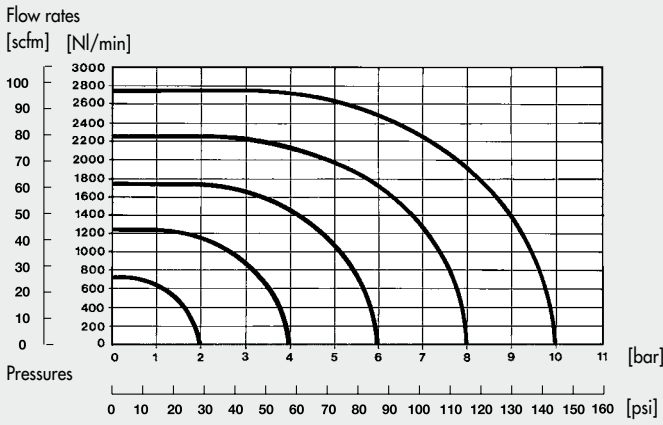
## COMPONENTS

- ① VALVE BODY: Aluminium
- ② END CAP: Hostaform®
- ③ SPOOL: chemically nickel-plated aluminium
- ④ DISTANCE PLATES: plastic
- ⑤ GASKETS: NBR
- ⑥ PISTONS: Hostaform®
- ⑦ PISTON GASKET: NBR
- ⑧ FILTER: sintered bronze
- ⑨ SPRINGS: special steel
- ⑩ OPERATOR: Brass pipe – Stainless steel core

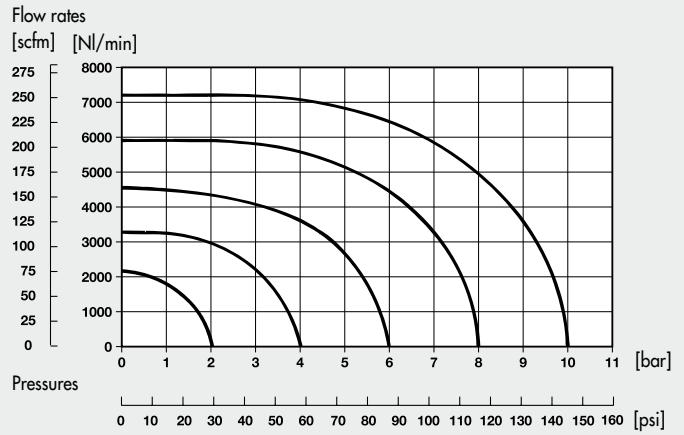


FLOW CHART

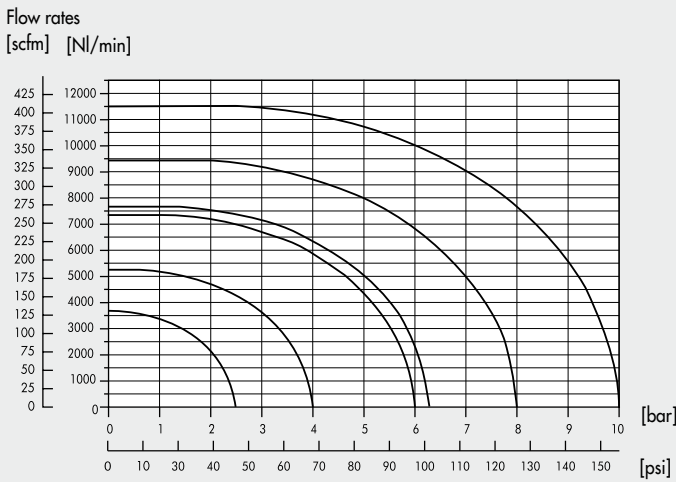
ISO 1



ISO 2



ISO 3



KEY TO CODES

I P V		5	5	P N	S	O O	U
FAMILY		DIMENSIONS	FUNCTION	OPERATORS 14	RESETTING (12)	FURTHER DETAILS	THREAD
IPV	ISO pneumatic	5 ISO 1	5 5/2	PN pneumatic	S mechanical springs	OO 5/2	U NPT
ISV	ISO solenoid/pneumatic	6 ISO 2	6 5/3	SO solenoid/pneumatic	B bistable	CC closed centres	
		7 ISO 3		SE electric pilot-assisted	D differential	OC open centres	
				* DO solenoid/pneumatic in line		PC pressure centres	
				* DE solenoid assisted in line M12			
				● CO M12 solenoid/pneumatic			
				● CE M12 solenoid assisted			

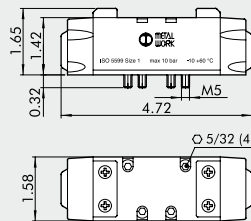
\* Only for ISO 1  
 ● Only for ISO 1 and ISO 2

# VALVES ISO 5599/1, PNEUMATIC SERIES IPV

TECHNICAL DATA		ISO 1	ISO 2	ISO 3
Operating pressure	psi	Vacuum to 145		
Minimum operation pressure:				
• monostable	psi	36.3		
• bistable	psi	14.5		
Operating temperature range	°F	14 to +140		
Nominal diameter	in	0.30	0.47	0.59
Conductance C	scfm · psi	0.61	1.60	2.37
Critical ratio b	psi/psi	0.36	0.25	0.43
Flow rate at 87 psi ΔP 7.25 psi	scfm	25	64	113
Flow rate at 87 psi ΔP 14.5 psi	scfm	39 Cv 1.1	95.5 Cv 2.7	162.7
Response times at 87 psi:				
• monostable	ms	12	24	35
• bistable	ms	20	30	45
Repositioning response times at 87 psi:				
• monostable	ms	30	43	55
• bistable	ms	20	30	45
Manual		monostable on valve body		

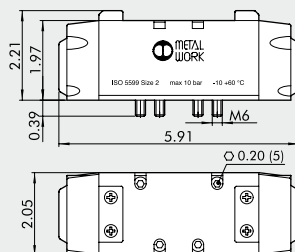


## PNEUMATIC ACTUATION ISO 1



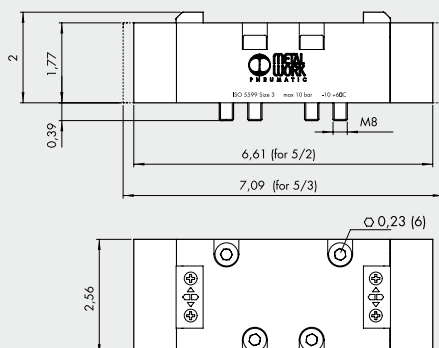
Symbol	Code	Abbrev.	Weight [lb]
	7051011100	IPV 55 PNS OO	0.684
	7051011200	IPV 55 PNB OO	0.684
	7051011300	IPV 55 PND OO	0.684
	7051012100	IPV 56 PNS CC	0.684
	7051012200	IPV 56 PNS OC	0.684
	7051012300	IPV 56 PNS PC	0.684

## PNEUMATIC ACTUATION ISO 2



Symbol	Code	Abbrev.	Weight [lb]
	7052011100	IPV 65 PNS OO	1.555
	7052011200	IPV 65 PNB OO	1.555
	7052011300	IPV 65 PND OO	1.555
	7052012100	IPV 66 PNS CC	1.555
	7052012200	IPV 66 PNS OC	1.555
	7052012300	IPV 66 PNS PC	1.555

## PNEUMATIC ACTUATION ISO 3



Symbol	Code	Abbrev.	Weight [lb]
	7056011100	IPV 75 PNS OO	2.600
	7056011200	IPV 75 PNB OO	2.600
	7056011300	IPV 75 PND OO	2.600
	7056012100	IPV 76 PNS CC	2.844
	7056012200	IPV 76 PNS OC	2.844
	7056012300	IPV 76 PNS PC	2.844

# VALVES ISO 5599/1, SOLENOID/PNEUMATIC, SERIES ISV

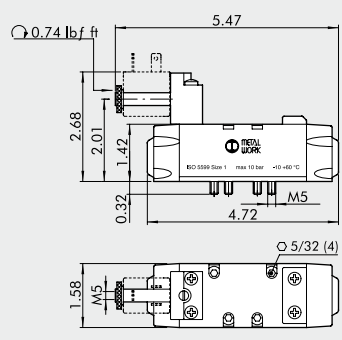
VALVES

VALVES ISO 5599/1, SERIES IPV-ISO

TECHNICAL DATA		ISO 1	ISO 2	ISO 3
Operating pressure:	psi			
• monostable			36.3 to 145	
• bistable			14.5 to 145	
• pilot-assisted			Vacuum to 145	
Minimum pilot pressure	psi		36.3	
Operating temperature range	°F		14 to +140	
Nominal diameter	in	0.30	0.47	0.59
Conductance C	scfm · psi	0.61	1.60	2.37
Critical ratio b	psi/psi	0.36	0.25	0.43
Flow rate at 87 psi ΔP 7.25 psi	scfm	25	64	113
Flow rate at 87 psi ΔP 14.5 psi	scfm	39 Cv 1.1	95.5 Cv 2.7	162.7
TRA / TRR monostable at 87 psi	ms	24 / 50	39 / 60	50 / 120
TRA / TRR bistable at 87 psi	ms	80 / 80	90 / 90	35 / 35
Solenoid pilot		Standards CNOMO		
Manual		Bistable on solenoid pilot Monostable on valve body		
Coils		1.18 in side DIN 43650 Form A – ISO 0.87 in side		
Maximum coil nut torque	lbf ft		0.74	

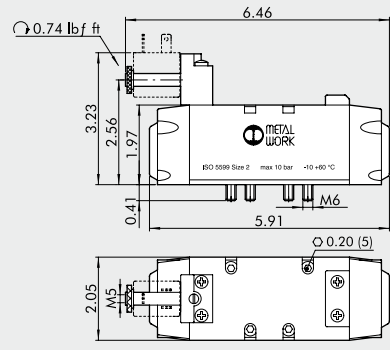


## MONOSTABLE 5/2 ISO 1



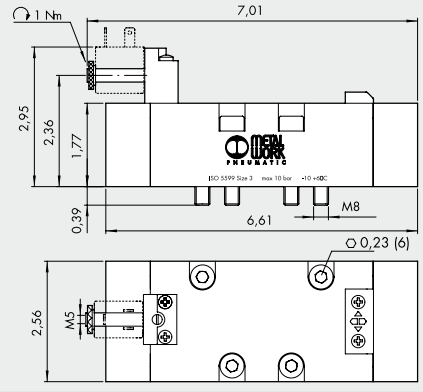
Symbol	Code	Abbrev.	Weight [lb]
	7051021100	ISV 55 SOS OO	0.759
	7051021400	ISV 55 SES OO	0.759

## MONOSTABLE 5/2 ISO 2



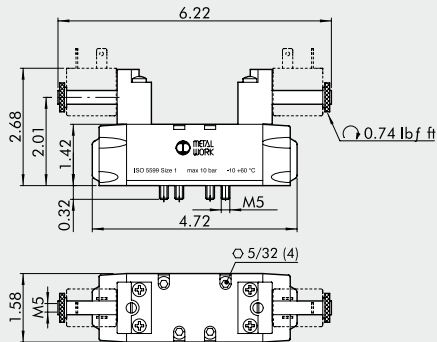
Symbol	Code	Abbrev.	Weight [lb]
	7052021100	ISV 65 SOS OO	1.577
	7052021400	ISV 65 SES OO	1.577

## MONOSTABLE 5/2 ISO 3



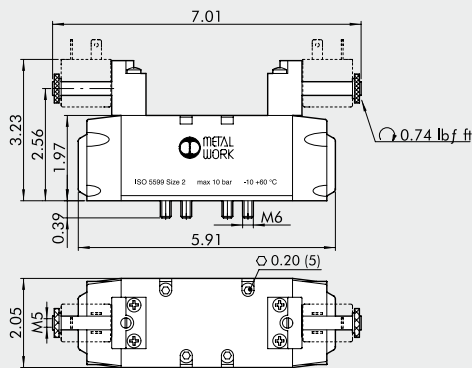
Symbol	Code	Abbrev.	Weight [lb]
	7056021100	ISV 75 SOS OO	2.661
	7056021400	ISV 75 SES OO	2.661

### BISTABLE 5/2 ISO 1 - MONOSTABLE 5/3 ISO 1



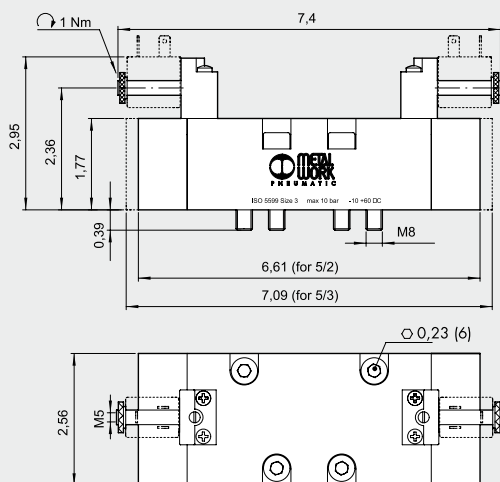
Symbol	Code	Abbrev.	Weight [lb]
	7051021200	ISV 55 SOB OO	0.856
	7051021300	ISV 55 SOD OO	0.827
	7051022100	ISV 56 SOS CC	0.820
	7051022200	ISV 56 SOS OC	0.820
	7051022300	ISV 56 SOS PC	0.820
	7051021500	ISV 55 SEB OO	0.856
	7051021600	ISV 55 SED OO	0.827
	7051022400	ISV 56 SES CC	0.820
	7051022500	ISV 56 SES OC	0.820
	7051022600	ISV 56 SES PC	0.820

### BISTABLE 5/2 ISO 2 - MONOSTABLE 5/3 ISO 2



Symbol	Code	Abbrev.	Weight [lb]
	7052021200	ISV 65 SOB OO	1.632
	7052021300	ISV 65 SOD OO	1.566
	7052022100	ISV 66 SOS CC	1.588
	7052022200	ISV 66 SOS OC	1.588
	7052022300	ISV 66 SOS PC	1.588
	7052021500	ISV 65 SEB OO	1.632
	7052021600	ISV 65 SED OO	1.566
	7052022400	ISV 66 SES CC	1.588
	7052022500	ISV 66 SES OC	1.588
	7052022600	ISV 66 SES PC	1.588

### BISTABLE 5/2 ISO 3 - MONOSTABLE 5/3 ISO 3



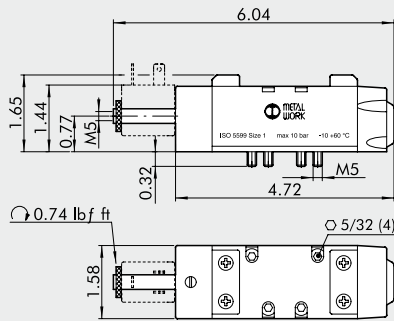
Symbol	Code	Abbrev.	Weight [lb]
	7056021200	ISV 75 SOB OO	2.712
	7056021300	ISV 75 SOD OO	2.712
	7056022100	ISV 76 SOS CC	2.987
	7056022200	ISV 76 SOS OC	2.987
	7056022300	ISV 76 SOS PC	2.987
	7056021500	ISV 75 SEB OO	2.712
	7056021600	ISV 75 SED OO	2.712
	7056022400	ISV 76 SES CC	2.987
	7056022500	ISV 76 SES OC	2.987
	7056022600	ISV 76 SES PC	2.987

# VALVES ISO 5599/1, PNEUMATIC, SERIES ISV WITH IN-LINE SOLENOID PILOT

TECHNICAL DATA		ISO 1
Operating pressure:	psi	
• monostable		36.3 to 145
• bistable		14.5 to 145
• pilot-assisted		Vacuum to 145
Minimum pilot pressure	psi	36.3
Operating temperature range	°F	14 to +140
Nominal diameter	in	0.30
Conductance C	scfm · psi	0.61
Critical ratio b	psi/psi	0.36
Flow rate at 87 psi ΔP 7.25 psi	scfm	25
Flow rate at 87 psi ΔP 14.5 psi	scfm	39 Cv 1.1
TRA / TRR monostable at 87 psi	ms	24 / 50
TRA / TRR bistable at 87 psi	ms	20 / 20
Solenoid pilot		In line pilot
Manual		Bistable on solenoid pilot
Coils		1.18 in side DIN 43650
		Form A – ISO
		0.87 in side
Maximum coil nut torque	lbf ft	0.74

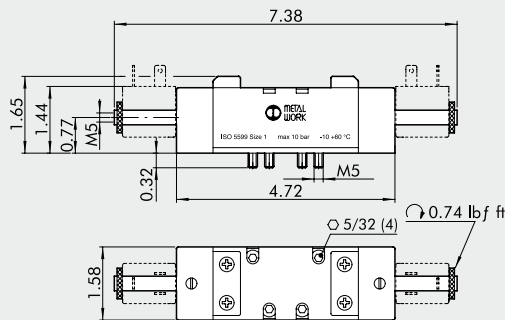


## MONOSTABLE 5/2 ISO 1



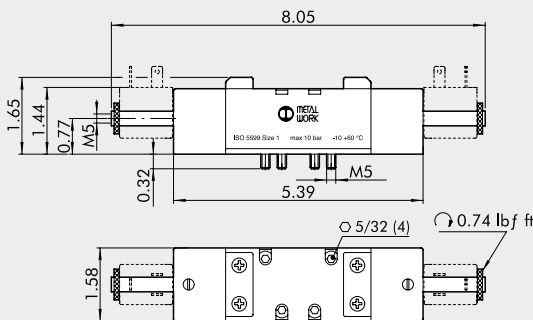
Symbol	Code	Abbrev.	Weight [lb]
	7053021100	ISV 55 DOS OO	0.873
	7053021400	ISV 55 DES OO	0.873

## BISTABLE 5/2 ISO 1



Symbol	Code	Abbrev.	Weight [lb]
	7053021200	ISV 55 DOB OO	0.992
	7053021500	ISV 55 DEB OO	0.992

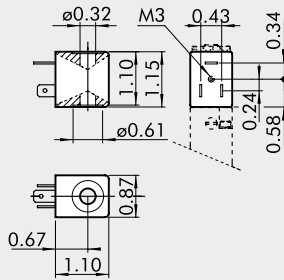
## MONOSTABLE 5/3 ISO 1



Symbol	Code	Abbrev.	Weight [lb]
	7053022100	ISV 56 DOS CC	1.140
	7053022200	ISV 56 DOS OC	1.138
	7053022300	ISV 56 DOS PC	1.138
	7053022400	ISV 56 DES CC	1.140
	7053022500	ISV 56 DES OC	1.138
	7053022600	ISV 56 DES PC	1.136

# COILS AND CONNECTORS FOR ISO 5599/1 SOLENOID VALVES SERIES ISV

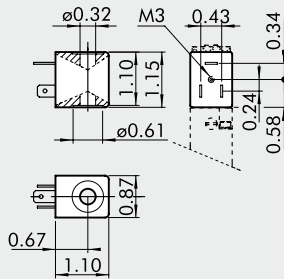
## COILS SIDE 22 mm



- Voltage tolerance: -10% to +15%
- Insulation class: F155
- Degree of protection: IP65 EN60529 with connector
- Avoid prolonged exposure to the atmospheric agents
- Coil temperature 100% ED: 131°F at 68°F – Ambient temperature
- According to Atex 94/9 CE rule, group II, category 3 GD

Code	Abbrev.	Nominal voltage	Absorption	
			Inrush	Holding
W0215000151	Coil 22 Ø 8 BA 2W-12VDC	12Vcc	2W	2W
W0215000101	Coil 22 Ø 8 BA 2W-24VDC	24Vcc	2W	2W
W0215000111	Coil 22 Ø 8 BA 3.5VA-24VAC	24V 50/60Hz	5.3VA	3.5VA
W0215000121	Coil 22 Ø 8 BA 3.5VA-110VAC	110V 50/60Hz	5.3VA	3.5VA
W0215000131	Coil 22 Ø 8 BA 3.5VA-220VAC	220V 50/60Hz	5.3VA	3.5VA

## "UL" AND "CSA" COILS 22 mm

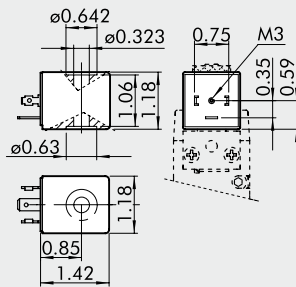


- Voltage tolerance: -10% to +15%
- Insulation class: F155
- Degree of protection: IP65 EN60529 with connector
- Avoid prolonged exposure to the atmospheric agents
- Coil temperature 100% ED: 131°F at 68°F – Ambient temperature

Code	Abbrev.	Nominal voltage	Absorption	
			Inrush	Holding
W0215000251	Coil 22 Ø 8 BA 2W-12VDC UR	12Vcc	2W	2W
W0215000201	Coil 22 Ø 8 BA 2W-24VDC UR	24Vcc	2W	2W
W0215000211	Coil 22 Ø 8 BA 3.5VA-24VAC UR	24V 50/60Hz	5.3VA	3.5VA
W0215000221	Coil 22 Ø 8 BA 3.5VA-110VAC UR	110V 50/60Hz	5.3VA	3.5VA
W0215000231	Coil 22 Ø 8 BA 3.5VA-220VAC UR	220V 50/60Hz	5.3VA	3.5VA



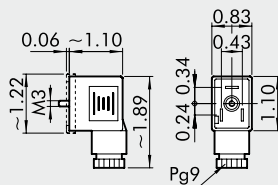
## COILS SIDE 30 mm



- Electric contact DIN43650 shape A – ISO 4400
- Voltage tolerance: -10% + 10%
- Insulation class: F155
- Degree of protection: IP65 EN60529 with connector
- Avoid prolonged exposure to the atmospheric agents
- According to Atex 94/9 CE rule, group II, category 3 GD

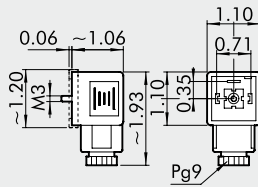
Code	Abbrev.	Nominal voltage	Absorption	
			Inrush	Holding
W0210010100	Coil 30 Ø 8 2W-24VDC	24Vcc	5W	2W
W0210011100	Coil 30 Ø 8 3.5VA-24VAC	24V 50/60Hz	10VA	3.5VA
W0210012100	Coil 30 Ø 8 3.5VA-110VAC	110V 50/60Hz	10VA	3.5VA
W0210013100	Coil 30 Ø 8 3.5VA-220VAC	220V 50/60Hz	10VA	3.5VA

## CONNECTOR FOR COILS SIDE 22 mm



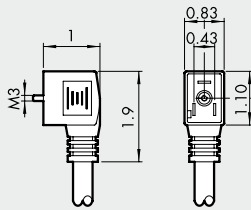
Code	Type	Colour	Ø Cable
W0970510011	Standard	Black	PG9
W0970510012	LED 24V	Transparent	PG9
W0970510013	LED 110V	Transparent	PG9
W0970510014	LED 220V	Transparent	PG9
W0970510015	LED + VDR 24V	Transparent	PG9
W0970510016	LED + VDR 110V	Transparent	PG9
W0970510017	LED + VDR 220V	Transparent	PG9
W0970510070	Atex II 2 GD	Black	PG9

## CONNECTOR FOR COILS SIDE 30 mm



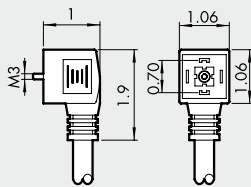
Code	Type	Colour	Ø Cable
W0970520033	Standard	Black	PG9
W0970520034	LED 24V	Transparent	PG9
W0970520035	LED 110V	Transparent	PG9
W0970520036	LED 220V	Transparent	PG9
W0970520037	LED + VDR 24V	Transparent	PG9
W0970520038	LED + VDR 110V	Transparent	PG9
W0970520039	LED + VDR 220V	Transparent	PG9

## PRE WIRED DIN CONNECTORS 6 FEET CABLE 22 mm



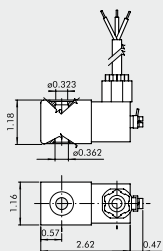
Code	Description
888776	DIN connector 110VAC led
888777	DIN connector standard black
888778	DIN connector 24VDC

## PRE WIRED DIN CONNECTORS 6 FEET CABLE 30 mm



Code	Description
888779	DIN connector standard black
888780	DIN connector led 24VDC
888781	DIN connector led 110VAC

## KIT COIL EEXM



Code	Description
0227606913	Kit for coil 30 24 VDC EEXMT5 cable 118 inch
0227606915	Kit for coil 30 24 VDC EEXMT5 cable 197 inch
0227608013	Kit for coil 30 24 VAC EEXMT5 cable 118 inch
0227608015	Kit for coil 30 24 VAC EEXMT5 cable 197 inch
0227608023	Kit for coil 30 110 VAC EEXMT5 cable 118 inch
0227608025	Kit for coil 30 110 VAC EEXMT5 cable 197 inch
0227608033	Kit for coil 30 230 VAC EEXMT5 cable 118 inch
0227608035	Kit for coil 30 230 VAC EEXMT5 cable 197 inch

According to Atex 94/9 CE rule,  
 Ⓢ II 2G Ex mb IIC T4/T5 Gb  
 Ⓢ II 2D Ex tb IIIC T130/T95 °C IP66 Db

## KIT COILS SIDE 22 IP65



Code	Description
0222100100	Kit for coil 22 - IP65

Improved IP65 protection, even after prolonged exposure to atmospheric agents.  
 Applicable to valves with a technopolymer control.



# VALVES ISO 5599/1, SOLENOID/PNEUMATIC, SERIES ISV WITH M12 CONNECTOR

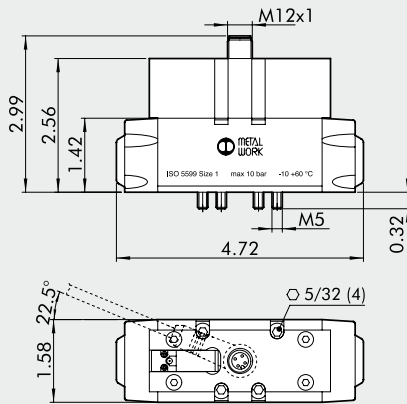


## TECHNICAL DATA

		ISO 1	ISO 2
Operating pressure:	psi		
• monostable		36.3 to 145	
• bistable		14.5 to 145	
• pilot-assisted		Vacuum to 145	
Minimum pilot pressure	psi	36.3	
Operating temperature range	°F	14 to +140	
Nominal diameter	in	0.30	0.47
Conductance C	scfm/psi	0.61	1.60
Critical ratio b	psi/psi	0.36	0.25
Flow rate at 87 psi ΔP 7.25 psi	scfm	25	64
Flow rate at 87 psi ΔP 14.5 psi	scfm	39 Cv 1.1	95.5 Cv 2.7
TRA / TRR monostable at 87 psi	ms	22 / 60	78 / 180
Solenoid pilot		With built-in coil	
Manual		Monostable on solenoid pilot Monostable on valve body	
Coil power	W	1.2	
Voltage		24 VDC ±10%	
Electrical connection		M12	
Degree of protection		IP65 EN60529	
Electrical protection		Transil	

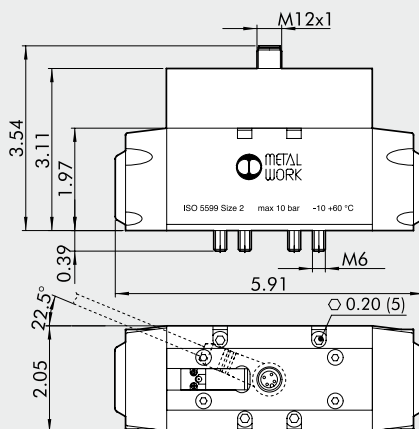


## MONOSTABLE 5/2 ISO 1



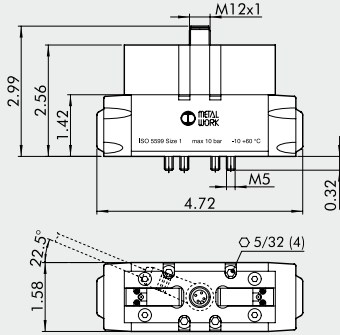
Symbol	Code	Abbrev.	Weight [lb]
	7054021100	ISV 55 COS OO	1.120
	7054021400	ISV 55 CES OO	1.120

## MONOSTABLE 5/2 ISO 2



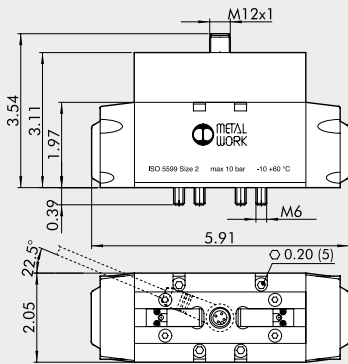
Symbol	Code	Abbrev.	Weight [lb]
	7055021100	ISV 65 COS OO	1.987
	7055021400	ISV 65 CES OO	1.987

**BISTABLE 5/2 ISO 1 - MONOSTABLE 5/3 ISO 1**



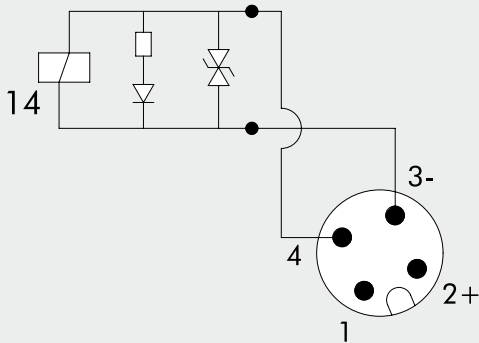
Symbol	Code	Abbrev.	Weight [lb]
	7054021200	ISV 55 COB OO	1.129
	7054021300	ISV 55 COD OO	1.081
	7054022100	ISV 56 COS CC	1.094
	7054022200	ISV 56 COS OC	1.094
	7054022300	ISV 56 COS PC	1.094
	7054021500	ISV 55 CEB OO	1.129
	7054021600	ISV 55 CED OO	1.081
	7054022400	ISV 56 CES CC	1.094
	7054022500	ISV 56 CES OC	1.094
	7054022600	ISV 56 CES PC	1.094

**BISTABLE 5/2 ISO 2 - MONOSTABLE 5/3 ISO 2**

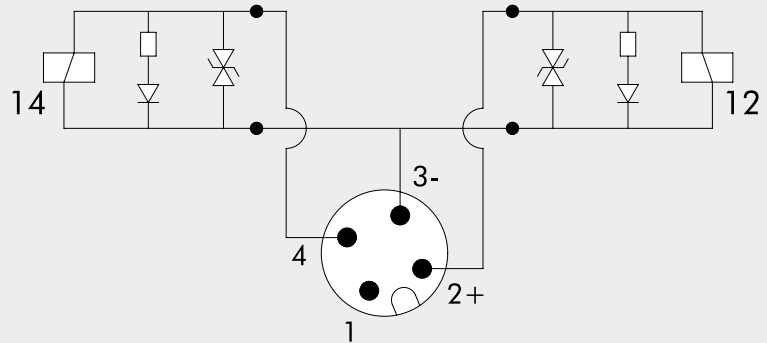


Symbol	Code	Abbrev.	Weight [lb]
	7055021200	ISV 65 COB OO	1.896
	7055021300	ISV 65 COD OO	1.896
	7055022100	ISV 66 COS CC	1.914
	7055022200	ISV 66 COS OC	1.914
	7055022300	ISV 66 COS PC	1.914
	7055021500	ISV 65 CEB OO	1.896
	7055021600	ISV 65 CED OO	1.896
	7055022400	ISV 66 CES CC	1.914
	7055022500	ISV 66 CES OC	1.914
	7055022600	ISV 66 CES PC	1.914

**WIRING DIAGRAM**

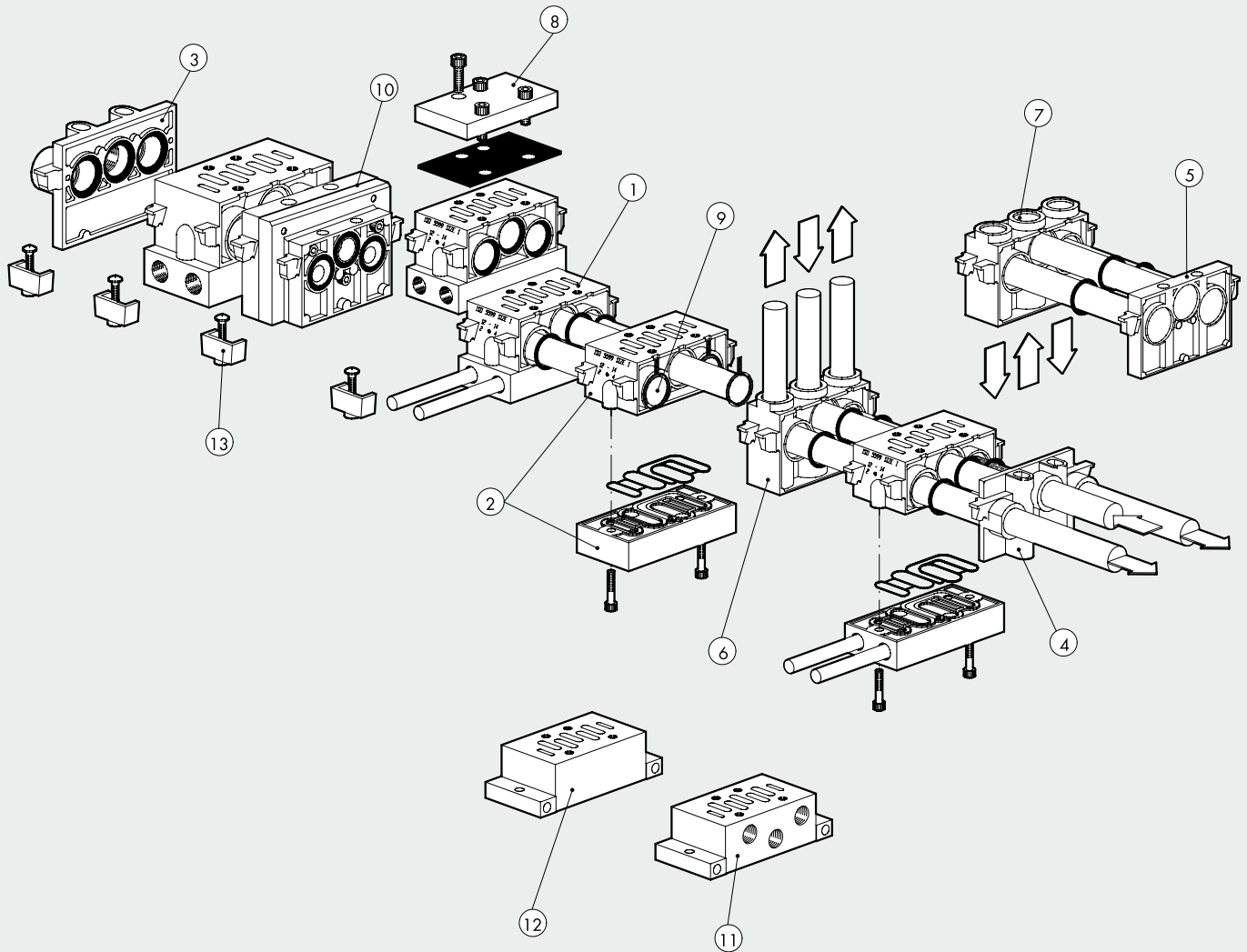


MONOSTABLE



BISTABLE

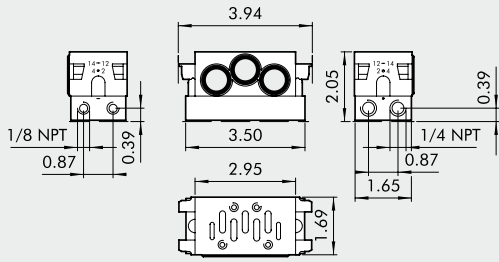
# BASES ISO 5599/1 FOR VALVES SERIES IPV-ISV



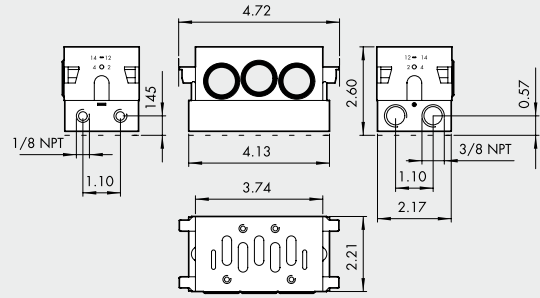
Reference	Code ISO 1	Code ISO 2	Description
①	0228000150U	0228001150U	Manifold base - side ports
②	0228000155U	0228001155U	Manifold base with bottom ports
③	0228000200U	0228001200U	Input end plate
④	0228000201U	0228001201U	Additional input end plate
⑤	0228000210	0228001210	Blind end plate
⑥	0228000300U	0228001300U	Intermediate - top ports
⑦	0228000301U	0228001301U	Intermediate - back ports
⑧	0228000500	0228001500	Blanking plate
⑨	0228000400	0228001400	Intermediate diaphragm
⑩	0228000600	-	ISO 1/ISO 2 port adapter
⑪	0228000100U	0228001100U	Individual base - side ports
⑫	0228000110U	0228001110U	Base - bottom ports
⑬	0228000700	0228001700	Assembly kit

① MANIFOLD BASE, SIDE PORTS

ISO 1



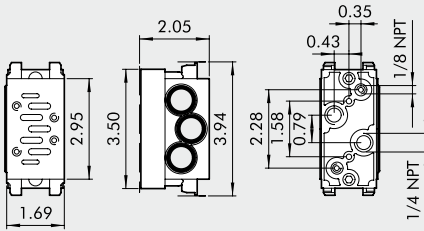
ISO 2



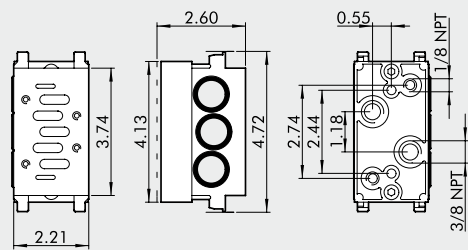
Code	Description	Weight [lb]
0228000150U	Manifold base, side ports, ISO 1	0.692
0228001150U	Manifold base, side ports, ISO 2	0.289

② MANIFOLD BASE, BOTTOM PORTS

ISO 1



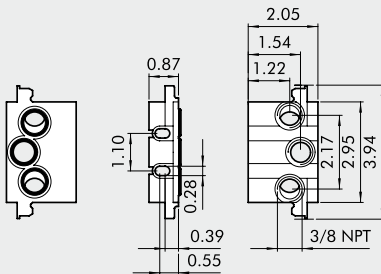
ISO 2



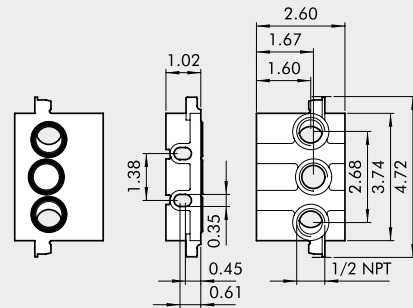
Code	Description	Weight [lb]
0228000155U	Manifold base, bottom ports, ISO 1	0.692
0228001155U	Manifold base, bottom ports, ISO 2	1.114

③ INPUT END PLATE

ISO 1



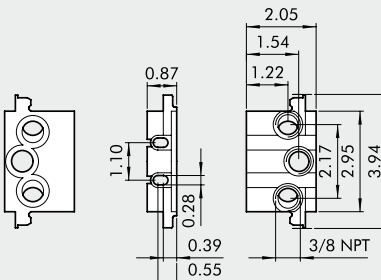
ISO 2



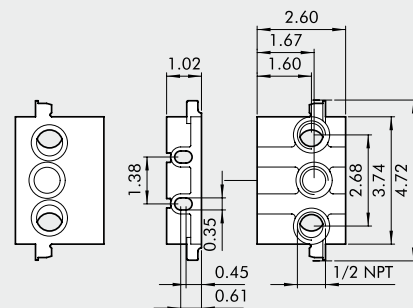
Code	Description	Weight [lb]
0228000200U	Input end plate ISO 1	0.284
0228001200U	Input end plate ISO 2	0.454

④ ADDITIONAL INPUT END PLATE

ISO 1



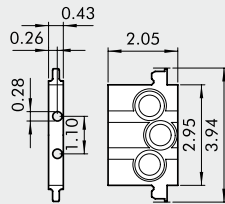
ISO 2



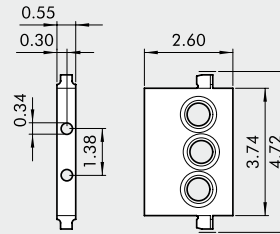
Code	Description	Weight [lb]
0228000201U	Additional input end plate, ISO 1	0.185
0228001201U	Additional input end plate, ISO 2	0.357

**5 BLIND END PLATE**

ISO 1



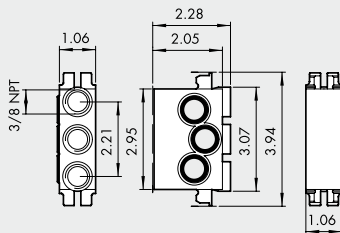
ISO 2



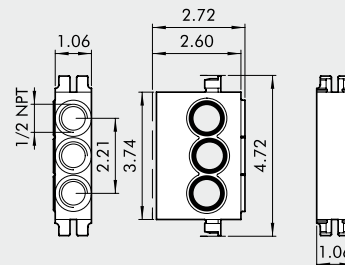
Code	Description	Weight [lb]
0228000210	Blind end plate, ISO 1	0.174
0228001210	Blind end plate, ISO 2	0.287

**6 INTERMEDIATE TOP PORTS**

ISO 1



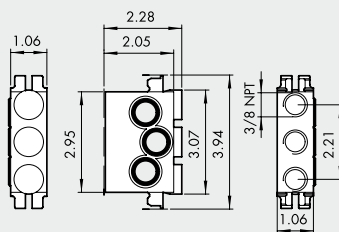
ISO 2



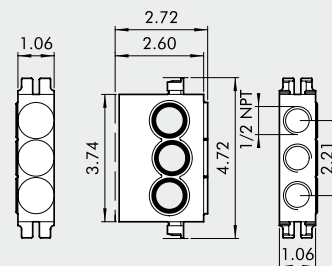
Code	Description	Weight [lb]
0228000300U	Intermediate top ports, ISO 1	0.518
0228001300U	Intermediate top ports, ISO 2	0.659

**7 INTERMEDIATE REAR PORTS**

ISO 1



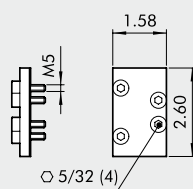
ISO 2



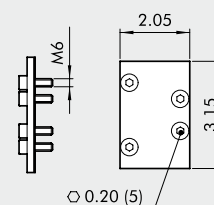
Code	Description	Weight [lb]
0228000301U	Intermediate rear ports, ISO 1	0.523
0228001301U	Intermediate rear ports, ISO 2	0.659

**8 BLANKING PLATE**

ISO 1



ISO 2



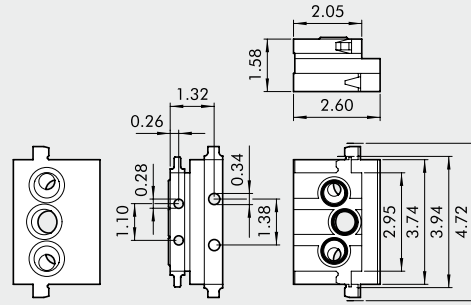
Code	Description	Weight [lb]
0228000500	Blanking plate, ISO 1	0.104
0228001500	Blanking plate, ISO 2	0.212

9 INTERMEDIATE DIAPHRAGM



Code	Description	Weight [lb]
0228000400	Intermediate diaphragm, ISO 1	0.009
0228001400	Intermediate diaphragm, ISO 2	0.015

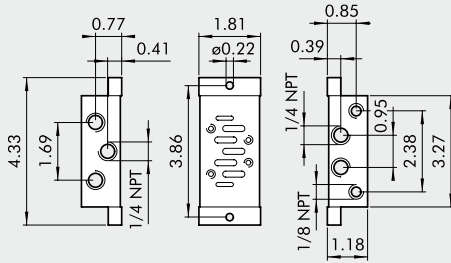
10 DIMENSION ADAPTER



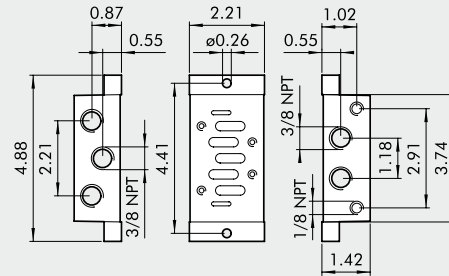
Code	Description	Weight [lb]
0228000600	Dimension adapter ISO 1-2	1.001

11 INDIVIDUAL BASE SIDE PORTS

ISO 1



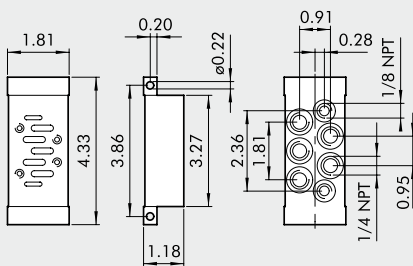
ISO 2



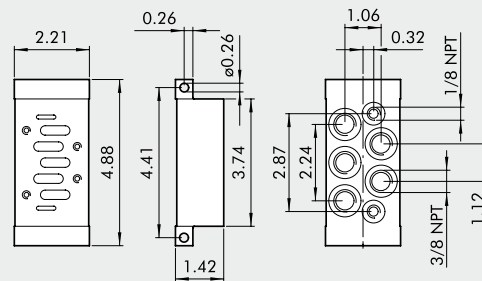
Code	Description	Weight [lb]
0228000100U	Individual base side ports, ISO 1	0.364
0228001100U	Individual base side ports, ISO 2	0.567

12 INDIVIDUAL BASE BOTTOM PORTS

ISO 1



ISO 2



Code	Description	Weight [lb]
0228000110U	Individual base bottom ports, ISO 1	0.434
0228001110U	Individual base bottom ports, ISO 2	0.670

13 ASSEMBLY KIT

ISO 1

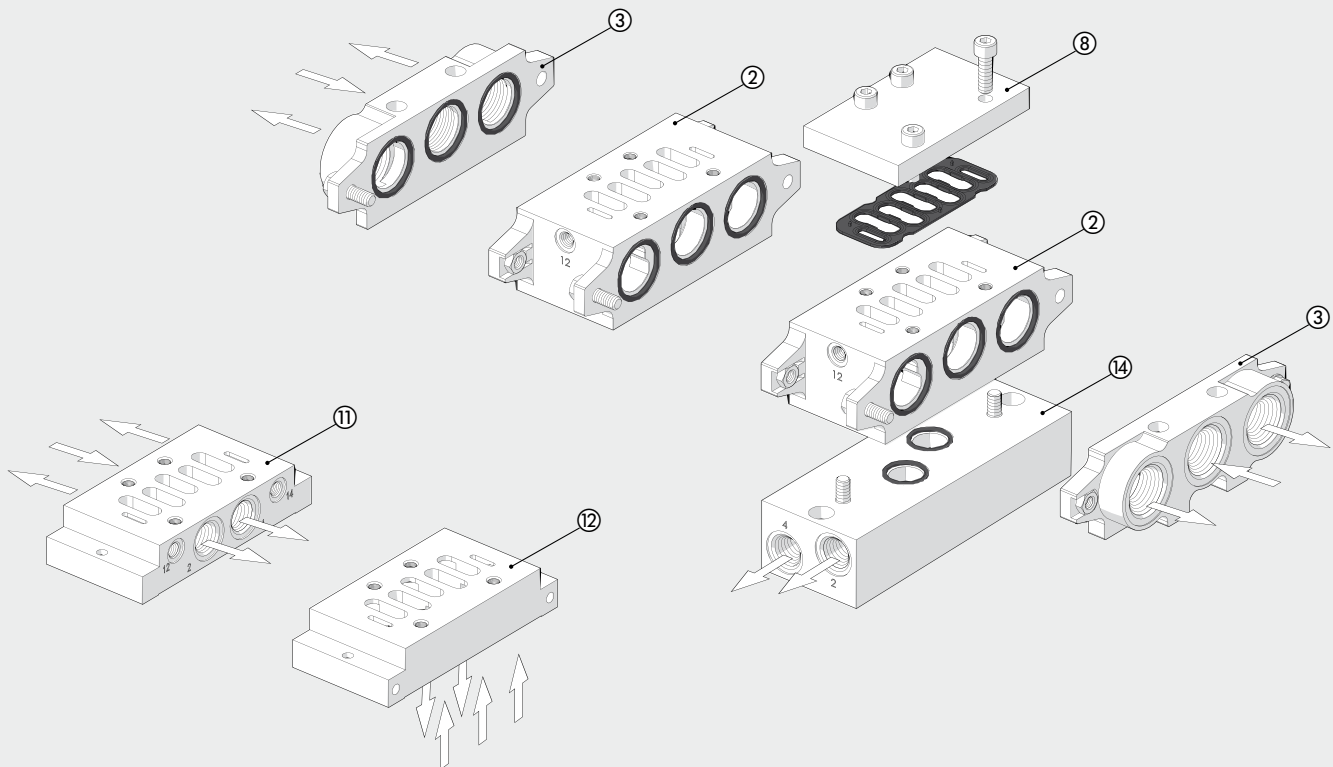


ISO 2



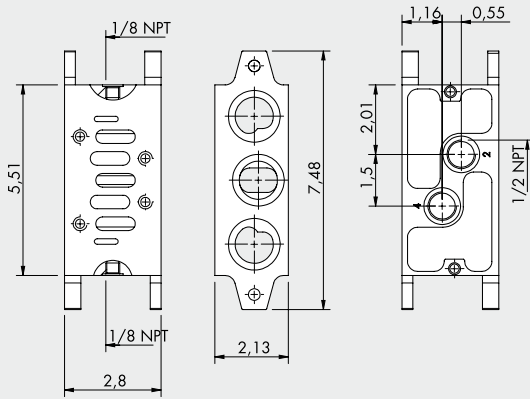
Code	Description	Weight [lb]
0228000700	Assembly kit, ISO 1	0.104
0228001700	Assembly kit, ISO 2	0.104

# BASES ISO 5599/1 FOR VALVES SERIES IPV-ISV SIZE ISO 3



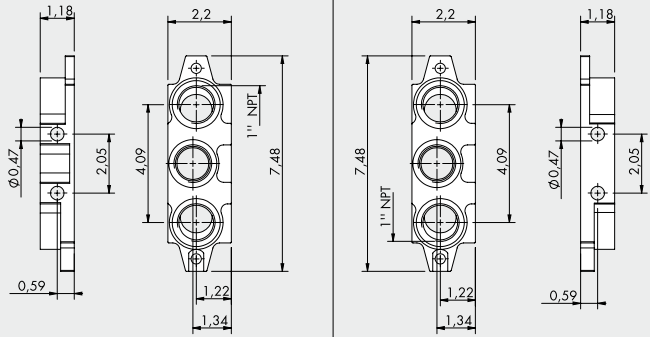
Reference	Code ISO 3	Description
②	0228002155U	Manifold base with bottom ports
③	0228002200U	Input end plate
⑧	0228002500	Blanking plate
⑪	0228002100U	Individual base - side ports
⑫	0228002110U	Base - bottom ports
⑭	0228002150U	Side interface

② MANIFOLD BASE, BOTTOM PORTS



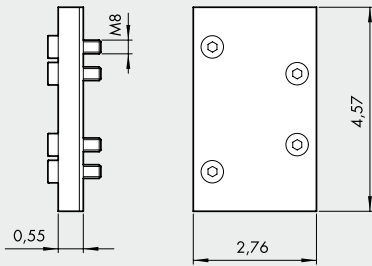
Code	Description	Weight [lb]
0228002155U	Manifold base, bottom ports, ISO 3	2.017

③ INPUT END PLATE



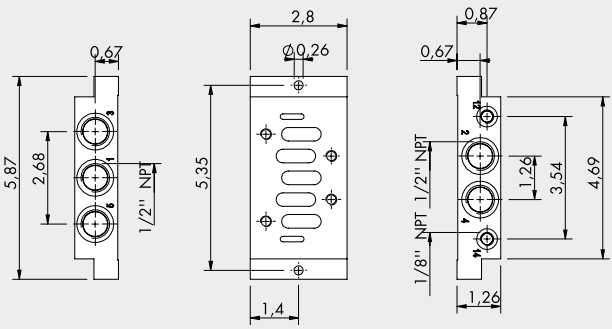
Code	Description	Weight [lb]
0228002200U	Input end plate, ISO 3	1.940

⑧ BLANKING PLATE



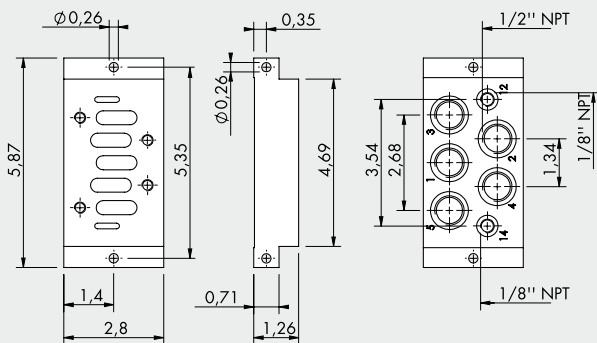
Code	Description	Weight [lb]
0228002500	Blanking plate, ISO 3	0.772

⑪ INDIVIDUAL BASE SIDE PORTS



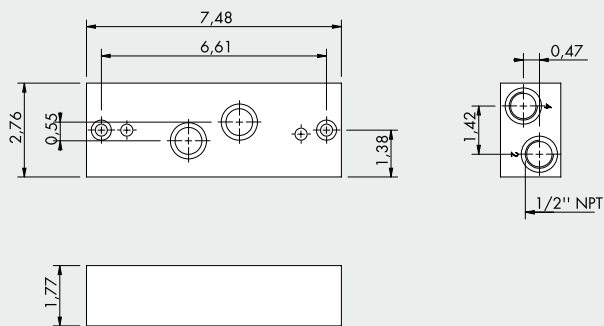
Code	Description	Weight [lb]
0228002100U	Individual base side ports, ISO 3	1.036

⑫ INDIVIDUAL BASE BOTTOM PORTS



Code	Description	Weight [lb]
0228002110U	Individual base bottom ports, ISO 3	1.446

⑭ SIDE INTERFACE



Code	Description	Weight [lb]
0228002150U	Side interface, ISO 3	3.241