

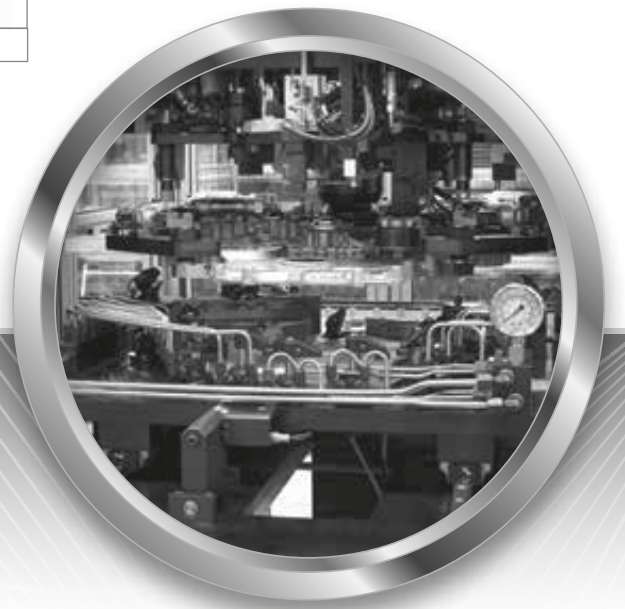
- SENSOR PROTECTION DEVICES FOR DOWNTIME REDUCTION
- QUICK-MOUNT COLLARS FOR SIMPLE TWIST-LOCK MOUNTING
- SPRING-MOUNTS TO PREVENT BREAKAGE ON CONTACT
- CONTACT PLUNGERS FOR A RELIABLE HARD STOP SWITCH
- SENSOR CAPS FOR SPATTER AND CONTACT PROTECTION
- RIGHT ANGLE, FLAT AND BLOCK MOUNTING BRACKETS

## SENSOR PROTECTION DEVICES SPECIFICATIONS

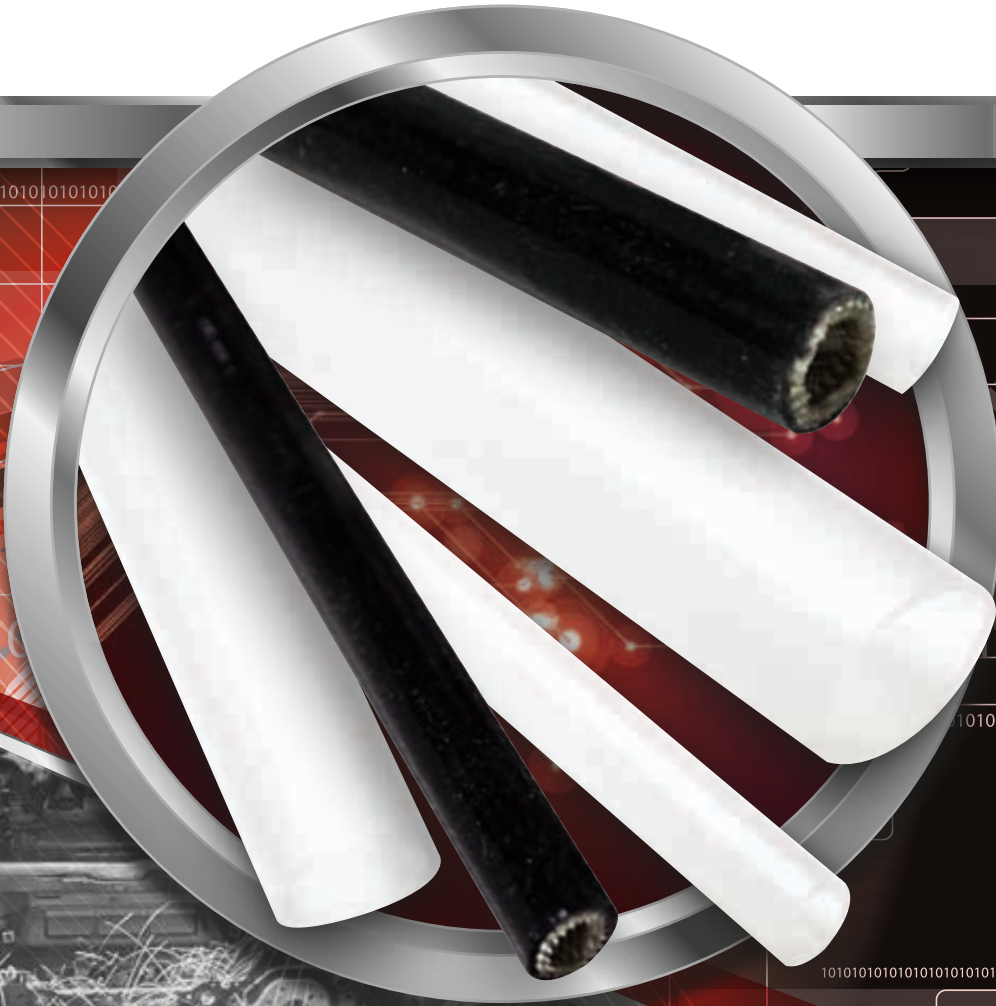
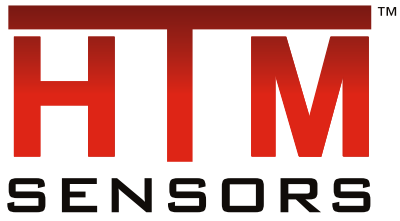
	HARD STOP CONTACT PLUNGERS	QUICK-MOUNT COLLARS	SPRING MOUNTS	PROTECTIVE FACE CAPS
M8 SENSOR	<b>HBSA-08-50-12</b>	<b>HQT-08</b>	<b>HSN-08</b>	<b>HSC-08</b>
M12 SENSOR	<b>HBSA-12-50-12</b>	<b>HQT-12</b>	<b>HSN-12</b>	<b>HSC-12</b>
M18 SENSOR	<b>HBSA-18-50-12</b>	<b>HQT-18</b>	<b>HSN-18</b>	<b>HSC-18</b>
M30 SENSOR	<b>HBSA-30-50-12</b>	<b>HQT-30</b>	<b>HSN-30</b>	<b>HSC-30</b>
DEVICE ACTION	The sensor threads into the back of the device. When an object contacts the front of the spring mounted plunger, the plunger bolt moves into the sensing range of the sensor providing an output.	The sensor pushes into the back of the device to the collar at the front. The sensor is held in place with a twist of the collet nut. The face is protected, and the mounting distance is assured each time.	The sensor threads into the back of the device, and a plastic cap is threaded onto the sensor face. When an object hits the cap, the sensor moves backward and the spring action returns it to the original position.	The sensor is mounted freely, or inside a mounting device. The cap is threaded onto the face of the sensor. The cap protects the face of the sensor from heat, contact damage, abrasion, and weld spatter.

	MOUNTING BRACKETS			
RIGHT ANGLE BRACKET				
	<b>HRAB-08</b>	<b>HRAB-12</b>	<b>HRAB-18</b>	<b>HRAB-30</b>
FLAT BRACKET				
	<b>HFAB-08</b>	<b>HFAB-12</b>	<b>HFAB-18</b>	<b>HFAB-30</b>
BLOCK MOUNTS				
	<b>SBM-MS12-PTFE</b>	<b>HMB</b>		

SENSOR PROTECTION DEVICES ARE CRITICAL FOR THE AGGRESSIVE ELIMINATION OF DOWNTIME, AND CAN BE BEST USED AS PART OF THE PROXWORX™ DOWNTIME REDUCTION SYSTEM.







- SILICONE TUBING AND EXPANDABLE SLEEVING FOR SENSOR AND CABLE PROTECTION
- AVAILABLE IN MANY INNER DIAMETERS
- CLEAR SILICONE TO MAINTAIN VISIBILITY TO CABLES AND SENSORS
- SILICONE RUBBER OVER FIBERGLASS BRAID SLEEVING FOR IRREGULAR SHAPED CABLES AND WIRING
- IDEAL FOR PROTECTION FROM HEAT, CUTS AND WELD SPATTER
- AVAILABLE PRE-INSTALLED ON SENSORS AND CABLE PRODUCTS

## SILICONE WELD SPATTER PROTECTION SPECIFICATIONS



CLEAR SILICONE TUBING - TEMPERATURE RATING: 500 °F / 260 °C			
PART NUMBER	INNER DIAMETER	OUTER DIAMETER	COIL LENGTH
HSCP-0375	0.375"	0.500"	100 ft.
HSCP-0500	0.500"	0.625"	50 ft.
HSCP-0625	0.625"	0.750"	50 ft.
HSCP-0750	0.750"	0.875"	50 ft.
HSCP-1000	1.000"	1.125"	50 ft.



CLEAR SILICONE TUBING AND SELF-FUSING SILICONE TAPE ARE PROVEN TO REDUCE DOWNTIME IN WELD CELLS BY PROTECTING CABLES, CONNECTORS AND SENSORS.

EXPANDABLE SLEEVING - TEMPERATURE RATING: -55 °C to +200 °C (-67 °F to 392 °F)		
PART NUMBER	INNER DIAMETER	SPOOL LENGTH
BSST-02-100	1.9 mm	100 ft.
BSST-03-100	3.0 mm	100 ft.
BSST-04-100	4.2 mm	100 ft.
BSST-06-100	5.94 mm	100 ft.
BSST-08-100	8.38 mm	100 ft.
BSST-10-100	9.52 mm	100 ft.
BSST-12-100	12.70 mm	100 ft.
BSST-16-100	15.87 mm	100 ft.



EXPANDABLE SLEEVING IS THE IDEAL SILICONE SLEEVING SOLUTION FOR A BROAD RANGE OF APPLICATIONS, ESPECIALLY THOSE REQUIRING A SNUG FIT OVER MORE IRREGULARLY SHAPED CABLE AND WIRING COMPONENTS.

