

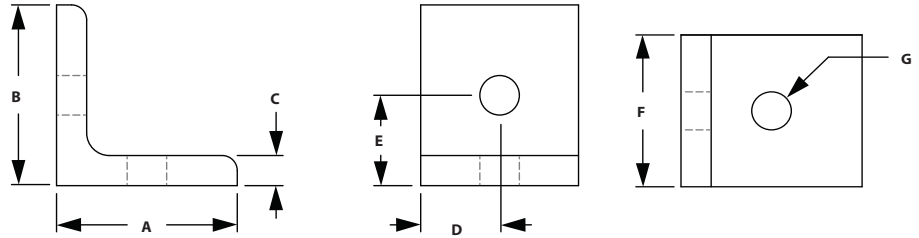
CONTENT

03 TSLOTS Brackets

Corner Brackets & Gussets	58-70
Joining Strips & Plates	71-77
Tee Joining Plates	78-80
Cross Plates	81-82
Angle Joining Plates	83-89
Transition Brackets & Strips	90-94

Fractional Brackets

2 HOLE INSIDE CORNER BRACKET

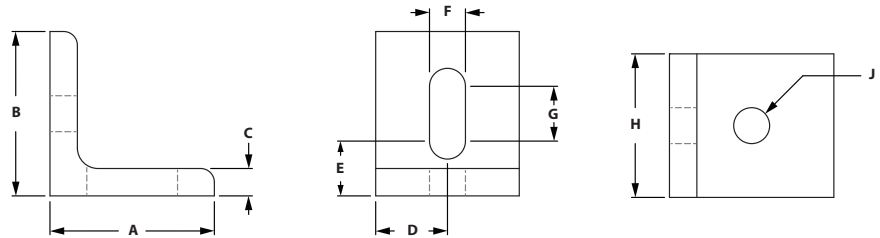


ITEM#	SERIES	FINISH	A	B	C	D	E	F	G
653047	10	Clear	1.000"	1.000"	.125"	.500"	.500"	1.000"	.257"
653056	10	Clear	1.000"	1.000"	.188"	.500"	.500"	.875"	.257"
654056	10	Black	1.000"	1.000"	.188"	.500"	.500"	.875"	.257"
653136	15	Clear	1.500"	1.500"	.250"	.750"	.750"	1.300"	.328"
654136	15	Black	1.500"	1.500"	.250"	.750"	.750"	1.300"	.328"

RECOMMENDED FASTENERS

ITEM#	BRACKET	QTY	BOLT	TNUT
651166	653047	2	1/4-20 x 3/8" FBHSCS	Economy
651171	653056 & 654056	2	1/4-20 x 1/2" BHSCS	Economy
651129	653136 & 654136	2	5/16-18 x 11/16" FBHSCS	Economy

2 HOLE SLOTTED CORNER BRACKET

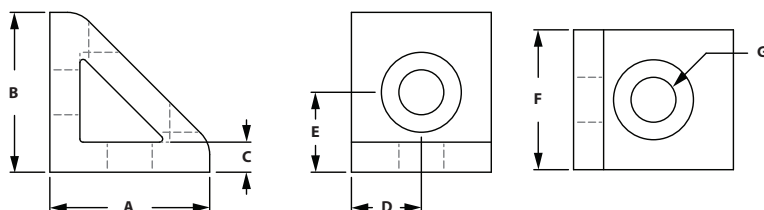


ITEM#	SERIES	FINISH	A	B	C	D	E	F	G	H	J
653126	10	Clear	1.000"	1.000"	.188"	.438"	.500"	.281"	.188"	.875"	.281"
654126	10	Black	1.000"	1.000"	.188"	.438"	.500"	.281"	.188"	.875"	.281"
653133	15	Clear	1.500"	1.500"	.250"	.655"	.500"	.328"	.500"	1.310"	.328"
654133	15	Black	1.500"	1.500"	.250"	.655"	.500"	.328"	.500"	1.310"	.328"

RECOMMENDED FASTENERS

ITEM#	SERIES	QTY	BOLT	TNUT
651171	10	2	1/4-20 x 1/2" BHSCS	Economy
651129	15	2	5/16-18 x 11/16" FBHSCS	Economy

2 HOLE INSIDE CORNER GUSSET

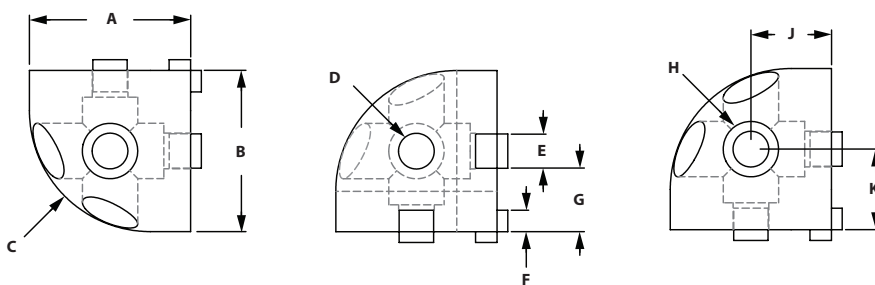


ITEM#	SERIES	FINISH	A	B	C	D	E	F	G
653069	10	Clear	1.000"	1.000"	.188"	.438"	.500"	.875"	.281"
653165	15	Clear	1.500"	1.500"	.250"	.655"	.750"	1.310"	.328"
654165	15	Black	1.500"	1.500"	.250"	.655"	.750"	1.310"	.328"

RECOMMENDED FASTENERS

ITEM#	SERIES	QTY	BOLT	TNUT
651171	10	2	1/4-20 x 1/2" BHSCS	Economy
651129	15	2	5/16-18 x 11/16" FBHSCS	Economy

ROUNDED TRI CORNER



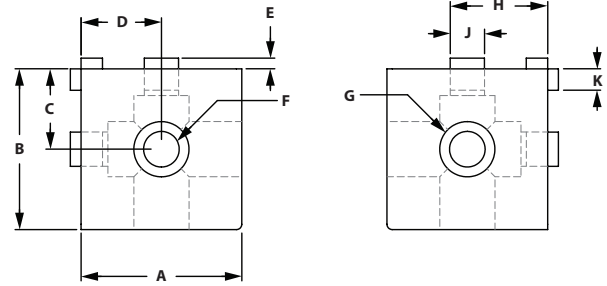
ITEM#	SERIES	FINISH	A	B	C	D	E	F	G	H	J	K
653034	10	Clear	1.000"	1.000"	.750"	.257"	.244"	.117"	.378"	.406"	.500"	.500"
653257	15	Clear	1.500"	1.500"	1.125"	.328"	.310"	.200"	.595"	.515"	.750"	.750"

RECOMMENDED FASTENERS

ITEM#	SERIES	QTY	BOLT
651003	10	3	1/4-20 x 1" LHSCS
651004	15	3	5/16-18 x 1" LSHSCS

Fractional Brackets

SQUARE TRI CORNER

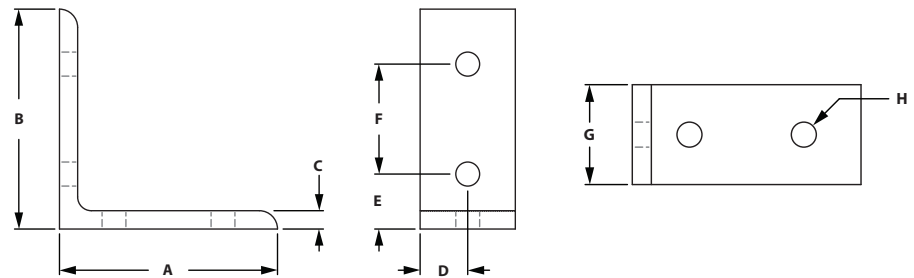


ITEM#	SERIES	FINISH	A	B	C	D	E	F	G	H	J	K
653035	10	Clear	1.000"	1.000"	.500"	.500"	.087"	.257"	.406"	.378"	.244"	.117"
653258	15	Clear	1.500"	1.500"	.750"	.750"	.110"	.328"	.515"	.595"	.310"	.200"

RECOMMENDED FASTENERS

ITEM#	SERIES	QTY	BOLT
651003	10	3	1/4-20 x 1" LHSCS
651004	15	3	5/16-18 x 1-1/4" LHSCS

4 HOLE VERTICAL INSIDE CORNER BRACKET

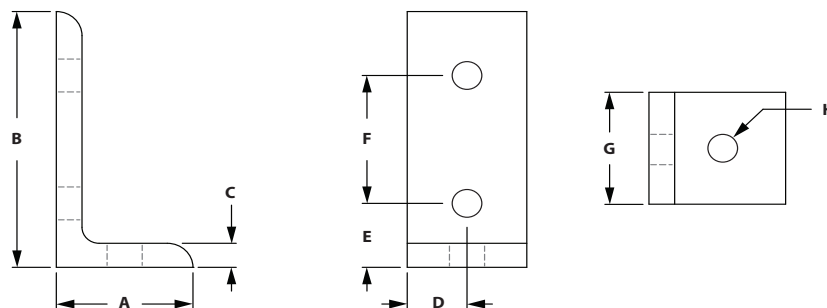


ITEM#	SERIES	FINISH	A	B	C	D	E	F	G	H
653052	10	Clear	2.000"	2.000"	.188"	.438"	.500"	1.000"	.875"	.281"
654052	10	Black	2.000"	2.000"	.188"	.438"	.500"	1.000"	.875"	.281"
653045	10	Clear	2.500"	2.500"	.188"	.438"	.750"	1.000"	.875"	.257"
653135	15	Clear	3.000"	3.000"	.250"	.655"	.750"	1.500"	1.310"	.328"
654135	15	Black	3.000"	3.000"	.250"	.655"	.750"	1.500"	1.310"	.328"

RECOMMENDED FASTENERS

ITEM#	SERIES	QTY	BOLT	TNUT
651171	10	4	1/4-20 x 1/2" BHSCS	Economy
651129	15	4	5/16-18 x 11/16" FBHSCS	Economy

3 HOLE INSIDE CORNER BRACKET

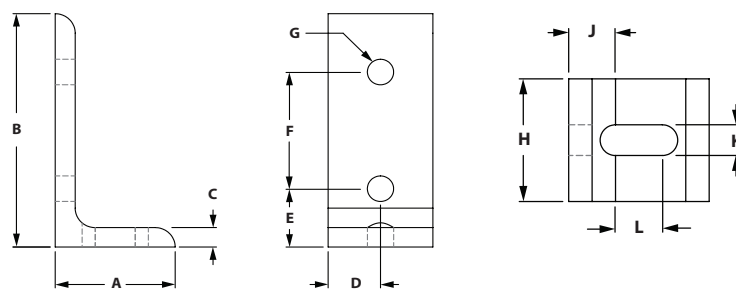


ITEM#	SERIES	FINISH	A	B	C	D	E	F	G	H
653107	10	Clear	1.000"	2.000"	.188"	.438"	.500"	1.000"	.875"	.281"
653204	15	Clear	1.500"	3.000"	.250"	.655"	.750"	1.500"	1.310"	.328"
654204	15	Black	1.500"	3.000"	.250"	.655"	.750"	1.500"	1.310"	.328"

RECOMMENDED FASTENERS

ITEM#	SERIES	QTY	BOLT	TNUT
651171	10	3	1/4-20 x 1/2" BHSCS	Economy
651129	15	3	5/16-18 x 11/16" FBHSCS	Economy

3 HOLE SLOTTED INSIDE CORNER BRACKET



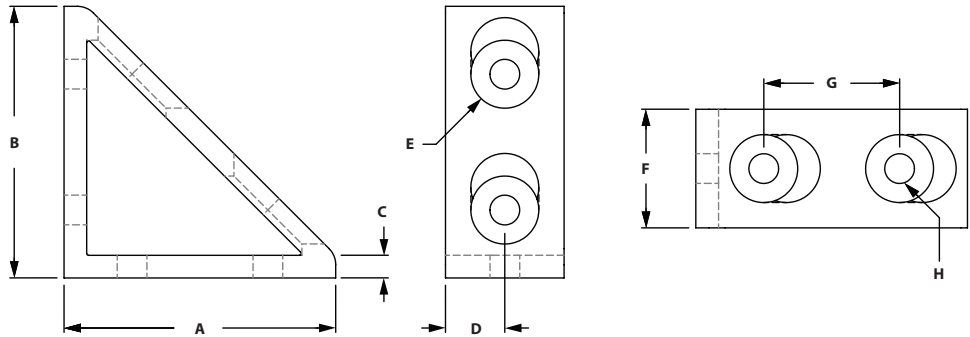
ITEM#	SERIES	FINISH	A	B	C	D	E	F	G	H	J	K	L
653123	10	Clear	1.000"	2.000"	.188"	.438"	.500"	1.000"	.281"	.875"	.500"	.281"	.188"
653128	15	Clear	1.500"	3.000"	.250"	.655"	.750"	1.500"	.328"	1.310"	.500"	.328"	.500"

RECOMMENDED FASTENERS

ITEM#	SERIES	QTY	BOLT	TNUT
651171	10	3	1/4-20 x 1/2" BHSCS	Economy
651129	15	3	5/16-18 x 11/16" FBHSCS	Economy

Fractional Brackets

4 HOLE VERTICAL INSIDE CORNER GUSSET

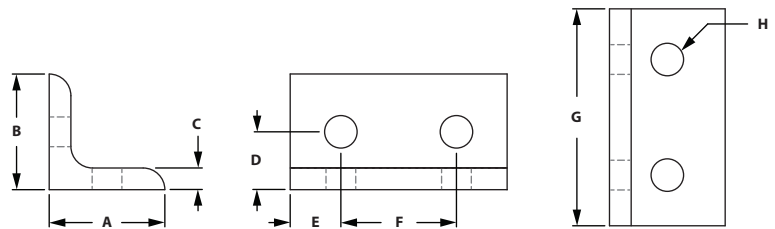


ITEM#	SERIES	FINISH	A	B	C	D	E	F	G	H
653073	10	Clear	2.000"	2.000"	.188"	.438"	.500"	.875"	1.000"	.281"
654073	10	Black	2.000"	2.000"	.188"	.438"	.500"	.875"	1.000"	.281"
653169	15	Clear	3.000"	3.000"	.250"	.655"	.750"	1.310"	1.500"	.328"
654169	15	Black	3.000"	3.000"	.250"	.655"	.750"	1.310"	1.500"	.328"

RECOMMENDED FASTENERS

ITEM#	SERIES	QTY	BOLT	TNUT
651171	10	4	1/4-20 x 1/2" BHSCS	Economy
651129	15	4	5/16-18 x 11/16" FBHSCS	Economy

4 HOLE HORIZONTAL INSIDE CORNER BRACKET

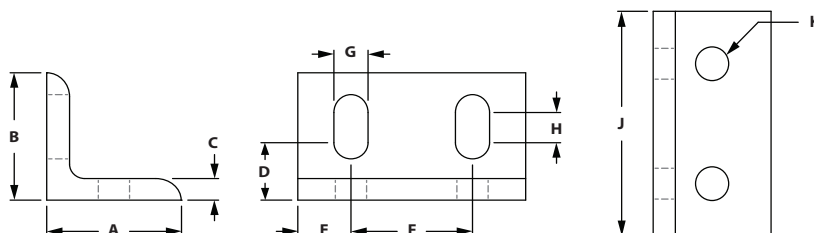


ITEM#	SERIES	FINISH	A	B	C	D	E	F	G	H
653050	10	Clear	1.000"	1.000"	.188"	.500"	.438"	1.000"	1.875"	.281"
653137	15	Clear	1.500"	1.500"	.250"	.750"	.655"	1.500"	2.810"	.328"

RECOMMENDED FASTENERS

ITEM#	SERIES	QTY	BOLT	TNUT
651171	10	4	1/4-20 x 1/2" BHSCS	Economy
651129	15	4	5/16-18 x 11/16" FBHSCS	Economy

4 HOLE HORIZONTAL SLOTTED INSIDE CORNER BRACKET

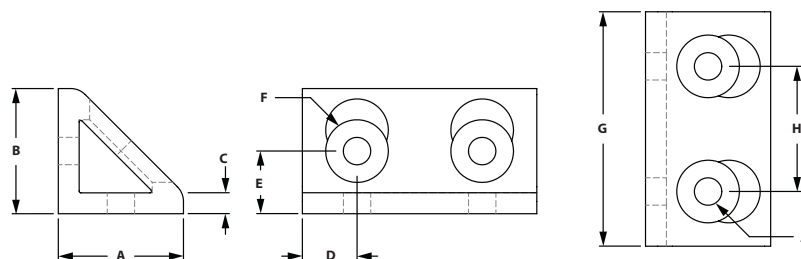
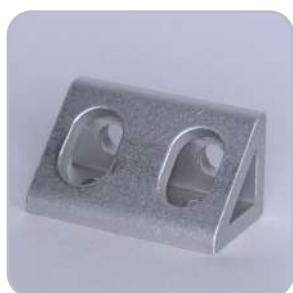


ITEM#	SERIES	FINISH	A	B	C	D	E	F	G	H	J	K
653125	10	Clear	1.000"	1.000"	.188"	.500"	.438"	1.000"	.281"	.188"	1.875"	.281"
653132	15	Clear	1.500"	1.500"	.250"	.750"	.655"	1.500"	.328"	.500"	2.810"	.328"

RECOMMENDED FASTENERS

ITEM#	SERIES	QTY	BOLT	TNUT
651171	10	4	1/4-20 x 1/2" BHSCS	Economy
651129	15	4	5/16-18 x 11/16" FBHSCS	Economy

4 HOLE HORIZONTAL INSIDE CORNER GUSSET



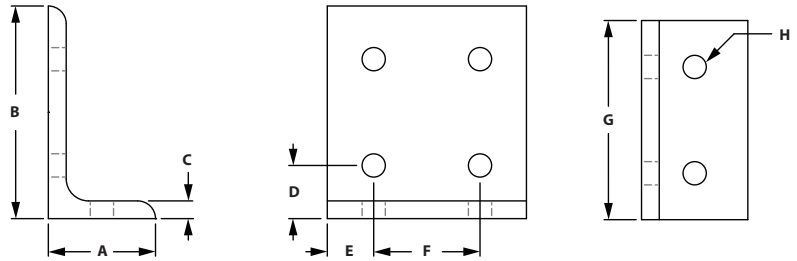
ITEM#	SERIES	FINISH	A	B	C	D	E	F	G	H	J
653071	10	Clear	1.000"	1.000"	.188"	.438"	.500"	.500"	1.875"	1.000"	.281"
653167	15	Clear	1.500"	1.500"	.250"	.655"	.750"	.750"	2.810"	1.500"	.328"
654167	15	Black	1.500"	1.500"	.250"	.655"	.750"	.750"	2.810"	1.500"	.328"

RECOMMENDED FASTENERS

ITEM#	SERIES	QTY	BOLT	TNUT
651171	10	4	1/4-20 x 1/2" BHSCS	Economy
651129	15	4	5/16-18 x 11/16" FBHSCS	Economy

Fractional Brackets

6 HOLE INSIDE CORNER BRACKET

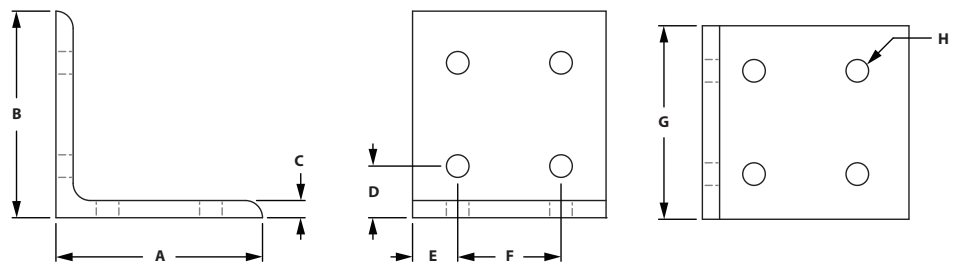


ITEM#	SERIES	FINISH	A	B	C	D	E	F	G	H
653106	10	Clear	1.000"	2.000"	.188"	.500"	.438"	1.000"	1.875"	.281"
653203	15	Clear	1.500"	3.000"	.250"	.750"	.655"	1.500"	2.810"	.328"
654203	15	Black	1.500"	3.000"	.250"	.750"	.655"	1.500"	2.810"	.328"

RECOMMENDED FASTENERS

ITEM#	SERIES	QTY	BOLT	TNUT
651171	10	6	1/4-20 x 1/2" BHSCS	Economy
651129	15	6	5/16-18 x 11/16" FBHSCS	Economy

8 HOLE VERTICAL INSIDE CORNER BRACKET

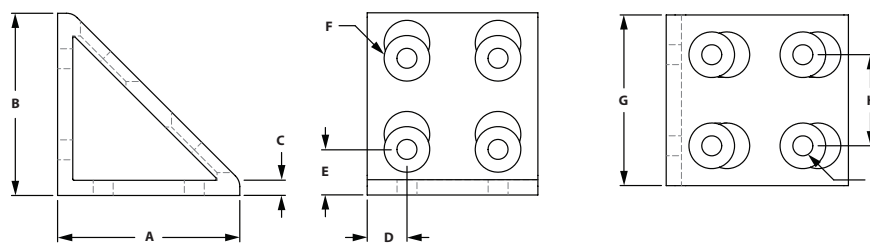


ITEM#	SERIES	FINISH	A	B	C	D	E	F	G	H
653051	10	Clear	2.000"	2.000"	.188"	.500"	.438"	1.000"	1.875"	.281"
653138	15	Clear	3.000"	3.000"	.250"	.750"	.655"	1.500"	2.810"	.328"

RECOMMENDED FASTENERS

ITEM#	SERIES	QTY	BOLT	TNUT
651171	10	8	1/4-20 x 1/2" BHSCS	Economy
651129	15	8	5/16-18 x 11/16" FBHSCS	Economy

8 HOLE VERTICAL INSIDE CORNER GUSSET

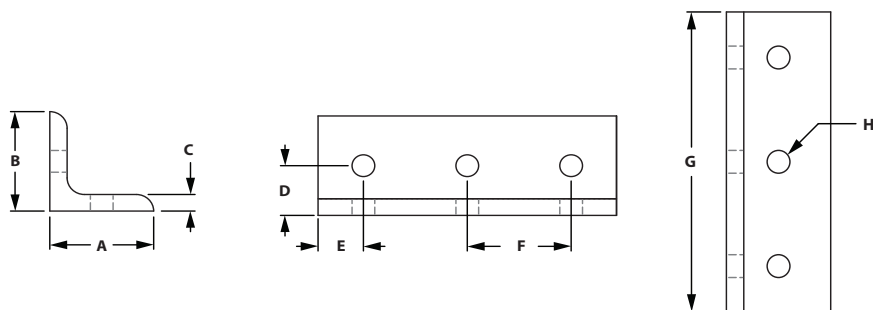


ITEM#	SERIES	FINISH	A	B	C	D	E	F	G	H	J
653075	10	Clear	2.000"	2.000"	.188"	.438"	.500"	.500"	1.875"	1.000"	.281"
654075	10	Black	2.000"	2.000"	.188"	.438"	.500"	.500"	1.875"	1.000"	.281"
653171	15	Clear	3.000"	3.000"	.250"	.655"	.750"	.750"	2.810"	1.500"	.328"
654171	15	Black	3.000"	3.000"	.250"	.655"	.750"	.750"	2.810"	1.500"	.328"

RECOMMENDED FASTENERS

ITEM#	SERIES	QTY	BOLT	TNUT
651171	10	8	1/4-20 x 1/2" BHSCS	Economy
651129	15	8	5/16-18 x 11/16" FBHSCS	Economy

6 HOLE HORIZONTAL INSIDE CORNER BRACKET



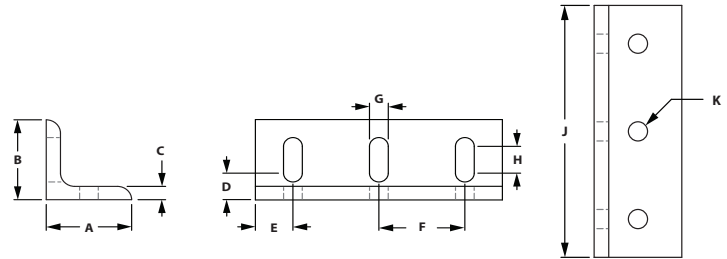
ITEM#	SERIES	FINISH	A	B	C	D	E	F	G	H
653014	10	Clear	1.000"	1.000"	.188"	.500"	.438"	1.000"	2.880"	.281"
653237	15	Clear	1.500"	1.500"	.250"	.750"	.655"	1.500"	4.310"	.328"

RECOMMENDED FASTENERS

ITEM#	SERIES	QTY	BOLT	TNUT
651171	10	6	1/4-20 x 1/2" BHSCS	Economy
651129	15	6	5/16-18 x 11/16" FBHSCS	Economy

Fractional Brackets

6 HOLE HORIZONTAL SLOTTED INSIDE CORNER BRACKET

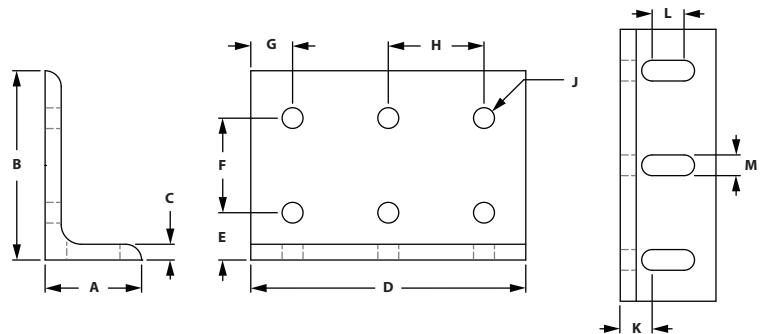


ITEM#	SERIES	FINISH	A	B	C	D	E	F	G	H	J	K
653127	10	Clear	1.000"	1.000"	.188"	.500"	.438"	1.000"	.281"	.188"	2.875"	.281"
653134	15	Clear	1.500"	1.500"	.250"	.750"	.655"	1.500"	.328"	.500"	4.310"	.328"

RECOMMENDED FASTENERS

ITEM#	SERIES	QTY	BOLT	TNUT
651171	10	6	1/4-20 x 1/2" BHSCS	Economy
651129	15	6	5/16-18 x 11/16" FBHSCS	Economy

9 HOLE SLOTTED CORNER BRACKET

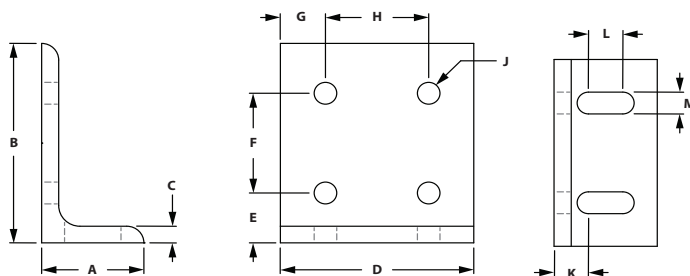


ITEM#	SERIES	FINISH	A	B	C	D	E	F	G	H	J	K	L	M
653124	10	Clear	1.000"	2.000"	.188"	2.875"	.500"	1.000"	.438"	1.000"	.281"	.500"	.188"	.281"
653129	15	Clear	1.500"	3.000"	.250"	4.310"	.750"	1.500"	.655"	1.500"	.328"	.750"	.500"	.328"

RECOMMENDED FASTENERS

ITEM#	SERIES	QTY	BOLT	TNUT
651171	10	9	1/4-20 x 1/2" BHSCS	Economy
651129	15	9	5/16-18 x 11/16" FBHSCS	Economy

6 HOLE VERTICAL SLOTTED INSIDE CORNER BRACKET

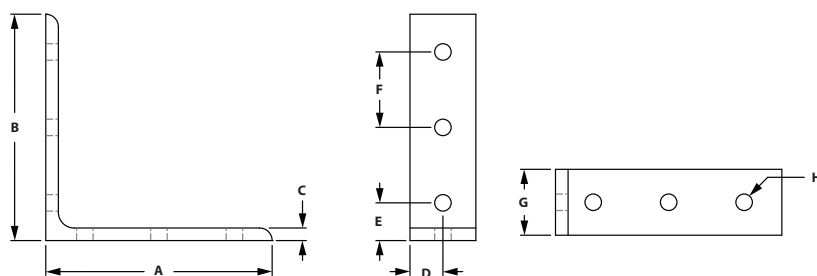


ITEM#	SERIES	FINISH	A	B	C	D	E	F	G	H	J	K	L	M
653131	10	Clear	1.000"	2.000"	.188"	1.875"	.500"	1.000"	.438"	1.000"	.281"	.500"	.188"	.281"
653130	15	Clear	1.500"	3.000"	.250"	2.810"	.750"	1.500"	.655"	1.500"	.328"	.750"	.500"	.328"

RECOMMENDED FASTENERS

ITEM#	SERIES	QTY	BOLT	TNUT
651171	10	6	1/4-20 x 1/2" BHSCS	Economy
651129	15	6	5/16-18 x 11/16" FBHSCS	Economy

6 HOLE VERTICAL INSIDE CORNER BRACKET



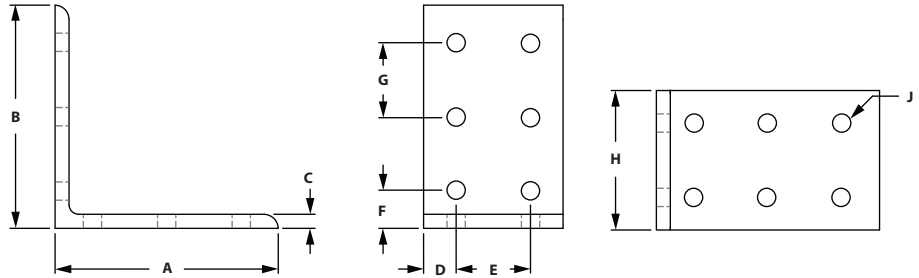
ITEM#	SERIES	FINISH	A	B	C	D	E	F	G	H
653012	10	Clear	3.000"	3.000"	.188"	.438"	.500"	1.000"	.875"	.281"
653235	15	Clear	4.500"	4.500"	.250"	.655"	.750"	1.500"	1.310"	.328"

RECOMMENDED FASTENERS

ITEM#	SERIES	QTY	BOLT	TNUT
651171	10	6	1/4-20 x 1/2" BHSCS	Economy
651129	15	6	5/16-18 x 11/16" FBHSCS	Economy

Fractional Brackets

12 HOLE VERTICAL INSIDE CORNER BRACKET

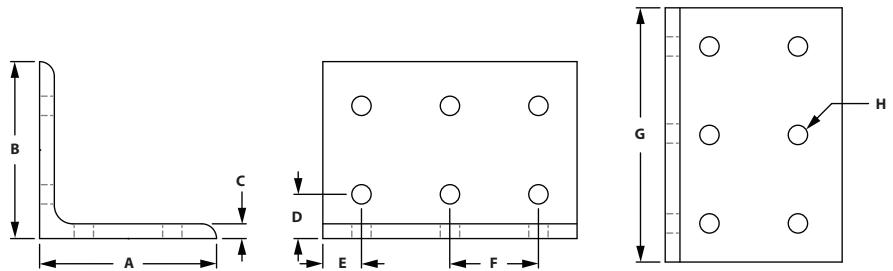


ITEM#	SERIES	FINISH	A	B	C	D	E	F	G	H	J
653013	10	Clear	3.000"	3.000"	.188"	.438"	1.000"	.500"	1.000"	1.875"	.281"
653236	15	Clear	4.500"	4.500"	.250"	.655"	1.500"	.750"	1.500"	2.812"	.328"

RECOMMENDED FASTENERS

ITEM#	SERIES	QTY	BOLT	TNUT
651171	10	12	1/4-20 x 1/2" BHSCS	Economy
651129	15	12	5/16-18 x 11/16" FBHSCS	Economy

12 HOLE HORIZONTAL INSIDE CORNER BRACKET

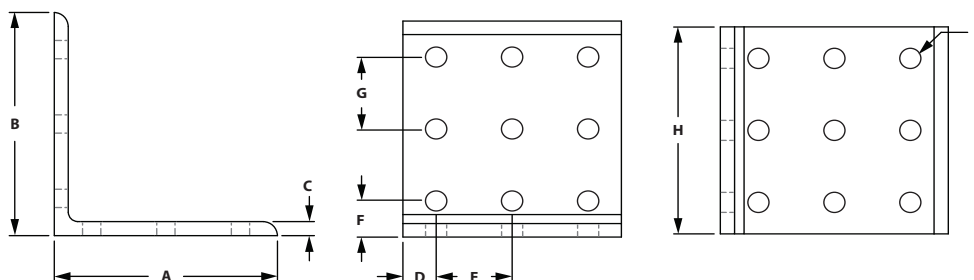


ITEM#	SERIES	FINISH	A	B	C	D	E	F	G	H
653015	10	Clear	2.000"	2.000"	.188"	.500"	.438"	1.000"	2.875"	.281"
653238	15	Clear	3.000"	3.000"	.250"	.750"	.655"	1.500"	4.310"	.328"

RECOMMENDED FASTENERS

ITEM#	SERIES	QTY	BOLT	TNUT
651171	10	12	1/4-20 x 1/2" BHSCS	Economy
651129	15	12	5/16-18 x 11/16" FBHSCS	Economy

18 HOLE INSIDE CORNER BRACKET

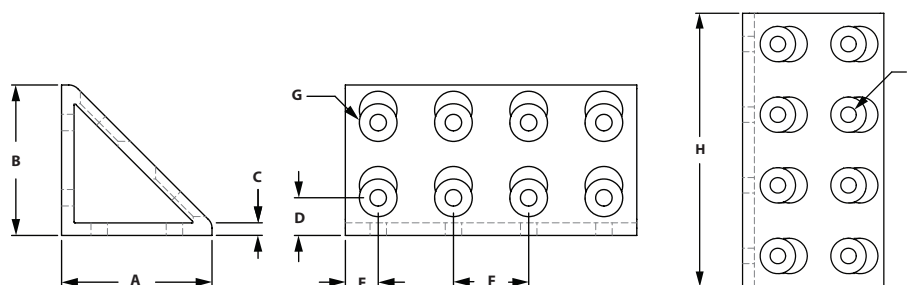


ITEM#	SERIES	FINISH	A	B	C	D	E	F	G	H	J
653016	10	Clear	3.000"	3.000"	.188"	.438"	1.000"	.500"	1.000"	2.875"	.281"
653239	15	Clear	4.500"	4.500"	.250"	.655"	1.500"	.750"	1.500"	4.310"	.328"

RECOMMENDED FASTENERS

ITEM#	SERIES	QTY	BOLT	TNUT
651171	10	18	1/4-20 x 1/2" BHSCS	Economy
651129	15	18	5/16-18 x 11/16" FBHSCS	Economy

16 HOLE INSIDE CORNER GUSSET



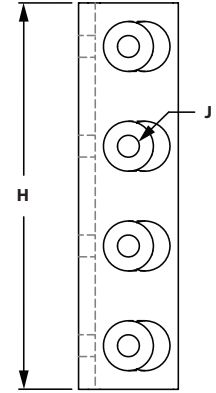
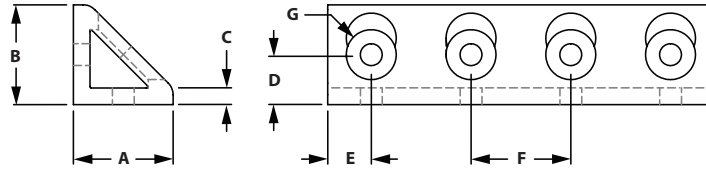
ITEM#	SERIES	FINISH	A	B	C	D	E	F	G	H	J
653292	15	Clear	3.000"	3.000"	.250"	.750"	.655"	1.500"	.750"	5.810"	.328"

RECOMMENDED FASTENERS

ITEM#	SERIES	QTY	BOLT	TNUT
651129	15	16	5/16-18 x 11/16" FBHSCS	Economy

Fractional Brackets

8 HOLE HORIZONTAL INSIDE CORNER GUSSET

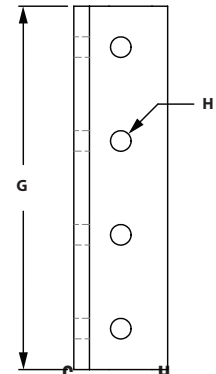
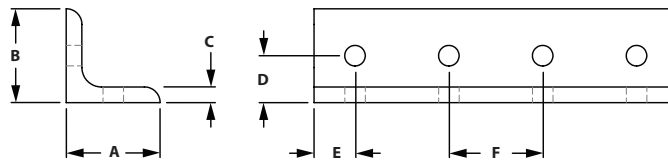


ITEM#	SERIES	FINISH	A	B	C	D	E	F	G	H	J
653293	15	Clear	1.500"	1.500"	.250"	.750"	.655"	1.500"	.750"	5.810"	.328"

RECOMMENDED FASTENERS

ITEM#	SERIES	QTY	BOLT	TNUT
651129	15	8	5/16-18 x 11/16" FBHSCS	Economy

8 HOLE HORIZONTAL INSIDE CORNER BRACKET

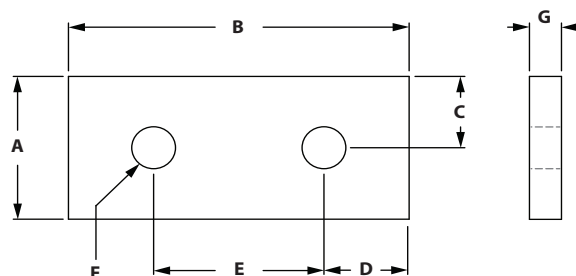


ITEM#	SERIES	FINISH	A	B	C	D	E	F	G	H
653294	15	Clear	1.500"	1.500"	.250"	.750"	.655"	1.500"	5.810"	.328"

RECOMMENDED FASTENERS

ITEM#	SERIES	QTY	BOLT	TNUT
651129	15	8	5/16-18 x 11/16" FBHSCS	Economy

2 HOLE JOINING STRIP

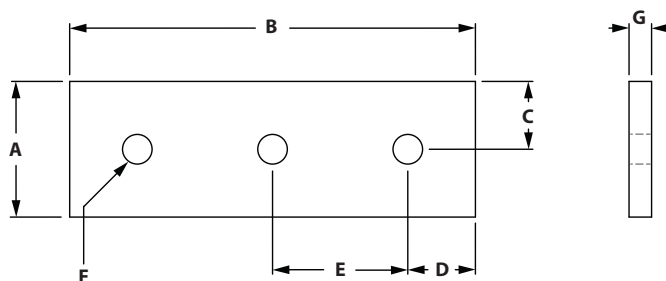


ITEM#	SERIES	FINISH	A	B	C	D	E	F	G
653046	10	Clear	.875"	2.000"	.438"	.500"	1.000"	.257"	.188"
654046	10	Black	.875"	2.000"	.438"	.500"	1.000"	.257"	.188"
653141	15	Clear	1.500"	3.000"	.750"	.750"	1.500"	.328"	.250"
654141	15	Black	1.500"	3.000"	.750"	.750"	1.500"	.328"	.250"

RECOMMENDED FASTENERS

ITEM#	SERIES	QTY	BOLT	TNUT
651171	10	2	1/4-20 x 1/2" BHSCS	Economy
651129	15	2	5/16-18 x 11/16" FBHSCS	Economy

3 HOLE JOINING STRIP



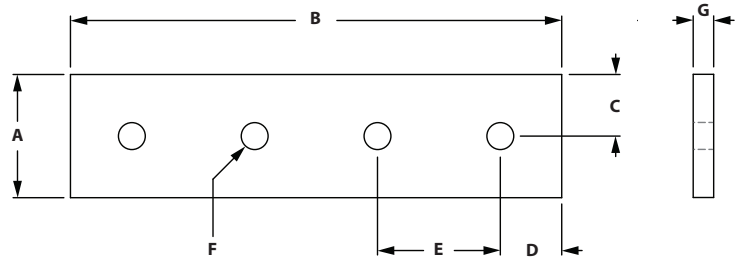
ITEM#	SERIES	FINISH	A	B	C	D	E	F	G
653055	10	Clear	.875"	3.000"	.438"	.500"	1.000"	.257"	.188"
653140	15	Clear	1.500"	4.500"	.750"	.750"	1.500"	.328"	.250"

RECOMMENDED FASTENERS

ITEM#	SERIES	QTY	BOLT	TNUT
651171	10	3	1/4-20 x 1/2" BHSCS	Economy
651129	15	3	5/16-18 x 11/16" FBHSCS	Economy

Fractional Brackets

4 HOLE JOINING STRIP

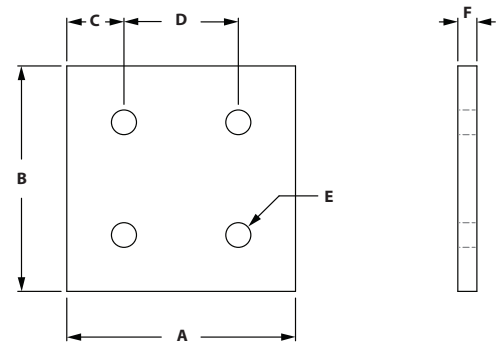


ITEM#	SERIES	FINISH	A	B	C	D	E	F	G
653054	10	Clear	.875"	4.000"	.438"	.500"	1.000"	.257"	.188"
653139	15	Clear	1.500"	6.000"	.750"	.750"	1.500"	.328"	.250"
654139	15	Black	1.500"	6.000"	.750"	.750"	1.500"	.328"	.250"

RECOMMENDED FASTENERS

ITEM#	SERIES	QTY	BOLT	TNUT
651171	10	4	1/4-20 x 1/2" BHSCS	Economy
651129	15	4	5/16-18 x 11/16" FBHSCS	Economy

4 HOLE JOINING PLATE

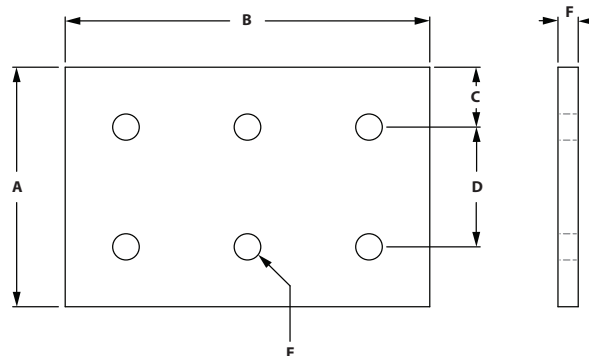


ITEM#	SERIES	FINISH	A	B	C	D	E	F
653100	10	Clear	2.000"	2.000"	.500"	1.000"	.257"	.188"
653199	15	Clear	3.000"	3.000"	.750"	1.500"	.328"	.250"
654199	15	Black	3.000"	3.000"	.750"	1.500"	.328"	.250"

RECOMMENDED FASTENERS

ITEM#	SERIES	QTY	BOLT	TNUT
651171	10	4	1/4-20 x 1/2" BHSCS	Economy
651129	15	4	5/16-18 x 11/16" FBHSCS	Economy

6 HOLE JOINING PLATE

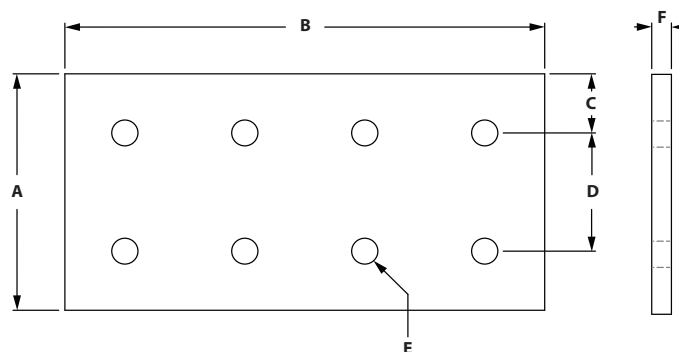


ITEM#	SERIES	FINISH	A	B	C	D	E	F
653099	10	Clear	2.000"	3.000"	.500"	1.000"	.257"	.188"
653198	15	Clear	3.000"	4.500"	.750"	1.500"	.328"	.250"

RECOMMENDED FASTENERS

ITEM#	SERIES	QTY	BOLT	TNUT
651171	10	6	1/4-20 x 1/2" BHSCS	Economy
651129	15	6	5/16-18 x 11/16" FBHSCS	Economy

8 HOLE JOINING PLATE



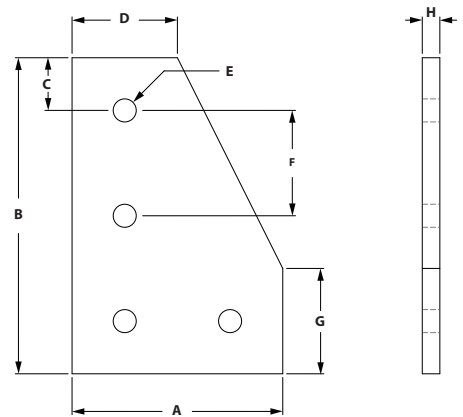
ITEM#	SERIES	FINISH	A	B	C	D	E	F
653098	10	Clear	2.000"	4.000"	.500"	1.000"	.257"	.188"
653197	15	Clear	3.000"	6.000"	.750"	1.500"	.328"	.250"
654197	15	Black	3.000"	6.000"	.750"	1.500"	.328"	.250"

RECOMMENDED FASTENERS

ITEM#	SERIES	QTY	BOLT	TNUT
651171	10	8	1/4-20 x 1/2" BHSCS	Economy
651129	15	8	5/16-18 x 11/16" FBHSCS	Economy

Fractional Brackets

4 Hole 90° Joining Plate

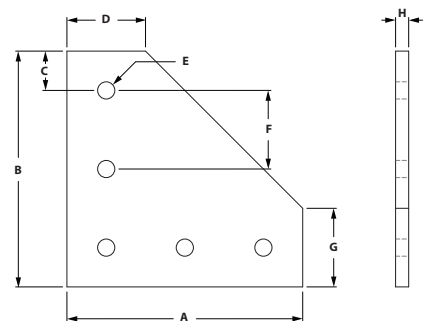


ITEM#	SERIES	FINISH	A	B	C	D	E	F	G	H
653084	10	Clear	2.000"	3.000"	.500"	1.000"	.257"	1.000"	1.000"	.188"
653182	15	Clear	3.000"	4.500"	.750"	1.500"	.328"	1.500"	1.500"	.250"

RECOMMENDED FASTENERS

ITEM#	SERIES	QTY	BOLT	TNUT
651171	10	4	1/4-20 x 1/2" BHSCS	Economy
651129	15	4	5/16-18 x 11/16" FBHSCS	Economy

5 Hole 90° Joining Plate

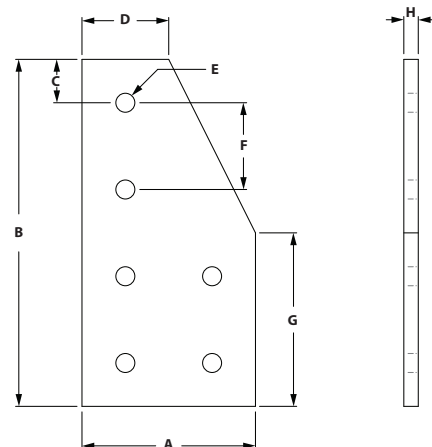


ITEM#	SERIES	FINISH	A	B	C	D	E	F	G	H
653085	10	Clear	3.000"	3.000"	.500"	1.000"	.257"	1.000"	1.000"	.188"
654085	10	Black	3.000"	3.000"	.500"	1.000"	.257"	1.000"	1.000"	.188"
653183	15	Clear	4.500"	4.500"	.750"	1.500"	.328"	1.500"	1.500"	.250"
654183	15	Black	4.500"	4.500"	.750"	1.500"	.328"	1.500"	1.500"	.250"

RECOMMENDED FASTENERS

ITEM#	SERIES	QTY	BOLT	TNUT
651171	10	5	1/4-20 x 1/2" BHSCS	Economy
651129	15	5	5/16-18 x 11/16" FBHSCS	Economy

6 Hole 90° Joining Plate

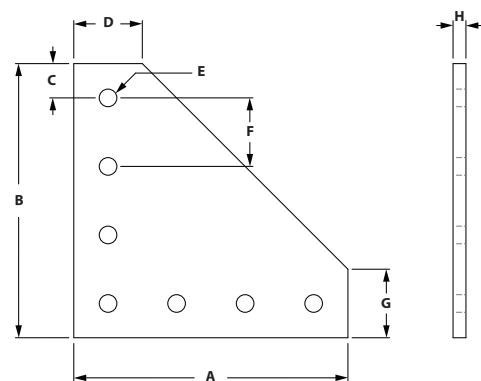


ITEM#	SERIES	FINISH	A	B	C	D	E	F	G	H
653057	10	Clear	2.000"	4.000"	.500"	1.000"	.257"	1.000"	2.000"	.188"
653153	15	Clear	3.000"	6.000"	.750"	1.500"	.328"	1.500"	3.000"	.250"

RECOMMENDED FASTENERS

ITEM#	SERIES	QTY	BOLT	TNUT
651171	10	6	1/4-20 x 1/2" BHSCS	Economy
651129	15	6	5/16-18 x 11/16" FBHSCS	Economy

7 Hole 90° Joining Plate



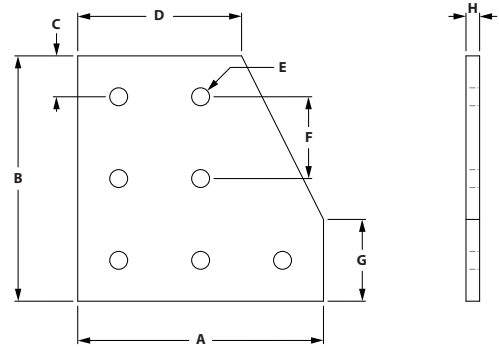
ITEM#	SERIES	FINISH	A	B	C	D	E	F	G	H
653086	10	Clear	4.000"	4.000"	.500"	1.000"	.257"	1.000"	1.000"	.188"
653184	15	Clear	6.000"	6.000"	.750"	1.500"	.328"	1.500"	1.500"	.250"

RECOMMENDED FASTENERS

ITEM#	SERIES	QTY	BOLT	TNUT
651171	10	7	1/4-20 x 1/2" BHSCS	Economy
651129	15	7	5/16-18 x 11/16" FBHSCS	Economy

Fractional Brackets

7 HOLE 90° JOINING PLATE

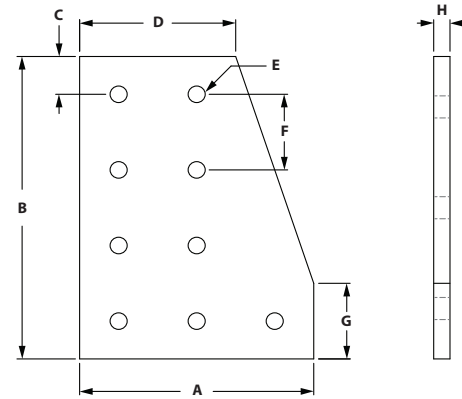


ITEM#	SERIES	FINISH	A	B	C	D	E	F	G	H
653066	10	Clear	3.000"	3.000"	.500"	2.000"	.257"	1.000"	1.000"	.188"
653162	15	Clear	4.500"	4.500"	.750"	3.000"	.328"	1.500"	1.500"	.250"

RECOMMENDED FASTENERS

ITEM#	SERIES	QTY	BOLT	TNUT
651171	10	7	1/4-20 x 1/2" BHSCS	Economy
651129	15	7	5/16-18 x 11/16" FBHSCS	Economy

9 HOLE 90° JOINING PLATE

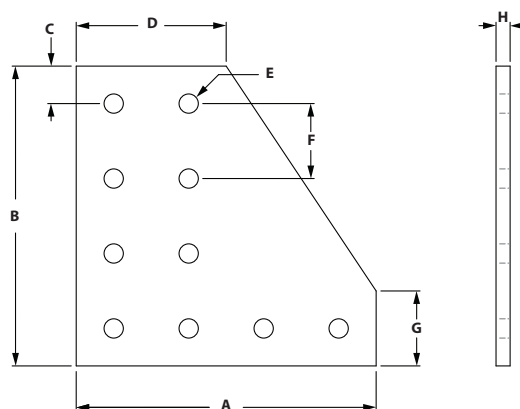


ITEM#	SERIES	FINISH	A	B	C	D	E	F	G	H
653159	15	Clear	4.500"	6.000"	.750"	3.000"	.328"	1.500"	1.500"	.250"

RECOMMENDED FASTENERS

ITEM#	SERIES	QTY	BOLT	TNUT
651129	15	9	5/16-18 x 11/16" FBHSCS	Economy

10 HOLE 90° JOINING PLATE

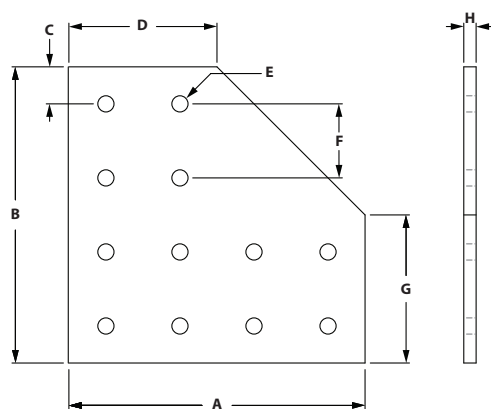


ITEM#	SERIES	FINISH	A	B	C	D	E	F	G	H
653064	10	Clear	4.000"	4.000"	.500"	2.000"	.257"	1.000"	1.000"	.188"
653160	15	Clear	6.000"	6.000"	.750"	3.000"	.328"	1.500"	1.500"	.250"

RECOMMENDED FASTENERS

ITEM#	SERIES	QTY	BOLT	TNUT
651171	10	10	1/4-20 x 1/2" BHSCS	Economy
651129	15	10	5/16-18 x 11/16" FBHSCS	Economy

12 HOLE 90° JOINING PLATE



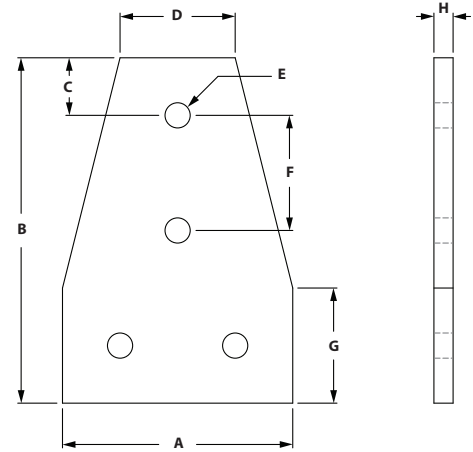
ITEM#	SERIES	FINISH	A	B	C	D	E	F	G	H
653065	10	Clear	4.000"	4.000"	.500"	2.000"	.257"	1.000"	2.000"	.188"
653161	15	Clear	6.000"	6.000"	.750"	3.000"	.328"	1.500"	3.000"	.250"
654161	15	Black	6.000"	6.000"	.750"	3.000"	.328"	1.500"	3.000"	.250"

RECOMMENDED FASTENERS

ITEM#	SERIES	QTY	BOLT	TNUT
651171	10	12	1/4-20 x 1/2" BHSCS	Economy
651129	15	12	5/16-18 x 11/16" FBHSCS	Economy

Fractional Brackets

4 HOLE TEE JOINING PLATE

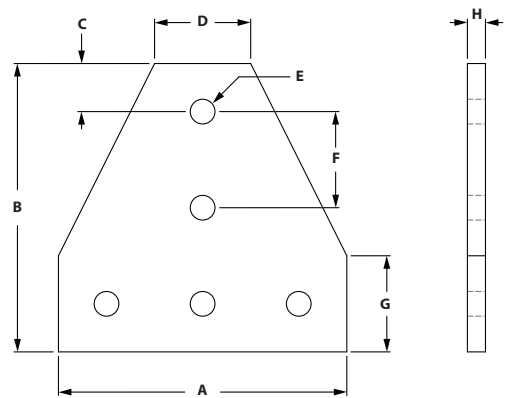


ITEM#	SERIES	FINISH	A	B	C	D	E	F	G	H
653078	10	Clear	2.000"	2.500"	.500"	1.000"	.257"	1.000"	1.000"	.188"
653174	15	Clear	3.000"	4.500"	.750"	1.500"	.328"	1.500"	1.500"	.250"
654174	15	Black	3.000"	4.500"	.750"	1.500"	.328"	1.500"	1.500"	.250"

RECOMMENDED FASTENERS

ITEM#	SERIES	QTY	BOLT	TNUT
651171	10	4	1/4-20 x 1/2" BHSCS	Economy
651129	15	4	5/16-18 x 11/16" FBHSCS	Economy

5 HOLE TEE JOINING PLATE

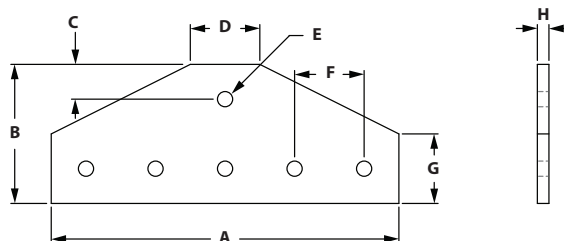


ITEM#	SERIES	FINISH	A	B	C	D	E	F	G	H
653077	10	Clear	3.000"	3.000"	.500"	1.000"	.257"	1.000"	1.000"	.188"
653173	15	Clear	4.500"	4.500"	.750"	1.500"	.328"	1.500"	1.500"	.250"

RECOMMENDED FASTENERS

ITEM#	SERIES	QTY	BOLT	TNUT
651171	10	5	1/4-20 x 1/2" BHSCS	Economy
651129	15	5	5/16-18 x 11/16" FBHSCS	Economy

6 HOLE TEE JOINING PLATE

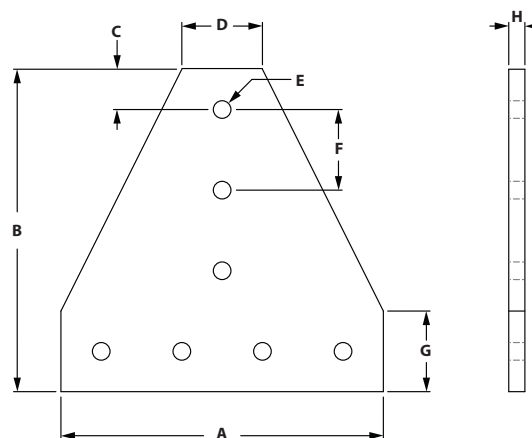


ITEM#	SERIES	FINISH	A	B	C	D	E	F	G	H
653144	15	Clear	7.500"	3.000"	.750"	1.500"	.328"	1.500"	1.500"	.250"

RECOMMENDED FASTENERS

ITEM#	SERIES	QTY	BOLT	TNUT
651129	15	6	5/16-18 x 11/16" FBHSCS	Economy

7 HOLE TEE JOINING PLATE



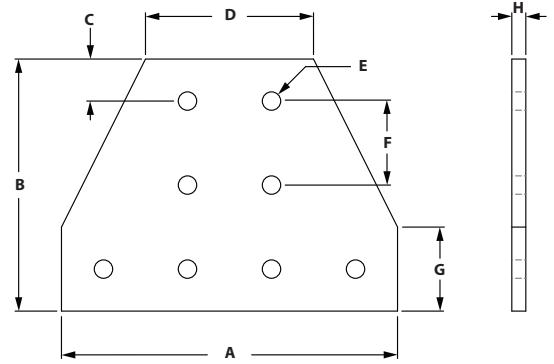
ITEM#	SERIES	FINISH	A	B	C	D	E	F	G	H
653049	10	Clear	4.000"	4.000"	.500"	1.000"	.257"	1.000"	1.000"	.188"
653146	15	Clear	6.000"	6.000"	.750"	1.500"	.328"	1.500"	1.500"	.250"

RECOMMENDED FASTENERS

ITEM#	SERIES	QTY	BOLT	TNUT
651171	10	7	1/4-20 x 1/2" BHSCS	Economy
651129	15	7	5/16-18 x 11/16" FBHSCS	Economy

Fractional Brackets

8 HOLE TEE JOINING PLATE

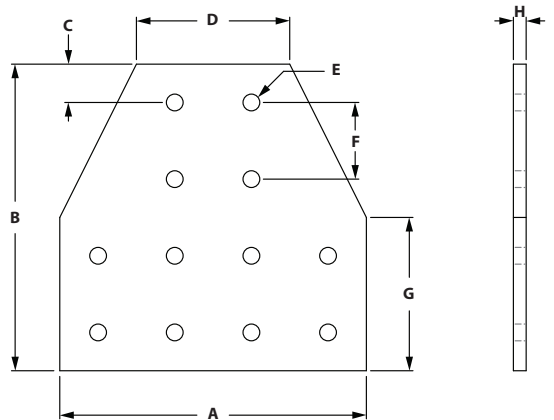


ITEM#	SERIES	FINISH	A	B	C	D	E	F	G	H
653089	10	Clear	4.000"	3.000"	.500"	2.000"	.257"	1.000"	1.000"	.188"
653187	15	Clear	6.000"	4.500"	.750"	3.000"	.328"	1.500"	1.500"	.250"

RECOMMENDED FASTENERS

ITEM#	SERIES	QTY	BOLT	TNUT
651171	10	8	1/4-20 x 1/2" BHSCS	Economy
651129	15	8	5/16-18 x 11/16" FBHSCS	Economy

12 HOLE TEE JOINING PLATE

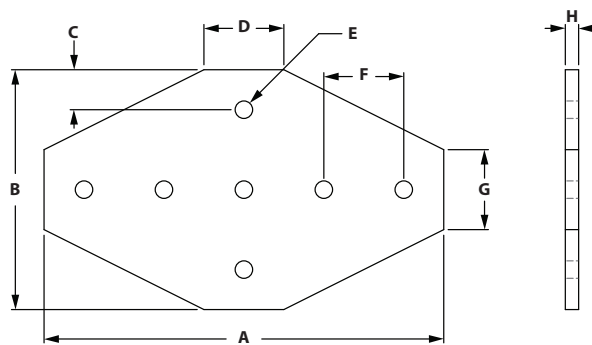


ITEM#	SERIES	FINISH	A	B	C	D	E	F	G	H
653062	10	Clear	4.000"	4.000"	.500"	2.000"	.257"	1.000"	2.000"	.188"
653158	15	Clear	6.000"	6.000"	.750"	3.000"	.328"	1.500"	3.000"	.250"
654158	15	Black	6.000"	6.000"	.750"	3.000"	.328"	1.500"	3.000"	.250"

RECOMMENDED FASTENERS

ITEM#	SERIES	QTY	BOLT	TNUT
651171	10	12	1/4-20 x 1/2" BHSCS	Economy
651129	15	12	5/16-18 x 11/16" FBHSCS	Economy

7 HOLE CROSS PLATE

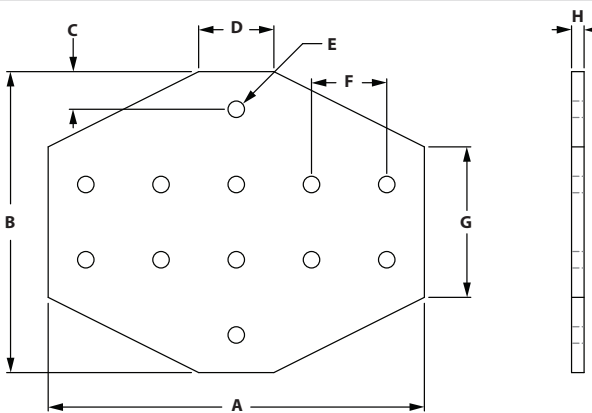


ITEM#	SERIES	FINISH	A	B	C	D	E	F	G	H
653072	10	Clear	4.500"	3.000"	.500"	1.000"	.257"	1.000"	1.000"	.188"
653168	15	Clear	7.500"	4.500"	.750"	1.500"	.328"	1.500"	1.500"	.250"

RECOMMENDED FASTENERS

ITEM#	SERIES	QTY	BOLT	TNUT
651171	10	7	1/4-20 x 1/2" BHSCS	Economy
651129	15	7	5/16-18 x 11/16" FBHSCS	Economy

12 HOLE CROSS PLATE



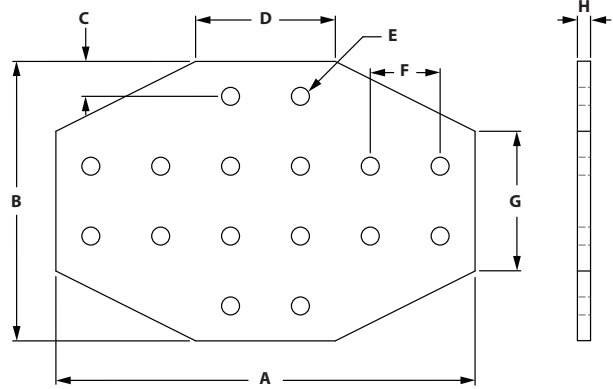
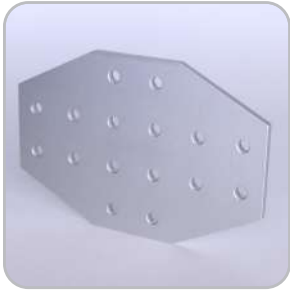
ITEM#	SERIES	FINISH	A	B	C	D	E	F	G	H
653094	10	Clear	5.000"	4.000"	.500"	1.000"	.257"	1.000"	2.000"	.188"
653192	15	Clear	7.500"	6.000"	.750"	1.500"	.328"	1.500"	3.000"	.250"

RECOMMENDED FASTENERS

ITEM#	SERIES	QTY	BOLT	TNUT
651171	10	12	1/4-20 x 1/2" BHSCS	Economy
651129	15	12	5/16-18 x 11/16" FBHSCS	Economy

Fractional Brackets

16 HOLE CROSS PLATE

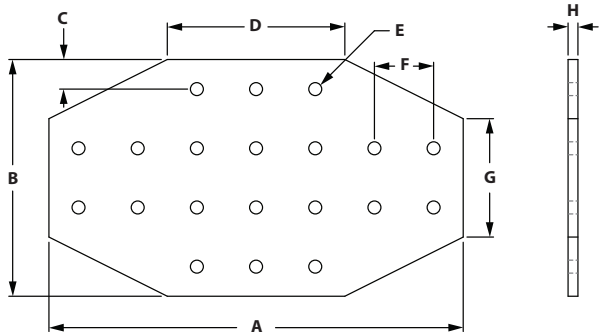
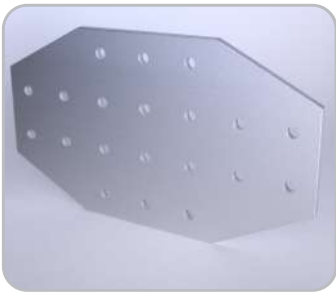


ITEM#	SERIES	FINISH	A	B	C	D	E	F	G	H
653103	10	Clear	6.000"	4.000"	.500"	2.000"	.257"	1.000"	2.000"	.188"
653200	15	Clear	9.000"	6.000"	.750"	3.000"	.328"	1.500"	3.000"	.250"
654200	15	Black	9.000"	6.000"	.750"	3.000"	.328"	1.500"	3.000"	.250"

RECOMMENDED FASTENERS

ITEM#	SERIES	QTY	BOLT	TNUT
651171	10	16	1/4-20 x 1/2" BHSCS	Economy
651129	15	16	5/16-18 x 11/16" FBHSCS	Economy

20 HOLE CROSS PLATE

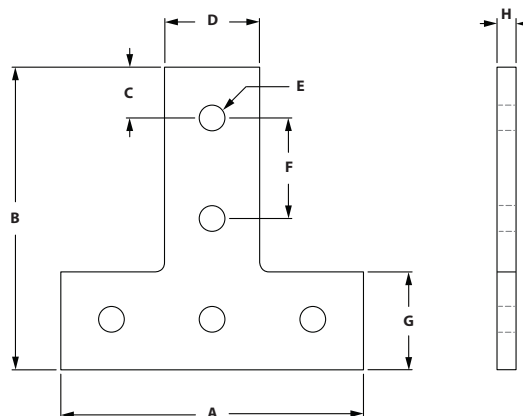


ITEM#	SERIES	FINISH	A	B	C	D	E	F	G	H
653243	15	Clear	10.500"	6.000"	.750"	4.500"	.328"	1.500"	3.000"	.250"

RECOMMENDED FASTENERS

ITEM#	SERIES	QTY	BOLT	TNUT
651129	15	20	5/16-18 x 11/16" FBHSCS	Economy

5 HOLE "T" CUT OUT

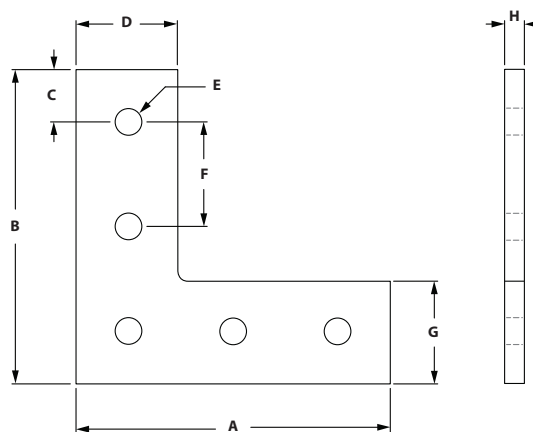


ITEM#	SERIES	FINISH	A	B	C	D	E	F	G	H
658829	15	Clear	4.500"	4.500"	.750"	1.426"	.328"	1.500"	1.463"	.250"

RECOMMENDED FASTENERS

ITEM#	SERIES	QTY	BOLT	TNUT
651129	15	5	5/16-18 x 11/16" FBHSCS	Economy

5 HOLE "L" CUT OUT



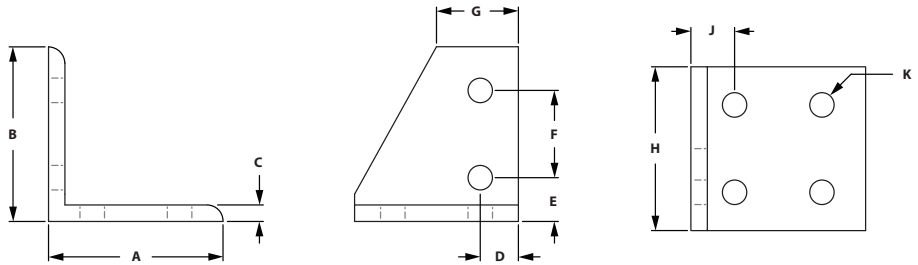
ITEM#	SERIES	FINISH	A	B	C	D	E	F	G	H
658213	10	Clear	3.000"	3.000"	.500"	.971"	.257"	1.000"	.971"	.188"
658136	15	Clear	4.500"	4.500"	.750"	1.460"	.328"	1.500"	1.460"	.250"

RECOMMENDED FASTENERS

ITEM#	SERIES	QTY	BOLT	TNUT
651171	10	5	1/4-20 x 1/2" BHSCS	Economy
651129	15	5	5/16-18 x 11/16" FBHSCS	Economy

Fractional Brackets

6 HOLE RIGHT HAND INSIDE CORNER BRACKET

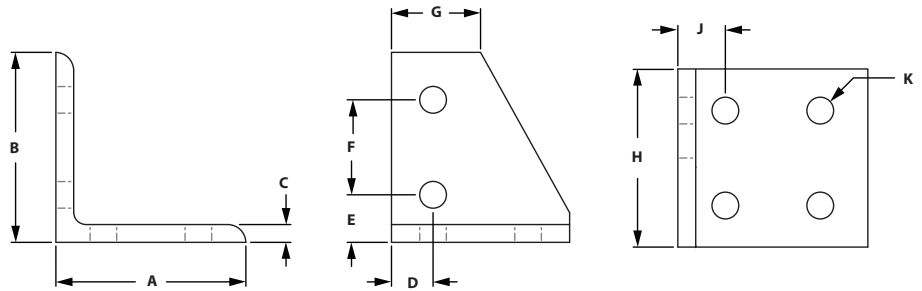


ITEM#	SERIES	FINISH	A	B	C	D	E	F	G	H	J	K
653142	15	Clear	3.000"	3.000"	.250"	.655"	.750"	1.500"	1.310"	2.810"	.750"	.328"

RECOMMENDED FASTENERS

ITEM#	SERIES	QTY	BOLT	TNUT
651129	15	6	5/16-18 x 11/16" FBHSCS	Economy

6 HOLE LEFT HAND INSIDE CORNER BRACKET

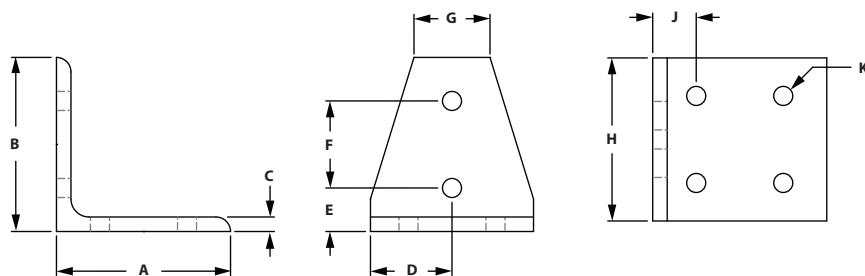


ITEM#	SERIES	FINISH	A	B	C	D	E	F	G	H	J	K
653143	15	Clear	3.000"	3.000"	.250"	.655"	.750"	1.500"	1.310"	2.810"	.750"	.328"

RECOMMENDED FASTENERS

ITEM#	SERIES	QTY	BOLT	TNUT
651129	15	6	5/16-18 x 11/16" FBHSCS	Economy

6 HOLE CENTER INSIDE CORNER BRACKET

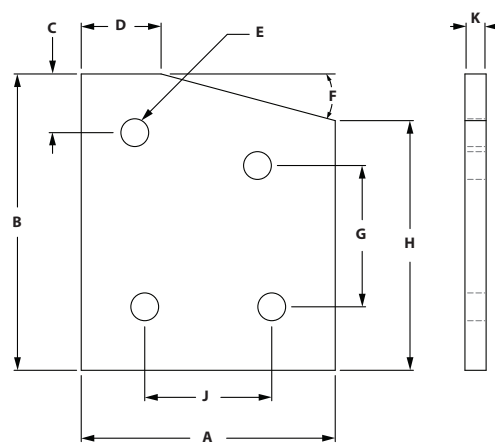


ITEM#	SERIES	FINISH	A	B	C	D	E	F	G	H	J	K
653145	15	Clear	3.000"	3.000"	.250"	1.405"	.750"	1.500"	1.310"	2.810"	.750"	.328"

RECOMMENDED FASTENERS

ITEM#	SERIES	QTY	BOLT	TNUT
651129	15	6	5/16-18 x 11/16" FBHSCS	Economy

4 HOLE 15° ANGLE JOINING PLATE



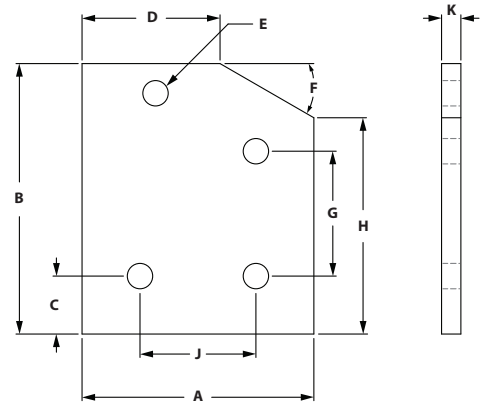
ITEM#	SERIES	FINISH	A	B	C	D	E	F	G	H	J	K
653149	15	Clear	3.000"	3.500"	.750"	.943"	.328"	15°	1.669"	2.949"	1.500"	.250"

RECOMMENDED FASTENERS

ITEM#	SERIES	QTY	BOLT	TNUT
651129	15	4	5/16-18 x 11/16" FBHSCS	Economy

Fractional Brackets

4 HOLE 30° ANGLE JOINING PLATE

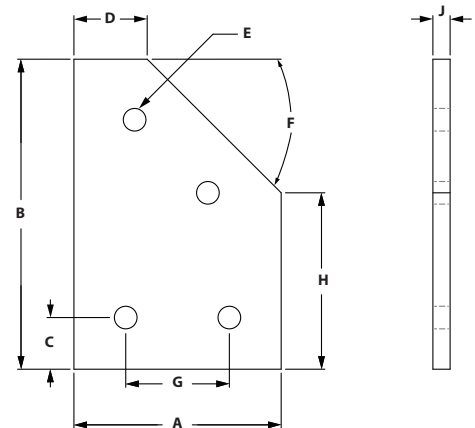


ITEM#	SERIES	FINISH	A	B	C	D	E	F	G	H	J	K
653164	15	Clear	3.000"	3.500"	.750"	1.786"	.328"	30°	1.616"	2.799"	1.500"	.250"
654164	15	Black	3.000"	3.500"	.750"	1.786"	.328"	30°	1.616"	2.799"	1.500"	.250"

RECOMMENDED FASTENERS

ITEM#	SERIES	QTY	BOLT	TNUT
651129	15	4	5/16-18 x 11/16" FBHSCS	Economy

4 HOLE 45° ANGLE JOINING PLATE

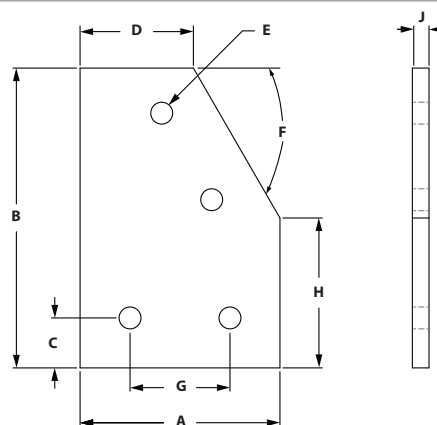


ITEM#	SERIES	FINISH	A	B	C	D	E	F	G	H	J
653178	15	Clear	3.000"	4.500"	.750"	1.061"	.328"	45°	1.500"	2.561"	.250"

RECOMMENDED FASTENERS

ITEM#	SERIES	QTY	BOLT	TNUT
651129	15	4	5/16-18 x 11/16" FBHSCS	Economy

4 HOLE 60° ANGLE JOINING PLATE

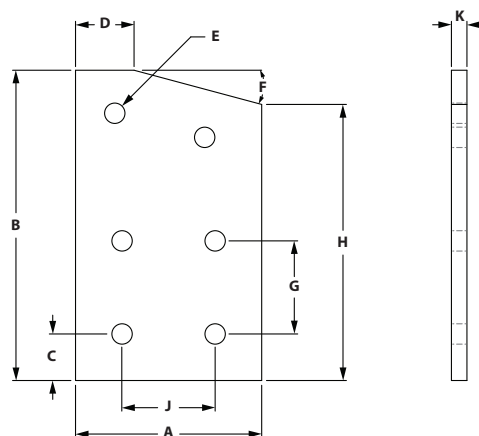


ITEM#	SERIES	FINISH	A	B	C	D	E	F	G	H	J	K
653193	15	Clear	3.000"	4.500"	.750"	1.701"	.328"	60°	1.500"	2.250"	1.500"	.250"
654193	15	Black	3.000"	4.500"	.750"	1.701"	.328"	60°	1.500"	2.250"	1.500"	.250"

RECOMMENDED FASTENERS

ITEM#	SERIES	QTY	BOLT	TNUT
651129	15	4	5/16-18 x 11/16" FBHSCS	Economy

6 HOLE 15° ANGLE JOINING PLATE



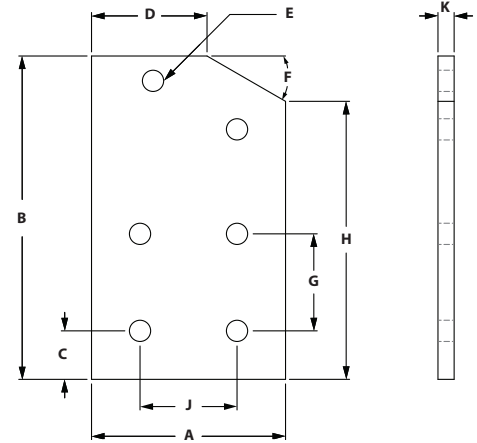
ITEM#	SERIES	FINISH	A	B	C	D	E	F	G	H	J	K
653148	15	Clear	3.000"	5.000"	.750"	.943"	.328"	15°	1.500"	4.449"	1.500"	.250"

RECOMMENDED FASTENERS

ITEM#	SERIES	QTY	BOLT	TNUT
651129	15	6	5/16-18 x 11/16" FBHSCS	Economy

Fractional Brackets

6 HOLE 30° ANGLE JOINING PLATE

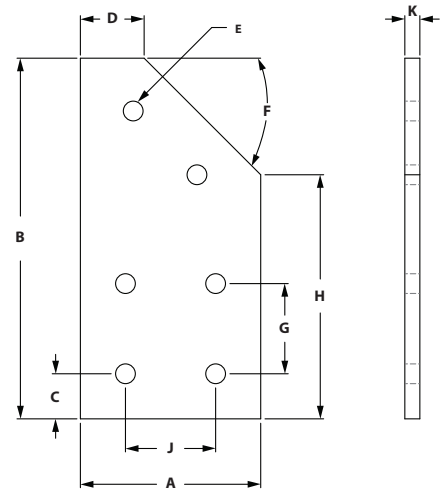


ITEM#	SERIES	FINISH	A	B	C	D	E	F	G	H	J	K
653163	15	Clear	3.000"	5.000"	.750"	1.786"	.328"	30°	1.500"	4.299"	1.500"	.250"

RECOMMENDED FASTENERS

ITEM#	SERIES	QTY	BOLT	TNUT
651129	15	6	5/16-18 x 11/16" FBHSCS	Economy

6 HOLE 45° ANGLE JOINING PLATE

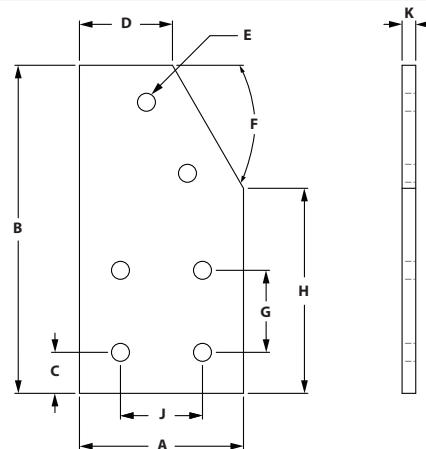


ITEM#	SERIES	FINISH	A	B	C	D	E	F	G	H	J	K
653177	15	Clear	3.000"	6.000"	.750"	1.061"	.328"	45°	1.500"	4.061"	1.500"	.250"
654177	15	Black	3.000"	6.000"	.750"	1.061"	.328"	45°	1.500"	4.061"	1.500"	.250"

RECOMMENDED FASTENERS

ITEM#	SERIES	QTY	BOLT	TNUT
651129	15	6	5/16-18 x 11/16" FBHSCS	Economy

6 HOLE 60° ANGLE JOINING PLATE

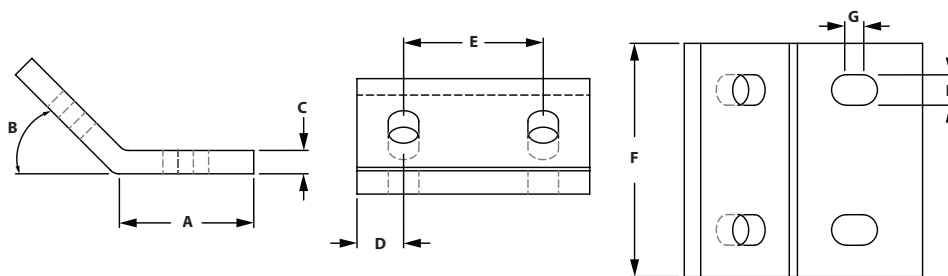


ITEM#	SERIES	FINISH	A	B	C	D	E	F	G	H	J	K
653194	15	Clear	3.000"	6.000"	.750"	1.701"	.328"	60°	1.500"	3.750"	1.500"	.250"

RECOMMENDED FASTENERS

ITEM#	SERIES	QTY	BOLT	TNUT
651129	15	6	5/16-18 x 11/16" FBHSCS	Economy

4 HOLE 45° ANGLE JOINING PLATE



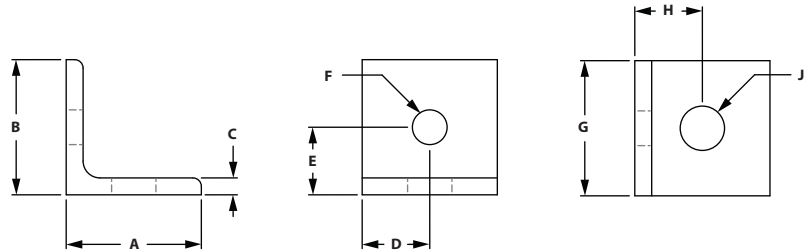
ITEM#	SERIES	FINISH	A	B	C	D	E	F	G	H
653291	15	Clear	1.340"	45°	.250"	.500"	1.500"	2.500"	.500"	.328"

RECOMMENDED FASTENERS

ITEM#	SERIES	QTY	BOLT	TNUT
651129	15	4	5/16-18 x 11/16" FBHSCS	Economy

Fractional Brackets

2 HOLE 10 TO 15 TRANSITION INSIDE CORNER BRACKET

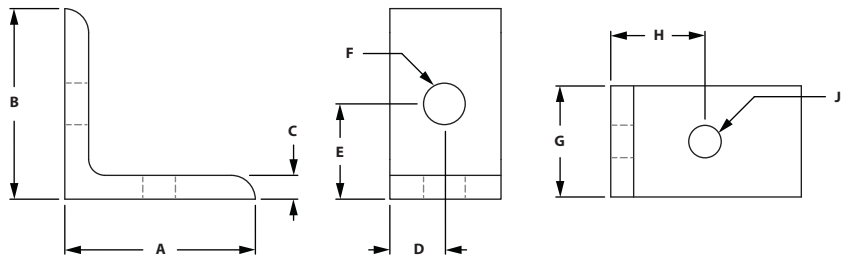


ITEM#	SERIES	FINISH	A	B	C	D	E	F	G	H	J
653272	10 to 15	Clear	1.000"	1.000"	.125"	.500"	.500"	.257"	1.000"	.500"	.328"
654272	10 to 15	Black	1.000"	1.000"	.125"	.500"	.500"	.257"	1.000"	.500"	.328"

RECOMMENDED FASTENERS

ITEM#	SERIES	QTY	BOLT	TNUT
651679	10	1	1/4-20 x 3/8" BHSCS	Economy
651191	15	1	5/16-18 x 1/2" BHSCS	Economy

2 HOLE VERTICAL 10 TO 15 TRANSITION INSIDE CORNER BRACKET

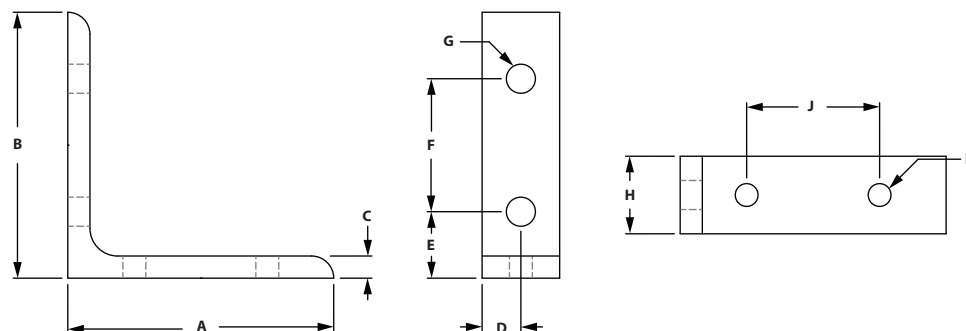


ITEM#	SERIES	FINISH	A	B	C	D	E	F	G	H	J
653268	10 to 15	Clear	1.500"	1.500"	.188"	.438"	.750"	.328"	.875"	.750"	.257"

RECOMMENDED FASTENERS

ITEM#	SERIES	QTY	BOLT	TNUT
651171	10	1	1/4-20 x 1/2" BHSCS	Economy
651150	15	1	5/16-18 x 5/8" BHSCS	Economy

4 HOLE 10 TO 15 TRANSITION INSIDE CORNER BRACKET

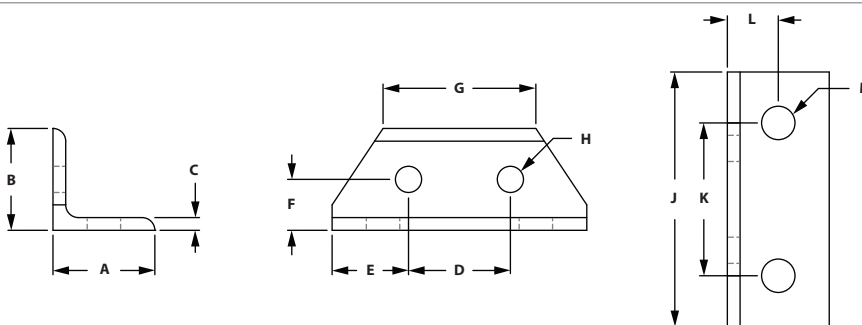


ITEM#	SERIES	FINISH	A	B	C	D	E	F	G	H	J	K
653269	15	Clear	3.000"	3.000"	.250"	.438"	.750"	1.500"	.328"	.875"	1.500"	.257"

RECOMMENDED FASTENERS

ITEM#	SERIES	QTY	BOLT	TNUT
651171	10	2	1/4-20 x 1/2" BHSCS	Economy
651129	15	2	5/16-18 x 11/16" FBHSCS	Economy

4 HOLE SMALL 10 TO 15 DOUBLE WIDE TRANSITION INSIDE CORNER BRACKET



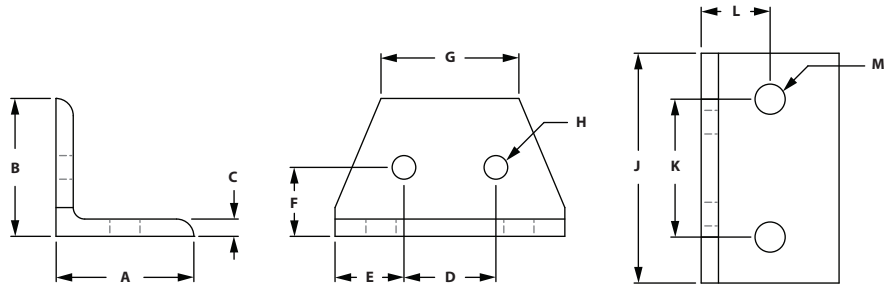
ITEM#	SERIES	FINISH	A	B	C	D	E	F	G	H	J	K	L	M
653274	10 to 15	Clear	1.000"	1.000"	.125"	1.000"	.750"	.500"	1.500"	.257"	2.500"	1.500"	.500"	.328"

RECOMMENDED FASTENERS

ITEM#	SERIES	QTY	BOLT	TNUT
651679	10	2	1/4-20 x 3/8" BHSCS	Economy
651191	15	2	5/16-18 x 1/2" BHSCS	Economy

Fractional Brackets

4 HOLE LARGE 10 TO 15 DOUBLE WIDE TRANSITION INSIDE CORNER BRACKET

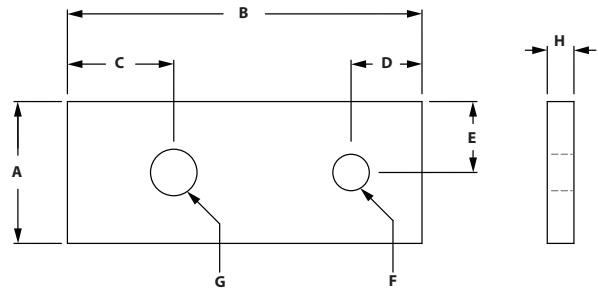


ITEM#	SERIES	FINISH	A	B	C	D	E	F	G	H	J	K	L	M
653275	10 to 15	Clear	1.500"	1.500"	.188"	1.000"	.750"	.750"	1.500"	.257"	2.500"	1.500"	.750"	.328"

RECOMMENDED FASTENERS

ITEM#	SERIES	QTY	BOLT	TNUT
651171	10	2	1/4-20 x 1/2" BHSCS	Economy
651150	15	2	5/16-18 x 5/8" BHSCS	Economy

2 HOLE TRANSITION STRIP

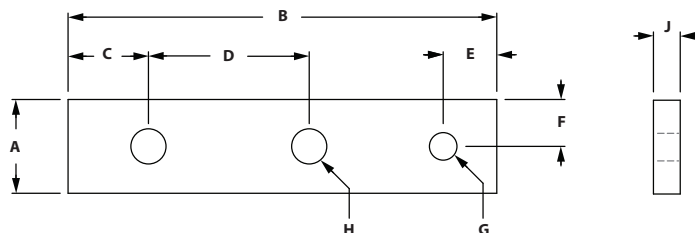


ITEM#	SERIES	FINISH	A	B	C	D	E	F	G	H
653273	10 to 15	Clear	1.000"	2.500"	.750"	.500"	.500"	.257"	.328"	.188"

RECOMMENDED FASTENERS

ITEM#	SERIES	QTY	BOLT	TNUT
651171	10	1	1/4-20 x 1/2" BHSCS	Economy
651129	15	1	5/16-18 x 11/16" FBHSCS	Economy

3 HOLE LARGE TRANSITION STRIP

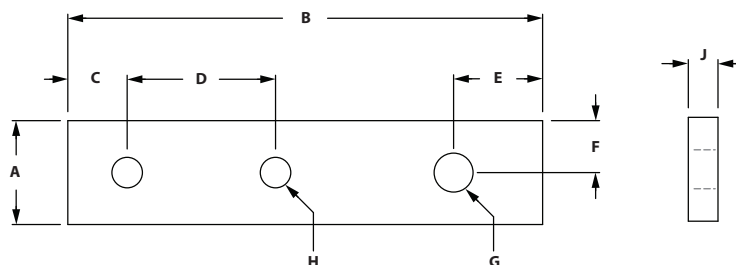


ITEM#	SERIES	FINISH	A	B	C	D	E	F	G	H	J
653270	10 to 15	Clear	.875"	4.000"	.750"	1.500"	.500"	.438"	.257"	.328"	.250"

RECOMMENDED FASTENERS

ITEM#	SERIES	QTY	BOLT	TNUT
651171	10	1	1/4-20 x 1/2" BHSCS	Economy
651129	15	2	5/16-18 x 11/16" FBHSCS	Economy

3 HOLE SMALL TRANSITION STRIP



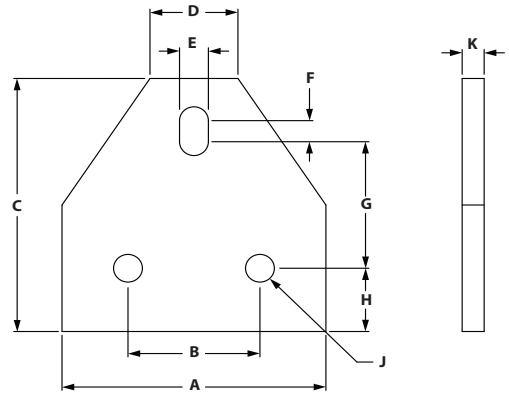
ITEM#	SERIES	FINISH	A	B	C	D	E	F	G	H	J
653271	10 to 15	Clear	.875"	4.000"	.500"	1.250"	.750"	.438"	.328"	.257"	.250"

RECOMMENDED FASTENERS

ITEM#	SERIES	QTY	BOLT	TNUT
651171	10	2	1/4-20 x 1/2" BHSCS	Economy
651129	15	1	5/16-18 x 11/16" FBHSCS	Economy

Fractional Brackets

REMOVEABLE PANEL PLATE



ITEM#	SERIES	FINISH	A	B	C	D	E	F	G	H	J	K
681443	15	Clear	3.000"	1.500"	3.000"	1.000"	.328"	.250"	1.500"	.750"	.328"	.250"

RECOMMENDED FASTENERS

ITEM#	SERIES	QTY	DESCRIPTION
651134	15	3	5/16-18 x 11/16" FBHSCS
651135	15	1	5/16-18 x 1/2" FBHSCS
651098	15	2	DBL Economy Tnut

