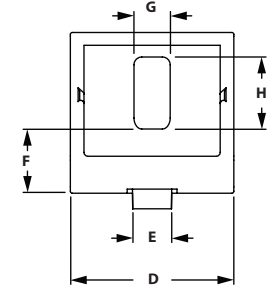
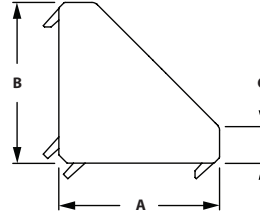
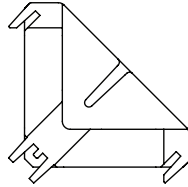


B-Series Brackets

2 HOLE CORNER GUSSETS



◦ Die-cast aluminum



ITEM#	SERIES	EXTRUSION USE	A	B	C	D	E	F	G	H
671211	20	20 mm	18.00mm	18.00mm	3.00mm	18.00mm	6.00mm	7.00mm	5.20mm	7.00mm
671213	30	30 mm	27.00mm	27.00mm	6.00mm	28.00mm	8.00mm	12.50mm	6.40mm	9.50mm
671635*	30	30 mm	27.00mm	27.00mm	6.00mm	28.00mm	8.00mm	12.50mm	6.40mm	9.50mm
671745	40	40 mm	36.00mm	36.00mm	5.50mm	38.00mm	10.00mm	9.00mm	9.00mm	20.50mm
671217	45	45 mm	41.00mm	41.00mm	9.50mm	42.00mm	10.00mm	16.50mm	9.00mm	18.50mm
671218*	45	45 mm	41.00mm	41.00mm	9.50mm	42.00mm	10.00mm	16.50mm	9.00mm	18.50mm

* Item has fastening hardware included

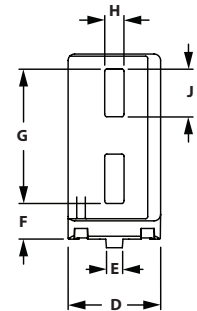
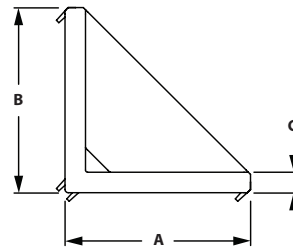
RECOMMENDED FASTENERS

ITEM#	SERIES	QTY	BOLT	TNUT
651701	20	2	M4 x 8mm SHCS	Hammer Nut
651702	30	2	M6 x 14mm SHCS	Self-Align Drop-In
651703	40	2	M8 x 20mm Hammer Head	Flange Nut
651704	45	2	M8 x 25mm Hammer Head	Flange Nut

4 HOLE CORNER GUSSET



◦ Die-cast aluminum



ITEM#	SERIES	EXTRUSION USE	A	B	C	D	E	F	G	H	J
671210	20	20 mm	38.00mm	38.00mm	3.00mm	18.00mm	6.00mm	7.00mm	26.50mm	5.2mm	9.00mm
671212	30	30 mm	57.00mm	57.00mm	5.50mm	28.00mm	8.00mm	12.00mm	39.00mm	6.40mm	11.00mm
671214	40	40 mm	76.00mm	76.00mm	8.50mm	38.00mm	10.00mm	12.00mm	56.00mm	9.00mm	20.00mm
671219	45	45 mm	86.00mm	86.00mm	9.50mm	43.00mm	10.00mm	16.50mm	62.50mm	9.00mm	22.00mm

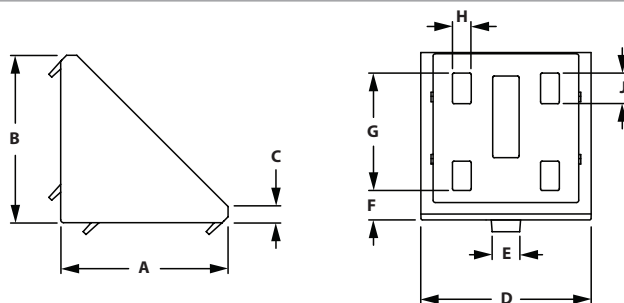
RECOMMENDED FASTENERS

ITEM#	SERIES	QTY	BOLT	TNUT
651701	20	4	M4 x 8mm SHCS	Hammer Nut
651702	30	4	M6 x 14mm SHCS	Self-Align Drop-In
651703	40	4	M8 x 25mm Hammer Head	Flange Nut
651705	45	4	M8 x 20mm Hammer Head	Self-Align Drop-In

8 HOLE CORNER GUSSET 60



- Die-cast aluminum
- Can't be used with 6060B 8 slot extrusion



ITEM#	SERIES	EXTRUSION USE	A	B	C	D	E	F	G	H	J
671220	45	60 mm	57.00mm	57.00mm	6.00mm	58.00mm	10.00mm	10.00mm	40.00mm	6.40mm	10.00mm

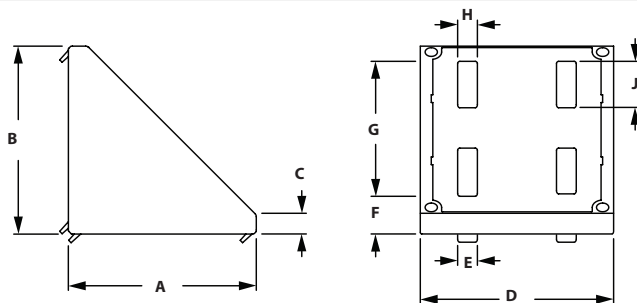
RECOMMENDED FASTENERS

ITEM#	SERIES	QTY	BOLT	TNUT
651704	45	8	M8 x 25mm Hammer Head	Flange Nut

8 HOLE CORNER GUSSET 90



- Die-cast aluminum



ITEM#	SERIES	EXTRUSION USE	A	B	C	D	E	F	G	H	J
671222	45	90 mm	86.00mm	86.00mm	10.00mm	88.00mm	10.00mm	17.00mm	61.50mm	9.00mm	21.00mm
671223*	45	90 mm	86.00mm	86.00mm	10.00mm	88.00mm	10.00mm	17.00mm	61.50mm	9.00mm	21.00mm

*Item 671223 has fastening hardware included

RECOMMENDED FASTENERS

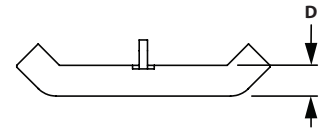
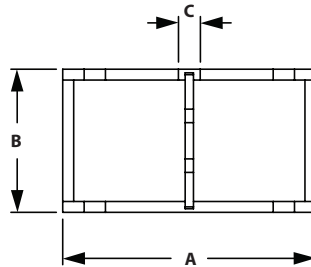
ITEM#	SERIES	QTY	BOLT	TNUT
651704	45	8	M8 x 25mm Hammer Head	Flange Nut

B-Series Brackets

COVER CAPS FOR ALU CONNECTION ANGLES



◦ Black Nylon PA

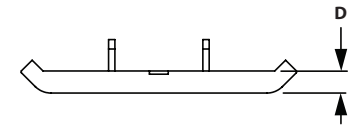
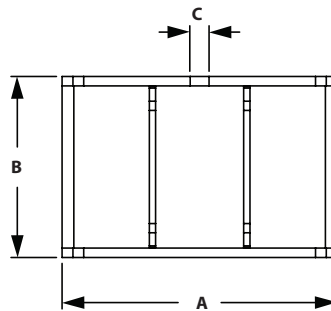


ITEM#	CAP FOR GUSSET	A	B	C	D
671224	671211	28.20mm	17.6mm	5.00mm	5.00mm
671225	671213	45.20mm	27.60mm	6.00mm	6.00mm
671227	671217 & 671218	64.00mm	39.50mm	6.00mm	4.00mm

COVER CAP FOR ALU CONNECTION ANGLE 60



◦ Black Nylon PA

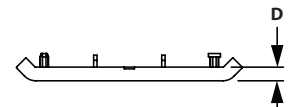
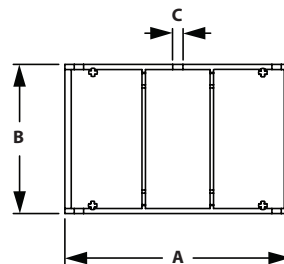


ITEM#	CAP FOR GUSSET	A	B	C	D
671228	671220	87.50mm	57.60mm	6.00mm	7.00mm

COVER CAP FOR ALU CONNECTION ANGLE 90



◦ Black Nylon PA

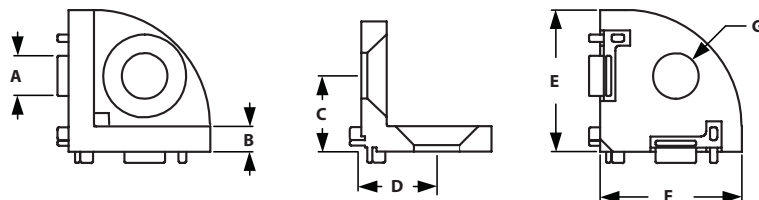


ITEM#	CAP FOR GUSSET	A	B	C	D
671229	671222 & 671223	133.00mm	87.60mm	6.00mm	7.00mm

3-WAY CONNECTION ANGLE



◦ Die-cast zinc



ITEM#	SERIES	A	B	C	D	E	F	G
671230	30	8.00mm	5.00mm	15.00mm	15.00mm	28.00mm	28.00mm	9.00mm

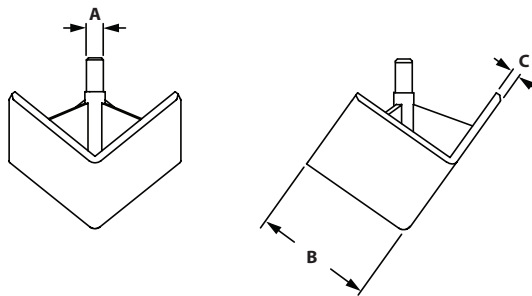
RECOMMENDED FASTENERS

ITEM#	QTY	DESCRIPTION
651518	3	M8 x 20mm FHSCS

COVER CAP FOR 3-WAY CONNECTION ANGLE



◦ Black Nylon PA

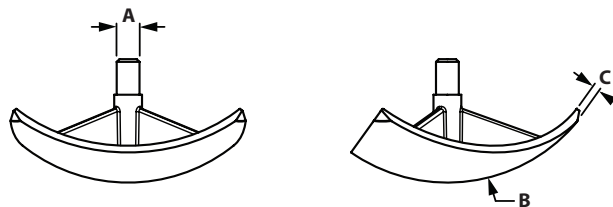


ITEM#	MATERIAL	A	B	C
671673	Black Nylon	2.30mm	20.00mm	1.00mm
671231	Black Nylon	4.20mm	30.00mm	2.00mm

COVER CAP FOR 3-WAY CONNECTION ANGLE ROUND



◦ Black Nylon PA



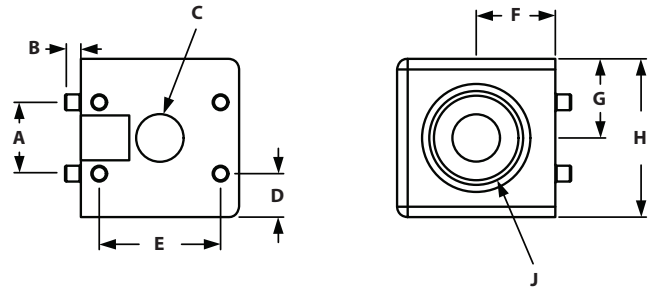
ITEM#	MATERIAL	A	B	C
671232	Black Nylon	4.20mm	R25	1.80mm

B-Series Brackets

2-WAY CORNER CONNECTOR



- Die-cast zinc
- Cover caps & Connecting hardware included



ITEM#	SERIES	A	B	C	D	E	F	G	H	J
671631	30	13.50mm	3.00mm	9.00mm	8.25mm	22.10mm	15.00mm	15.00mm	30.00mm	17.60mm
671632	45	16.00mm	4.00mm	13.00mm	14.50mm	28.50mm	22.50mm	22.50mm	45.00mm	23.70mm

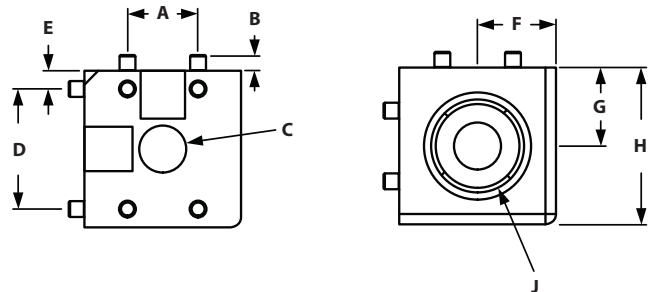
INCLUDED FASTENERS

SERIES	QTY	DESCRIPTION
30	2	S8 x 25mm FHSCS
45	2	S12 x 30mm Torx T50

3-WAY CORNER CONNECTOR



- Die-cast zinc
- Cover caps & Connecting hardware included



ITEM#	SERIES	A	B	C	D	E	F	G	H	J
671633	30	13.50mm	3.00mm	9.00mm	8.25mm	22.10mm	15.00mm	15.00mm	30.00mm	17.60mm
671634	45	16.00mm	4.00mm	13.00mm	14.50mm	28.50mm	22.50mm	22.50mm	45.00mm	23.70mm

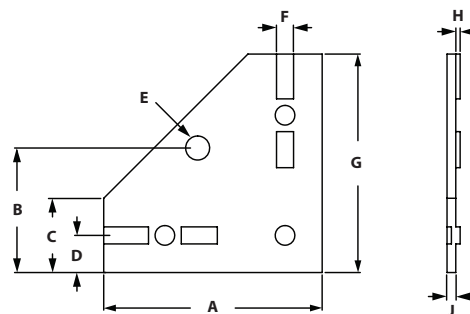
INCLUDED FASTENERS

SERIES	QTY	DESCRIPTION
30	3	S8 x 25mm FHSCS
45	3	S12 x 30mm Torx T50

4 HOLE JOINING PLATE



◦ Material: Steel



ITEM#	SERIES	A	B	C	D	E	F	G	H	J
671206	30	100.00mm	57.00mm	34.00mm	17.00mm	11.00mm	8.00mm	100.00mm	2.00mm	4.00mm
671207	45	100.00mm	57.00mm	34.00mm	17.00mm	11.00mm	10.00mm	100.00mm	2.00mm	4.00mm

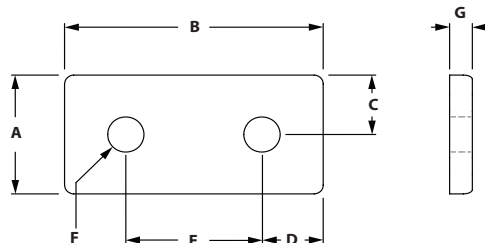
RECOMMENDED FASTENERS

ITEM#	SERIES	QTY	BOLT	TNUT
651706	30	3	M6 x 12mm BHSCS	Hammer Nut
651707	45	3	M8 x 16mm BHSCS	Hammer Nut

2 HOLE JOINING STRIP



◦ Anodized aluminum



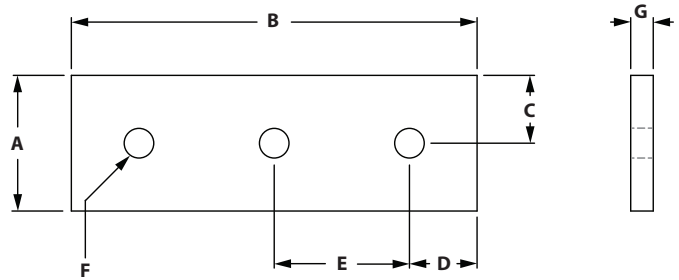
ITEM#	SERIES	EXTRUSION USE	A	B	C	D	E	F	G
671690	30	30 mm	27.00mm	57.00mm	13.50mm	13.50mm	30.00mm	7.00mm	5.00mm
671691	45	45 mm	41.00mm	86.00mm	20.50mm	20.50mm	45.00mm	9.00mm	6.00mm

RECOMMENDED FASTENERS

ITEM#	SERIES	QTY	BOLT	TNUT
651706	30	2	M6 x 12mm BHSCS	Hammer Nut
651708	45	2	M8 x 18mm BHSCS	Hammer Nut

B-Series Brackets

3 HOLE JOINING STRIP

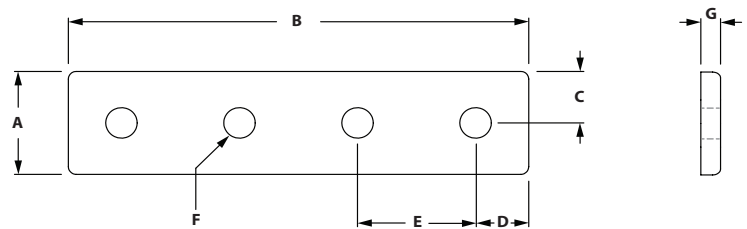


ITEM#	SERIES	EXTRUSION USE	A	B	C	D	E	F	G
699778	45	45 mm	38.10mm	129.00mm	19.05mm	19.50mm	45.00mm	8.33mm	6.35mm

RECOMMENDED FASTENERS

ITEM#	SERIES	QTY	BOLT	TNUT
651708	45	3	M8 x 18mm BHSCS	Hammer Nut

4 HOLE JOINING STRIP

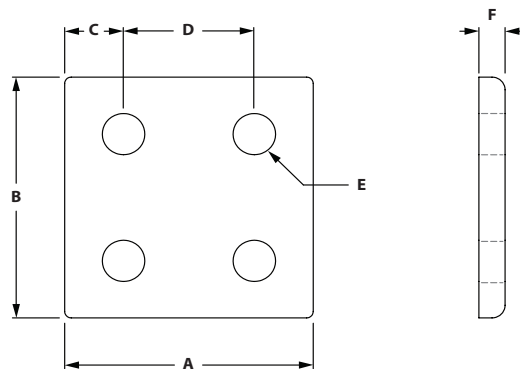


ITEM#	SERIES	EXTRUSION USE	A	B	C	D	E	F	G
671688	30	30 mm	27.00mm	117.00mm	13.50mm	13.50mm	30.00mm	7.00mm	5.00mm
671689	45	45 mm	41.00mm	176.00mm	20.50mm	20.50mm	45.00mm	9.00mm	6.00mm

RECOMMENDED FASTENERS

ITEM#	SERIES	QTY	BOLT	TNUT
651706	30	4	M6 x 12mm BHSCS	Hammer Nut
651708	45	4	M8 x 18mm BHSCS	Hammer Nut

4 HOLE JOINING PLATE

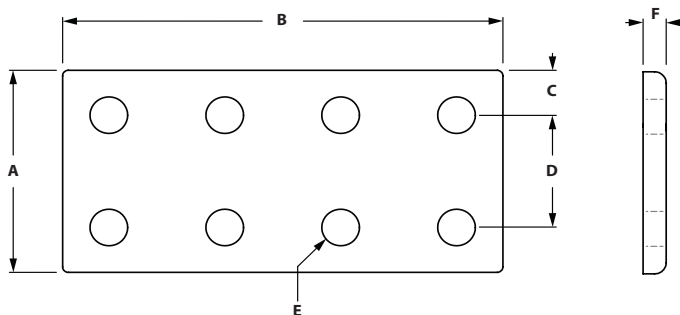


ITEM#	SERIES	EXTRUSION USE	A	B	C	D	E	F
671692	30	30 mm	57.00mm	57.00mm	13.50mm	30.00mm	7.00mm	5.00mm
671693	45	45 mm	86.00mm	86.00mm	20.50mm	45.00mm	9.00mm	6.00mm

RECOMMENDED FASTENERS

ITEM#	SERIES	QTY	BOLT	TNUT
651706	30	4	M6 x 12mm BHSCS	Hammer Nut
651708	45	4	M8 x 18mm BHSCS	Hammer Nut

8 HOLE JOINING PLATE



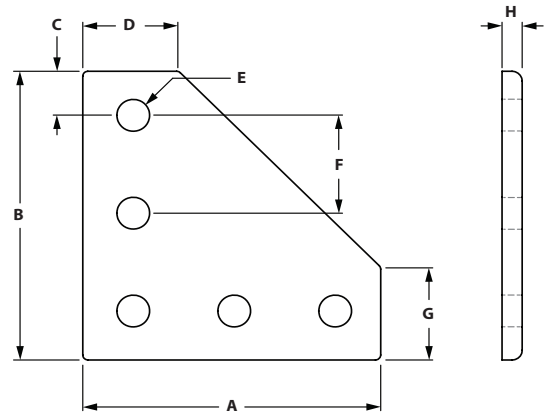
ITEM#	SERIES	EXTRUSION USE	A	B	C	D	E	F
671694	30	30 mm	57.00mm	117.00mm	13.50mm	30.00mm	7.00mm	5.00mm
671695	45	45 mm	86.00mm	176.00mm	20.50mm	45.00mm	9.00mm	6.00mm

RECOMMENDED FASTENERS

ITEM#	SERIES	QTY	BOLT	TNUT
651706	30	8	M6 x 12mm BHSCS	Hammer Nut
651708	45	8	M8 x 18mm BHSCS	Hammer Nut

B-Series Brackets

5 HOLE 90° JOINING PLATE

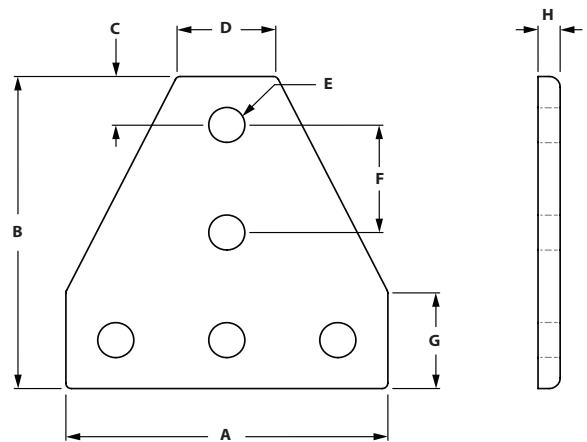


ITEM#	SERIES	EXTRUSION USE	A	B	C	D	E	F	G	H
671696	30	30 mm	88.50mm	88.50mm	14.25mm	27.00mm	7.00mm	30.00mm	27.00mm	5.00mm
671697	45	45 mm	133.00mm	133.00mm	21.50mm	41.00mm	9.00mm	45.00mm	41.00mm	6.00mm

RECOMMENDED FASTENERS

ITEM#	SERIES	QTY	BOLT	TNUT
651706	30	5	M6 x 12mm BHSCS	Hammer Nut
651708	45	5	M8 x 18mm BHSCS	Hammer Nut

5 HOLE TEE JOINING PLATE

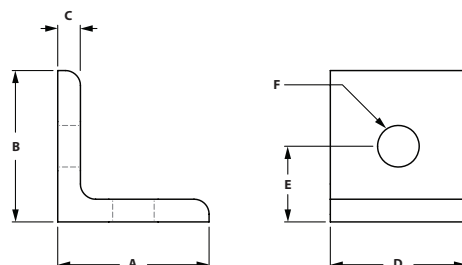


ITEM#	SERIES	EXTRUSION USE	A	B	C	D	E	F	G	H
671700	30	30 mm	87.00mm	87.00mm	13.50mm	27.00mm	7.00mm	30.00mm	27.00mm	5.00mm
671701	45	45 mm	131.00mm	131.00mm	20.50mm	41.00mm	9.00mm	45.00mm	41.00mm	6.00mm

RECOMMENDED FASTENERS

ITEM#	SERIES	QTY	BOLT	TNUT
651706	30	5	M6 x 12mm BHSCS	Hammer Nut
651708	45	5	M8 x 18mm BHSCS	Hammer Nut

2 HOLE CORNER BRACKET

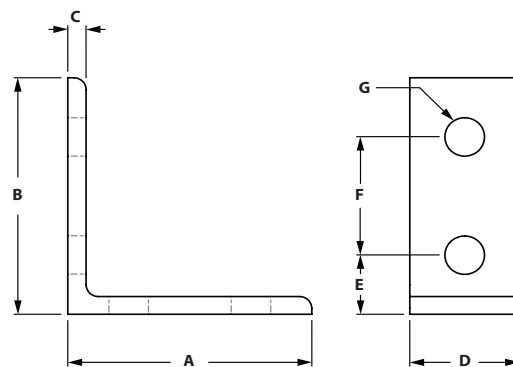


ITEM#	SERIES	EXTRUSION USE	A	B	C	D	E	F
671706	30	30 mm	30.00mm	30.00mm	5.00mm	30.00mm	15.00mm	7.00mm
671707	45	45 mm	45.00mm	45.00mm	6.00mm	41.00mm	22.50mm	9.00mm

RECOMMENDED FASTENERS

ITEM#	SERIES	QTY	BOLT	TNUT
651706	30	2	M6 x 12mm BHSCS	Hammer Nut
651708	45	2	M8 x 18mm BHSCS	Hammer Nut

4 HOLE VERTICAL CORNER BRACKET



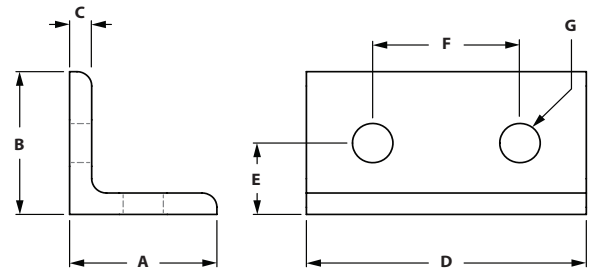
ITEM#	SERIES	EXTRUSION USE	A	B	C	D	E	F	G
671708	30	30 mm	60.00mm	60.00mm	5.00mm	27.00mm	15.00mm	30.00mm	7.00mm
671709	45	45 mm	90.00mm	90.00mm	6.00mm	41.00mm	22.50mm	45.00mm	9.00mm

RECOMMENDED FASTENERS

ITEM#	SERIES	QTY	BOLT	TNUT
651706	30	4	M6 x 12mm BHSCS	Hammer Nut
651708	45	4	M8 x 18mm BHSCS	Hammer Nut

B-Series Brackets

4 HOLE HORIZONTAL CORNER BRACKET

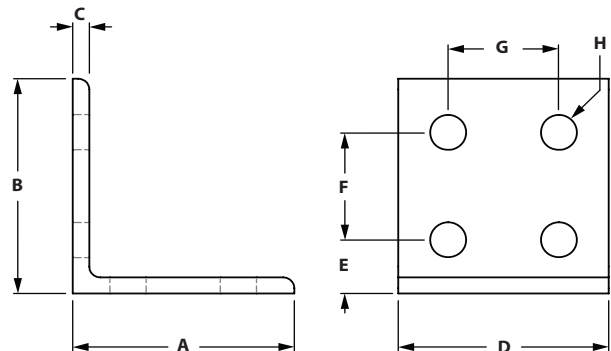


ITEM#	SERIES	EXTRUSION USE	A	B	C	D	E	F	G
671710	30	30 mm	30.00mm	30.00mm	5.00mm	57.00mm	15.00mm	30.00mm	7.00mm
671711	45	45 mm	45.00mm	45.00mm	6.00mm	86.00mm	22.50mm	45.00mm	9.00mm

RECOMMENDED FASTENERS

ITEM#	SERIES	QTY	BOLT	TNUT
651706	30	4	M6 x 12mm BHSCS	Hammer Nut
651708	45	4	M8 x 18mm BHSCS	Hammer Nut

8 HOLE VERTICAL CORNER BRACKET



ITEM#	SERIES	EXTRUSION USE	A	B	C	D	E	F	G	H
671712	30	30 mm	60.00mm	60.00mm	5.00mm	57.00mm	15.00mm	30.00mm	30.00mm	7.00mm
671713	45	45 mm	90.00mm	90.00mm	6.00mm	86.00mm	22.50mm	45.00mm	45.00mm	9.00mm

RECOMMENDED FASTENERS

ITEM#	SERIES	QTY	BOLT	TNUT
651706	30	8	M6 x 12mm BHSCS	Hammer Nut
651708	45	8	M8 x 18mm BHSCS	Hammer Nut